

MAHATMA
玛哈特

全球高端矫平设备领导品牌
The world's leading brand of high-end leveling equipment

几秒 矫平各种金属板材

专业矫平

玛哈特集团
MAHATMA GROUP

☎ **400-0898-858**

☎ 0769-8630 1265 ✉ mht@gddys.com

🌐 www.mahatma.com.cn

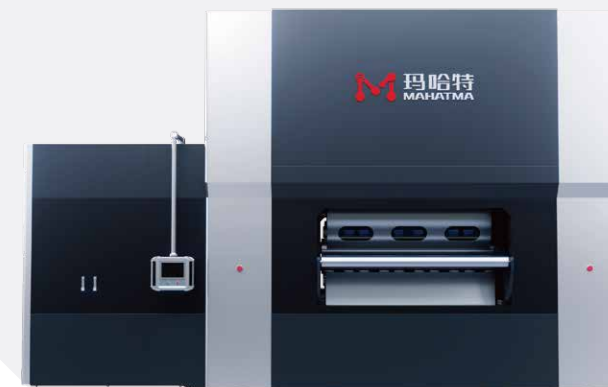
📍 广东省东莞市石碣镇西南嘉应一街3号玛哈特工业园
MAHATMA Industrial Park, No. 3, Jiaying 1st Street, Shijie Town, Dongguan City, Guangdong Province

📍 江西省抚州市高新区大觉山路玛哈特工业园
MAHATMA Industrial Park, Dajue Road, High-tech Zone, Fuzhou City, Jiangxi Province

📍 香港九龙尖沙咀柯士甸路7-9号焕利商业大厦7楼63室
Room 63, 7/F, Woon Lee Commercial Building, 7-9 Austin Ave, Tsim Sha Tsui, Kowloon, Hong Kong



公众号二维码
Official Account



集团介绍

Group Introduction



MAHATMA

玛哈特全球智能制造中心

MAHATMA global Intelligent manufacturing center

位于江西抚州国家高新技术开发区，一期占地20000m²，二期占地30000m²，员工200+；研发专家20+。我们拥有先进的生产设施和设备，注重自动化和智能化应用，坚持投资和改进，以提高生产效率和产品质量。

致力于技术进步和创新，为客户提供最优质的产品和服务。



Located in Fuzhou National High tech Development Zone, Jiangxi Province, the first phase covers an area of 20000 square meters and the second phase covers an area of 30000 square meters, with over 200 employees; More than 20 R&D experts. We have advanced production facilities and equipment, focus on automation and intelligent applications, adhere to investment and improvement, to improve production efficiency and product quality.

Dedicated to technological progress and innovation, providing customers with the highest quality products and services.

集团简介

Group profile

玛哈特以助力智能制造国产替代与产业升级为使命，自2003年成立以来，在矫平机、自动化产线、智慧系统及配套搭载设备等前沿创新领域，不断地革新技术产品与解决方案。

是一家集研发、生产、销售、服务四位一体的钣金零件矫平智造解决方案服务商。是具有全球竞争力的国际高端矫平设备制造领导品牌，同时也是国家高新技术及专精特新企业。

玛哈特作为智慧超级矫平技术设备的品类开创者，实现了从低端到高端矫平设备的全品类覆盖，且二十余年的行业积累与技术创新，我们的制造工艺与矫平精度均已达到国际最先进水平。

MAHATMA mission is to assist in the domestic substitution and industrial upgrading of intelligent manufacturing. Since its establishment in 2003, it has continuously innovated its technological products and solutions in cutting-edge innovation fields such as leveling machines, automated production lines, smart systems, and supporting equipment.

We are a sheet metal parts straightening intelligent manufacturing solution service provider that integrates research and development, production, sales, and service. It is a leading international high-end leveling equipment intelligent manufacturing brand with global competitiveness, as well as a national high-tech and specialized new enterprise.

As the pioneer of intelligent super leveling technology equipment, MAHATMA has achieved full category coverage of leveling equipment from low-end to high-end. With more than 20 years of industry accumulation and technological innovation, our manufacturing process and leveling accuracy have reached the most advanced international level.

2003年

公司成立
Found

15000+

客户案例
Cases

50000m²

生产基地
Plants

10家

分公司
Branches

350+

公司员工
Employee

20000m²

研发中心
R&D Center

玛哈特全球研发实验中心

MAHATMA global R&D center

位于东莞，占地约20000m²，员工150+，研发专家30+。我们集设计、研发、代工、销售、展厅于一体，投入巨大资源和人力，聚集行业顶尖专家和科学家，致力于智慧超矫技术的应用和发展。并携手清华大学等国内外顶尖高校合作打造产学研基地，继续探索技术前沿，开发高效、精准、安全、节能的超矫技术，为产业升级制造做出贡献。

创新方法和工具。我们将致力于开发高效、精准、安全、节能的超矫技术，应用于钣金、工业、交通、能源等多个领域，为人类社会的可持续发展做出贡献。

Located in Dongguan, covering an area of approximately 15000 square meters, with over 150 employees and 30 research and development experts. We Integrating design, research and development, OEM, sales, and exhibition halls, investing huge resources and manpower, Gathering top-notch experts and scientists in the industry, dedicated to the application and development of intelligent super correction technology. And collaborate with top domestic and foreign universities such as Tsinghua University to build industry university research bases, continuing to explore At the forefront of technology, we aim to develop efficient, precise, safe, and energy-saving super straightening technologies for industrial upgrading Make contributions to manufacturing.

Innovative methods and tools. We will be committed to developing efficient, precise, safe, and energy-saving super straightening technologies, which will be applied in multiple fields such as sheet metal, industry, transportation, and energy Domain contributes to the sustainable development of human society.

■ 什么是辊式矫平

What is leveling

辊式矫平是获得高精度平整零件、板材或带料的一种简单快速的加工方法。比如，在过去，矫平只能靠富有经验的老工人进行。而对于辊式矫平，任何人都能快速方便地掌握加工方法。

采用辊式矫平时，一块板材将先后经过连续多次的交变弯曲。从辊式矫平机的入口至出口，交错排列着各组矫平辊。这样，在两个相对的矫平辊中始终有一个辊为下压辊。从第一个矫平辊至出口处，交变弯曲程度逐步减弱。弯曲过程类似一个逐步减弱的正弦曲线。通过弹塑性交错弯曲和不断减弱的变形量，板材将变得平整，更重要的是消除了应力并最终将其矫平！

矫平后直接进行后续加工，无需再费时费力的返工。所以说辊式矫平就是把材料本身内应力释放达到平面度的一个过程！简称“消除内应力，矫平平面度！”

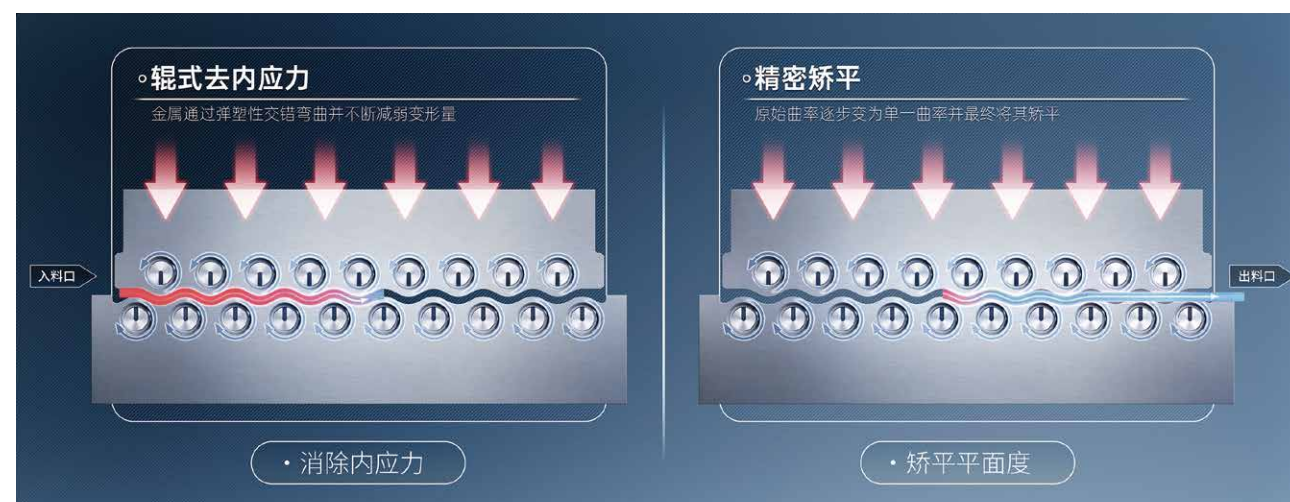
Roller leveling is a simple and fast processing method for obtaining high-precision flat parts, plates, or strips. For example, in the past, leveling could only be carried out by experienced and experienced workers. For roller leveling, anyone can quickly and conveniently master the processing method.

By using roller leveling, a plate will undergo multiple consecutive alternating bends. From the inlet to the outlet of the roller leveler, each group of leveling rollers is arranged in a staggered manner. In this way, there is always one roller in the two opposite leveling rollers that is the down pressing roller. From the first leveling roller to the outlet, the alternating bending degree gradually weakens. The bending process is similar to a gradually weakening Sine wave. Through elastic-plastic staggered bending and continuously decreasing deformation, the sheet will become flat, and more importantly, stress is eliminated and ultimately leveled!

After leveling, direct subsequent processing is carried out without the need for time-consuming and laborious rework. So roller leveling is a process of releasing the internal stress of the material itself to flatness! Abbreviated as "eliminating internal stress, leveling flatness!"

“只有致力于创新的人才会真正地发现矫平技术的未来”

"Only those committed to innovation will truly discover the future of leveling technology."

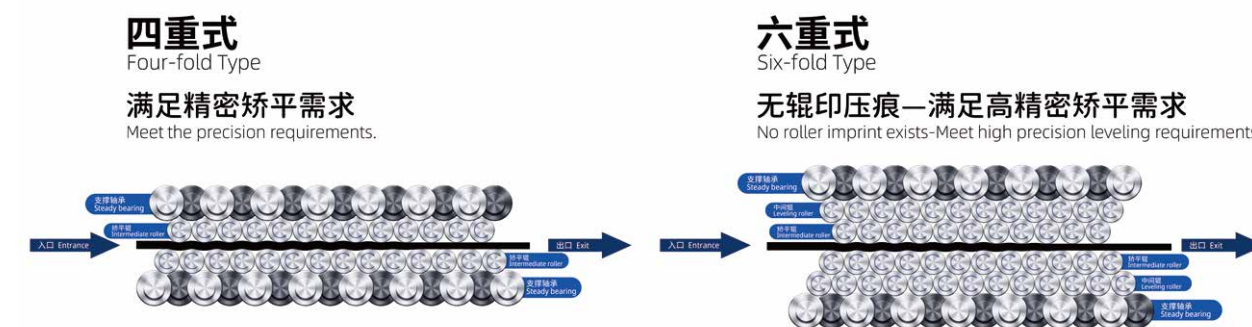


■ 结构介绍

Structure introduction

辊式矫平有二重、四重、六重结构，随着重数的增加，矫平效果也更加精密，中间辊加上下支撑保证辊的不可压缩性，完美的降低了上下矫平辊之间的空白空隙，利用材料的“包辛格效应”对板材多次反复弯曲，变弯曲的强度往出口处逐渐减小，随着矫平辊的数量增多，交变弯曲次数也同样增加使多种原始曲率逐步变为单一曲率，并最终将其矫平，达到工艺要求的平整精度。

The roll leveling has a double, four and six structure. With the increase of the weight, the leveling effect is more precise. The middle roll and the lower support ensure the Incompressibility of the roll, which perfectly reduces the gap between the upper and lower leveling rolls. The plate is repeatedly bent by using the "Bauschinger effect" of the material, and the bending strength gradually decreases toward the exit. With the increase of the number of leveling rolls, The number of alternating bends also increases, gradually transforming various original curvatures into a single curvature, and ultimately leveling them to achieve the required flatness accuracy in the process.



四/六重式辊(原理图)
Four/six-fold rollers (principle diagram)

四重式性能与特点

Performances and features of Four layers type

- 校平辊受力分布均匀
 - 结构刚性好，变形小，校平精度高
 - 校平板表面校好，传动平稳，噪音低
 - 适用于碳钢板，不锈钢板
- Uniform force distribution of leveling rollers
 - Good structure rigidity, small deformation, high leveling accuracy
 - The surface quality of leveling plate is good, the transmission is stable, and the noise is low

六重式性能与特点

Performances and features of Six Layers type

- 校平辊受力分布均匀、排泄杂物
 - 结构刚性好，变形小，校平精度高
 - 校平板表面质量好，传动平稳，噪音低，无辊压痕
 - 单面分三层辊:支撑轴承，中间辊，矫平辊
 - 适用于铜板，铝板，不锈钢板等表面要求高的金属材料
- Uniform force distribution of leveling rollers
 - Good structure rigidity, small deformation, high leveling accuracy
 - The surface quality of the leveling plate is good, the transmission is stable, the noise is low, and there is no roller indentation
 - Single-sided three-layer roller: support bearing, intermediate

产品体系

Product Series

矫平天下不平事

Let things go back right way

用全新智慧超矫技术重构工业机械制造相关行业

Reconstructing industrial machinery manufacturing-related industries with new smart super-correction technology

御 Royal 尊贵型

伺服液压高精度矫平系列

Servo hydraulic high precision leveling machine series



悟 Wits 旗舰型

高端智慧数控超矫系列

Intelligent Servo-CNC Leveling machine series



慧 Mastery 豪华型

智慧数控精密矫平系列

Intelligent CNC Leveling machine series



渺 Vague 基础型

二四重普通矫平系列

Two/four layers leveling machine series



自动化智慧工厂

Automated smart factory

自动化智慧工厂是矫平自动化智能制造的一站式解决方案，是一个集成了自动化技术、信息技术、人工智能和物联网技术的现代化生产线，我们可以提供从设计、集成到实施的全套服务，帮助企业构建高效、灵活的智能生产线，实现从原材料到成品的无缝连接。该解决方案涵盖了从自动开卷矫平送料、自动剪切和冲压、激光下料、自动收料和上料、去毛料、精密矫平与自动检测平面度、自动折弯、焊接和装配、喷涂到智能监控和维护等各个环节，通过智能数字化工厂实现生产过程的优化和决策支持，进而达到提高生产效率、降低成本、提升产品质量等目的，是现代工业对于智能制造和工业4.0的理想选择。

The automated smart factory is a one-stop solution for leveling automated smart manufacturing. It is a modern production line that integrates automation technology, information technology, artificial intelligence and Internet of Things technology. We can provide a full set of services from design, integration to implementation to help Enterprises build efficient and flexible intelligent production lines to achieve seamless connections from raw materials to finished products. The solution covers everything from automatic uncoiling, leveling and feeding, automatic shearing and stamping, laser blanking, automatic collecting and loading, wool removal, precision leveling and automatic flatness detection, automatic bending, welding and assembly, spraying. In all aspects, including intelligent monitoring and maintenance, the optimization of the production process and decision support can be achieved through intelligent digital factories, thereby improving production efficiency, reducing costs, and improving product quality. It is an ideal choice for modern industry for intelligent manufacturing and Industry 4.0.



高精度自动开卷矫平冲压线

High-precision automatic uncoiling, leveling and stamping line



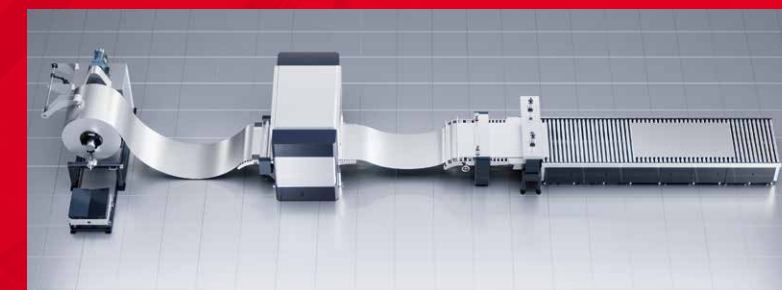
自动矫平检测线

Automatic detection line



激光卷料落料线

Laser coil blanking line



高精度自动开卷矫平剪切线

High-precision automatic uncoiling, leveling and shearing line



自动平面度检测仪

Automatic flatness detector



矫平去毛刺自动化生产线

Leveling and deburring automated production line



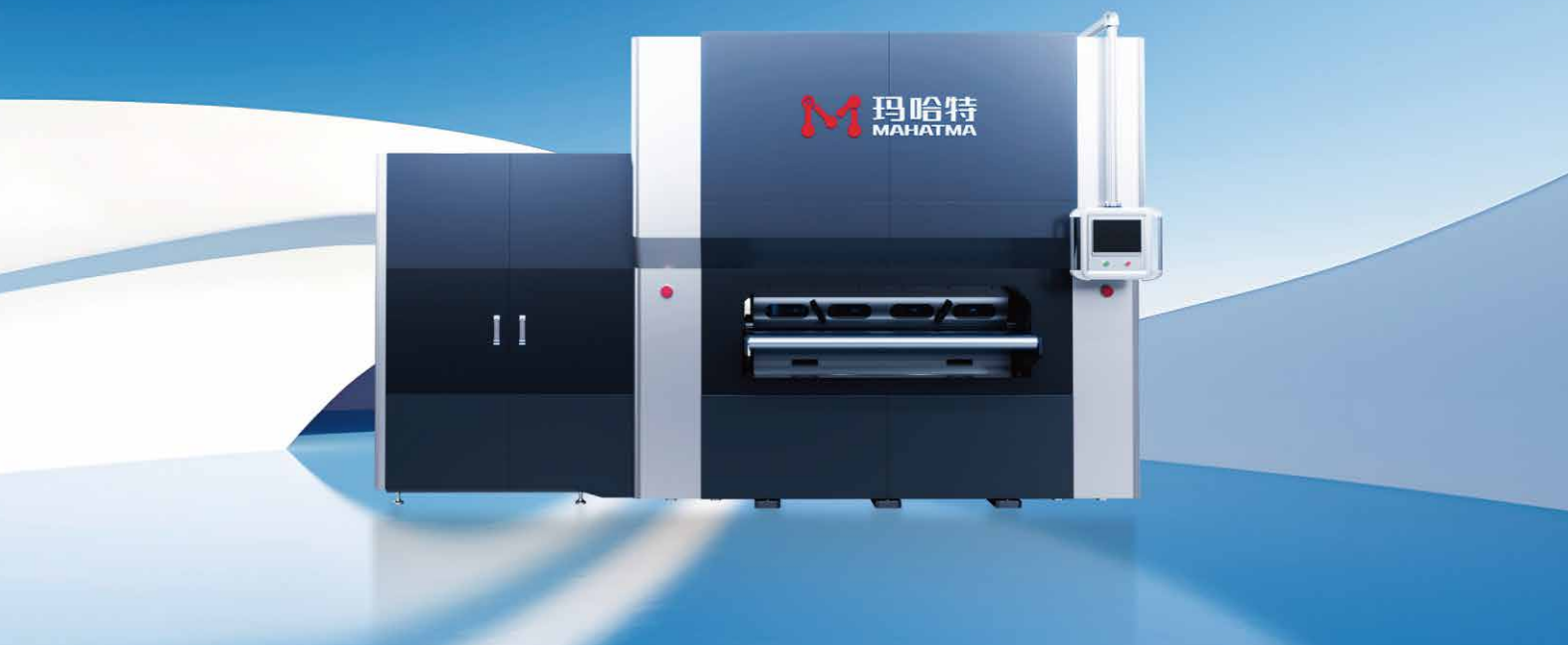
全自动成型线

(含上料、矫平、送料、剪切、折弯、焊接等)

high-precision uncoiling, leveling, feeding, shearing, bending and welding

御Royal 尊贵型 伺服液压高精密矫平系列

ROYAL (Honorable style): Servo hydraulic high precision leveling machine series



该系列机型采用德国进口液压和数控技术，结合了伺服控制系统的精确性和液压系统的强大力量。使其在处理大型厚型及高精度要求的材料矫平方面表现更出色！保持恒定的矫正辊间隙，减少变形，保证稳定矫正效果。平行多辊、液压锁紧和密集支撑技术满足高精密矫平需求。紧凑设计，占地小，高加工精度，静音运转。与进口设备媲美，低成本且反应快。快速准确监测部件平整度，精度微米级。

适用于大型厚板钢板、有色金属、镜面板料、钣金、激光切割件和火焰切割件的精细表面要求四重或六重组辊结构提供均匀辊受力和高刚性，不留下辊压痕迹，可解决一般矫平难以解决的问题，适用性更广。液压矫平机的这些优势使其成为新能源、军工、重型机械、汽车卡车、建筑、船舶、航空、金属加工等要求高精度矫平的行业的理想选择。

The series of models adopts hydraulic and CNC technology imported from Germany, combining the accuracy of the servo control system and the powerful power of the hydraulic system. This makes it perform even better in processing large, thick and high-precision material leveling! Maintain a constant correction roller gap to reduce deformation and ensure stable correction effects. Parallel multi-rollers, hydraulic locking and dense support technology meet high-precision leveling needs. Compact design, small footprint, high processing accuracy, and silent operation. Comparable with imported equipment, low cost and quick response. Quickly and accurately monitor component flatness with micron-level accuracy.

Suitable for fine surface requirements of large thick steel plates, non-ferrous metals, mirror sheets, sheet metal, laser cutting parts and flame cutting parts. The quadruple or sixfold roller structure provides uniform roller force and high rigidity without leaving any rolling marks. , can solve problems that are difficult to solve with general leveling, and has wider applicability. These advantages of hydraulic levelers make them an ideal choice for industries that require high-precision leveling, such as new energy, military industry, heavy machinery, automobiles and trucks, construction, ships, aviation, and metal processing.

尖端性能	最大矫平宽度6m、最大矫平厚度100mm，最高精度可达0.01mm
榫卯机身	全包围机身，承载力超强，节省空间，全面提升稳定性与刚性；杜绝变形，稳定耐用
颠覆传统	伺服与液压混合驱动，精准的力量控制与定位，高力矩和压力，精细可控，快速响应
智慧标杆	新一代智慧超矫控制系统；全自动无人化、实时监控和调整，远程控制、自动计数等
合金辊组	密布式排列全支撑结构，增强刚性，提高精度，合金钢构造，提供长效稳定的工作性能
强劲动力	液压结构，拥有强大而又均匀的矫平力量，能够轻松应对各种高品质金属材料的矫平需求
节能环保	与传统液压相比，节省70%能耗，绿色环保，减少材料损耗，提高生产效率，且维护成本更低
兼容性强	能适应制造业各种场景，可以处理从薄到厚，从软到硬的各种材料，具有超高的适用性
防塌角功能	采用动态伺服液压补偿技术，预防塌角，提高矫平精度和材料的表面质量

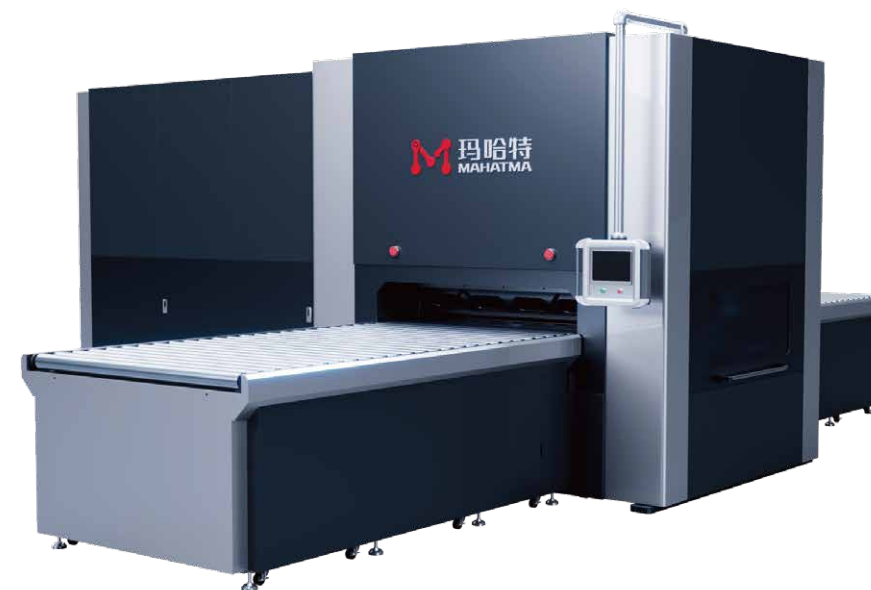
Peak performance	The maximum leveling width is 6m, the maximum leveling thickness is 100mm, and the maximum accuracy can reach 0.01mm;
Mortise and tenon fuselage	Fully encircling the fuselage, it has super load-bearing capacity, saves space, and comprehensively improves stability and rigidity; it eliminates deformation and is stable and durable.
Subvert tradition	Servo and hydraulic hybrid drive, precise force control and positioning, high torque and pressure, fine controllability, quick response;
Smart Benchmark	A new generation of intelligent super-correction control system; fully automatic and unmanned, real-time monitoring and adjustment, remote control, automatic counting, etc;
Alloy roller set	Densely arranged full support structure enhances rigidity and improves precision. Alloy steel structure provides long-term and stable working performance;
Strong power	The hydraulic structure has strong and uniform leveling force, which can easily cope with the leveling needs of various high-quality metal materials;
Energy saving and environmental protection	Compared with traditional hydraulics, it saves 70% energy consumption, is green and environmentally friendly, reduces material loss, improves production efficiency, and has lower maintenance costs;
Strong compatibility	It can adapt to various scenarios in the manufacturing industry and can handle various materials from thin to thick, from soft to hard, with ultra-high applicability;
Anti-sag function	Dynamic servo hydraulic compensation technology is used to prevent angle collapse and improve leveling accuracy and material surface quality.

御Royal 尊贵型 伺服液压高精密矫平系列

ROYAL (Honorable style): Servo hydraulic high precision leveling machine series



■ 整平前后对比图
Comparison chart before and after leveling



■ 整平前后对比图
Comparison chart before and after leveling



■ MHTY30系列(Series)

厚度(Thickness): 0.5-3.0mm

机 型 Model	MHTY30-600-23	MHTY30-1000-23	MHTY30-1300-23	MHTY30-1600-23	MHTY30-2100-23
宽 度 Width	0-600mm	0-1000mm	0-1300mm	0-1600mm	0-2100mm
辊 径 Roll diameter	30	30	30	30	30
额定厚度 Rated thickness	0.5-3.0mm	0.5-3.0mm	0.5-3.0mm	0.5-3.0mm	0.5-3.0mm
最大厚度 Maximum thickness	5.0mm	5.0mm	5.0mm	5.0mm	5.0mm
辊 数 Number of rolls	23	23	23	23	23
最短工件 Shortest part	60	60	60	60	60
矫平速度 Leveling speed	0-10m/min	0-10m/min	0-10m/min	0-10m/min	0-10m/min
电 压 Voltage	AC三相380VAC 3-phase 380V	AC三相380VAC 3-phase 380V	AC三相380VAC 3-phase 380V	AC三相380VAC 3-phase 380V	AC三相380VAC 3-phase 380V
选 配 Optional	<ul style="list-style-type: none"> 四/六重式辊以及辊数数量 Four and six-fold rollers and number of rollers 进出料流水线 Inlet and outflow assembly line 		<ul style="list-style-type: none"> 上下料取料机械手 Loading and unloading manipulator 支撑轮独立调节 The support roller is adjusted by motor independently 		<ul style="list-style-type: none"> 上下料取料机器人 Loading and unloading robot 自动检测平台 Automatic detection platform
<p>更大、特殊尺寸、更快速度可按需求订制 Larger, special size, faster speed can be customized according to demand</p>					

*设备参数根据材质(Material)Q235/屈服强度(Yield strength)235MPa计算。

■ MHTY40系列(Series)

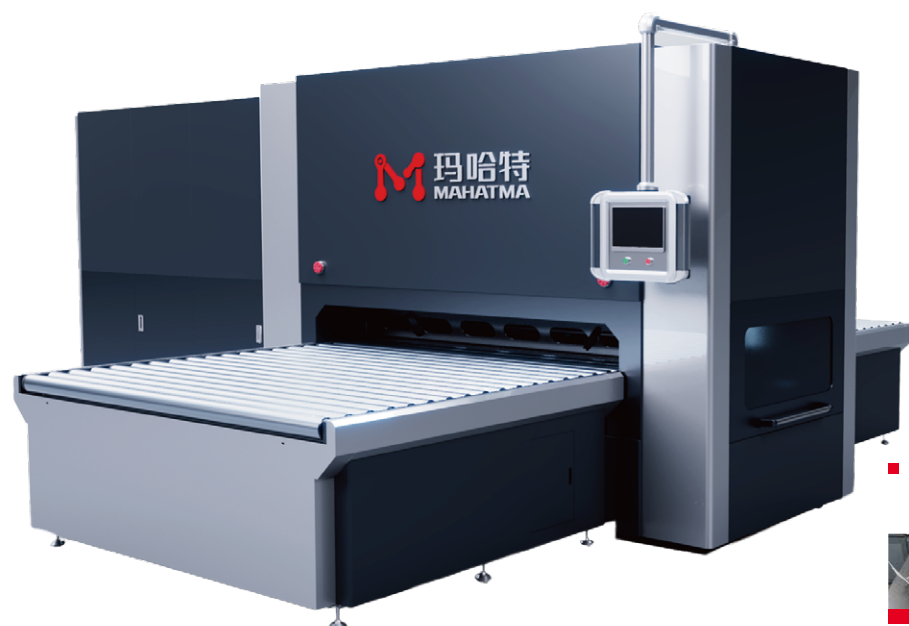
厚度(Thickness): 0.6-4.0mm

机 型 Model	MHTY40-600-23	MHTY40-1000-23	MHTY40-1300-23	MHTY40-1600-23	MHTY40-2100-23	MHTY40-2600-23
宽 度 Width	0-600mm	0-1000mm	0-1300mm	0-1600mm	0-2100mm	0-2600mm
辊 径 Roll diameter	40	40	40	40	40	40
额定厚度 Rated thickness	0.6-4.0mm	0.6-4.0mm	0.6-4.0mm	0.6-4.0mm	0.6-4.0mm	0.6-4.0mm
最大厚度 Maximum thickness	8.0mm	8.0mm	8.0mm	8.0mm	8.0mm	8.0mm
辊 数 Number of rolls	23	23	23	23	23	23
最短工件 Shortest part	80	80	80	80	80	80
矫平速度 Leveling speed	0-10m/min	0-10m/min	0-10m/min	0-10m/min	0-10m/min	0-10m/min
电 压 Voltage	AC三相380VAC 3-phase 380V	AC三相380VAC 3-phase 380V	AC三相380VAC 3-phase 380V	AC三相380VAC 3-phase 380V	AC三相380VAC 3-phase 380V	AC三相380VAC 3-phase 380V
选 配 Optional	<ul style="list-style-type: none"> 四/六重式辊以及辊数数量 Four and six-fold rollers and number of rollers 进出料流水线 Inlet and outflow assembly line 		<ul style="list-style-type: none"> 上下料取料机械手 Loading and unloading manipulator 支撑轮独立调节 The support roller is adjusted by motor independently 		<ul style="list-style-type: none"> 上下料取料机器人 Loading and unloading robot 自动检测平台 Automatic detection platform 	
<p>更大、特殊尺寸、更快速度可按需求订制 Larger, special size, faster speed can be customized according to demand</p>						

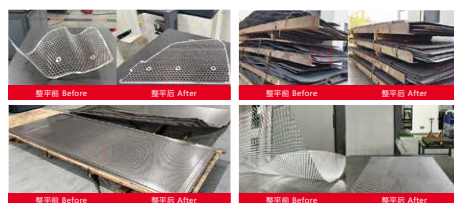
*设备参数根据材质(Material)Q235/屈服强度(Yield strength)235MPa计算。

御Royal 尊贵型 伺服液压高精密矫平系列

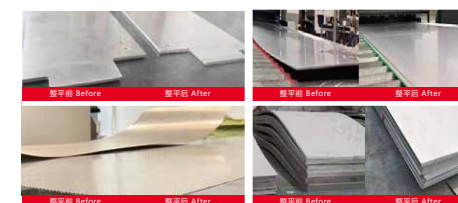
ROYAL (Honorable style): Servo hydraulic high precision leveling machine series



■ 整平前后对比图
Comparison chart before and after leveling



■ 整平前后对比图
Comparison chart before and after leveling



■ MHTY50系列(Series)

厚度(Thickness): 0.8-5.0mm

机 型 Model	MHTY50-600	MHTY50-1000	MHTY50-1300	MHTY50-1700	MHTY50-2100	MHTY50-2600
宽 度 Width	0-600mm	0-1000mm	0-1300mm	0-1700mm	0-2100mm	0-2600mm
辊 径 Roll diameter	50	50	50	50	50	50
额 定 厚 度 Rated thickness	0.8-5.0mm	0.8-5.0mm	0.8-5.0mm	0.8-5.0mm	0.8-5.0mm	0.8-5.0mm
最 大 厚 度 Maximum thickness	10.0mm	10.0mm	10.0mm	10.0mm	10.0mm	10.0mm
辊 数 Number of rolls	23	23	23	23	23	23
最 短 工 件 Shortest part	100	100	100	100	100	100
矫 平 速 度 Leveling speed	0-10m/min	0-10m/min	0-10m/min	0-10m/min	0-10m/min	0-10m/min
电 压 Voltage	AC三相380VAC 3-phase 380V	AC三相380VAC 3-phase 380V	AC三相380VAC 3-phase 380V	AC三相380VAC 3-phase 380V	AC三相380VAC 3-phase 380V	AC三相380VAC 3-phase 380V
选 配 Optional	<ul style="list-style-type: none"> 四/六重式辊以及辊数数量 Four and six-fold rollers and number of rollers 进出料流水线 Inlet and outflow assembly line 		<ul style="list-style-type: none"> 上下料取料机械手 Loading and unloading manipulator 支撑轮独立调节 The support roller is adjusted by motor independently 		<ul style="list-style-type: none"> 上下料取料机器人 Loading and unloading robot 自动检测平台 Automatic detection platform 	
<p>更大、特殊尺寸、更快速度可按需求订制 Larger, special size, faster speed can be customized according to demand</p>						

*设备参数根据材质(Material)Q235/屈服强度(Yield strength)235MPa计算。

■ MHTY60系列(Series)

厚度(Thickness): 1.0-8.0mm

机 型 Model	MHTY60-600	MHTY60-1000	MHTY60-1400	MHTY60-1650	MHTY60-2100	MHTY60-2600	MHTY60-3200
宽 度 Width	0-600mm	0-1000mm	0-1400mm	0-1650mm	0-2100mm	0-2600mm	0-3200mm
辊 径 Roll diameter	60	60	60	60	60	60	60
额 定 厚 度 Rated thickness	1.0-8.0mm	1.0-8.0mm	1.0-8.0mm	1.0-8.0mm	1.0-8.0mm	1.0-8.0mm	1.0-8.0mm
最 大 厚 度 Maximum thickness	15mm	15mm	15mm	15mm	15mm	15mm	15mm
辊 数 Number of rolls	21	21	21	21	21	21	21
最 短 工 件 Shortest part	130	130	130	130	130	130	130
矫 平 速 度 Leveling speed	0-10m/min	0-10m/min	0-10m/min	0-10m/min	0-10m/min	0-10m/min	0-10m/min
电 压 Voltage	AC三相380VAC 3-phase 380V	AC三相380VAC 3-phase 380V	AC三相380VAC 3-phase 380V	AC三相380VAC 3-phase 380V	AC三相380VAC 3-phase 380V	AC三相380VAC 3-phase 380V	AC三相380VAC 3-phase 380V
选 配 Optional	<ul style="list-style-type: none"> 四/六重式辊以及辊数数量 Four and six-fold rollers and number of rollers 进出料流水线 Inlet and outflow assembly line 		<ul style="list-style-type: none"> 上下料取料机械手 Loading and unloading manipulator 支撑轮独立调节 The support roller is adjusted by motor independently 		<ul style="list-style-type: none"> 上下料取料机器人 Loading and unloading robot 自动检测平台 Automatic detection platform 		
<p>更大、特殊尺寸、更快速度可按需求订制 Larger, special size, faster speed can be customized according to demand</p>							

*设备参数根据材质(Material)Q235/屈服强度(Yield strength)235MPa计算。

御Royal 尊贵型 伺服液压高精密矫平系列

ROYAL (Honorable style): Servo hydraulic high precision leveling machine series



■ 整平前后对比图

Comparison chart before and after leveling



■ 整平前后对比图

Comparison chart before and after leveling



■ MHTY80系列(Series)

厚度(Thickness): 2.0-10.0mm

机型 Model	MHTY80-400	MHTY80-800	MHTY80-1000	MHTY80-1300	MHTY80-1650	MHTY80-2100	MHTY80-2600	MHTY80-3200	
宽度 Width	0-400mm	0-800mm	0-1000mm	0-1300mm	0-1650mm	0-2100mm	0-2600mm	0-3200mm	
辊径 Roll diameter	80	80	80	80	80	80	80	80	
额定厚度 Rated thickness	2.0-10.0mm	2.0-10.0mm	2.0-10.0mm	2.0-10.0mm	2.0-10.0mm	2.0-10.0mm	2.0-10.0mm	2.0-10.0mm	
最大厚度 Maximum thickness	25.0mm	25.0mm	25.0mm	25.0mm	25.0mm	25.0mm	25.0mm	25.0mm	
辊数 Number of rolls	15/19	15/19	15/19	15/19	15/19	15/19	15/19	15/19	
最短工件 Shortest part	150	150	150	150	150	150	150	150	
矫平速度 Leveling speed	0-10m/min	0-10m/min	0-10m/min	0-10m/min	0-10m/min	0-10m/min	0-10m/min	0-10m/min	
电压 Voltage	AC三相380VAC 3-phase 380V	AC三相380VAC 3-phase 380V	AC三相380VAC 3-phase 380V	AC三相380VAC 3-phase 380V	AC三相380VAC 3-phase 380V	AC三相380VAC 3-phase 380V	AC三相380VAC 3-phase 380V	AC三相380VAC 3-phase 380V	
选配 Optional	<ul style="list-style-type: none"> 四/六重式辊以及辊数数量 Four and six-fold rollers and number of rollers 进出料流水线 Inlet and outflow assembly line 		<ul style="list-style-type: none"> 上下料取料机机械手 Loading and unloading manipulator 支撑轮独立调节 The support roller is adjusted by motor independently 		<ul style="list-style-type: none"> 上下料取料机器人 Loading and unloading robot 自动检测平台 Automatic detection platform 				
<p>更大、特殊尺寸、更快速度可按需求订制 Larger, special size, faster speed can be customized according to demand</p>									

* 设备参数根据材质(Material)Q235/屈服强度(Yield strength)235MPa计算。

■ MHTY100系列(Series)

厚度(Thickness): 3.0-12.0mm

机型 Model	MHTY100-600	MHTY100-1000	MHTY100-1300	MHTY100-1600	MHTY100-2100	MHTY100-2600	MHTY100-3200		
宽度 Width	0-600mm	0-1000mm	0-1300mm	0-1600mm	0-2100mm	0-2600mm	0-3200mm		
辊径 Roll diameter	100	100	100	100	100	100	100		
额定厚度 Rated thickness	3.0-12.0mm	3.0-12.0mm	3.0-12.0mm	3.0-12.0mm	3.0-12.0mm	3.0-12.0mm	3.0-12.0mm		
最大厚度 Maximum thickness	30.0mm	30.0mm	30.0mm	30.0mm	30.0mm	30.0mm	30.0mm		
辊数 Number of rolls	15/19	15/19	15/19	15/19	15/19	15/19	15/19		
最短工件 Shortest part	160	160	160	160	160	160	160		
矫平速度 Leveling speed	0-10m/min	0-10m/min	0-10m/min	0-10m/min	0-10m/min	0-10m/min	0-10m/min		
电压 Voltage	AC三相380VAC 3-phase 380V	AC三相380VAC 3-phase 380V	AC三相380VAC 3-phase 380V	AC三相380VAC 3-phase 380V	AC三相380VAC 3-phase 380V	AC三相380VAC 3-phase 380V	AC三相380VAC 3-phase 380V		
选配 Optional	<ul style="list-style-type: none"> 四/六重式辊以及辊数数量 Four and six-fold rollers and number of rollers 进出料流水线 Inlet and outflow assembly line 		<ul style="list-style-type: none"> 上下料取料机机械手 Loading and unloading manipulator 支撑轮独立调节 The support roller is adjusted by motor independently 		<ul style="list-style-type: none"> 上下料取料机器人 Loading and unloading robot 自动检测平台 Automatic detection platform 				
<p>更大、特殊尺寸、更快速度可按需求订制 Larger, special size, faster speed can be customized according to demand</p>									

* 设备参数根据材质(Material)Q235/屈服强度(Yield strength)235MPa计算。

御Royal 尊贵型 伺服液压高精度矫平系列

ROYAL (Honorable style): Servo hydraulic high precision leveling machine series



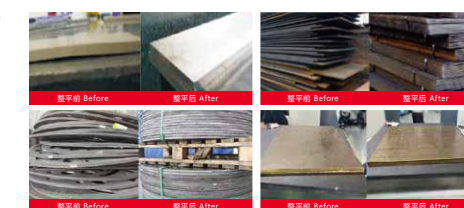
整平前后对比图

Comparison chart before and after leveling



整平前后对比图

Comparison chart before and after leveling



MHTY120系列(Series)

厚度(Thickness): 4.0-20.0mm

机型 Model	MHTY120-600	MHTY120-1000	MHTY120-1300	MHTY120-1600	MHTY120-2100	MHTY120-2600	MHTY120-3200
宽度 Width	0-600mm	0-1000mm	0-1300mm	0-1600mm	0-2100mm	0-2600mm	0-3200mm
辊径 Roll diameter	120	120	120	120	120	120	120
额定厚度 Rated thickness	4.0-20.0mm	4.0-20.0mm	4.0-20.0mm	4.0-20.0mm	4.0-20.0mm	4.0-20.0mm	4.0-20.0mm
最大厚度 Maximum thickness	40.0mm	40.0mm	40.0mm	40.0mm	40.0mm	40.0mm	40.0mm
辊数 Number of rolls	15/19	15/19	15/19	15/19	15/19	15/19	15/19
最短工件 Shortest part	190	190	190	190	190	190	190
矫平速度 Leveling speed	0-10m/min	0-10m/min	0-10m/min	0-10m/min	0-10m/min	0-10m/min	0-10m/min
电压 Voltage	AC三相380VAC 3-phase 380V	AC三相380VAC 3-phase 380V	AC三相380VAC 3-phase 380V	AC三相380VAC 3-phase 380V	AC三相380VAC 3-phase 380V	AC三相380VAC 3-phase 380V	AC三相380VAC 3-phase 380V
选配 Optional	<ul style="list-style-type: none"> 四/六重式辊以及辊数数量 Four and six-fold rollers and number of rollers 进出料流水线 Inlet and outflow assembly line 		<ul style="list-style-type: none"> 上下料取料机械手 Loading and unloading manipulator 支撑轮独立调节 The support roller is adjusted by motor independently 		<ul style="list-style-type: none"> 上下料取料机器人 Loading and unloading robot 自动检测平台 Automatic detection platform 		

更大、特殊尺寸、更快速度可按需求订制
Larger, special size, faster speed can be customized according to demand

*设备参数根据材质(Material)Q235/屈服强度(Yield strength)235MPa计算。

MHTY150系列(Series)

厚度(Thickness): 6.0-30.0mm

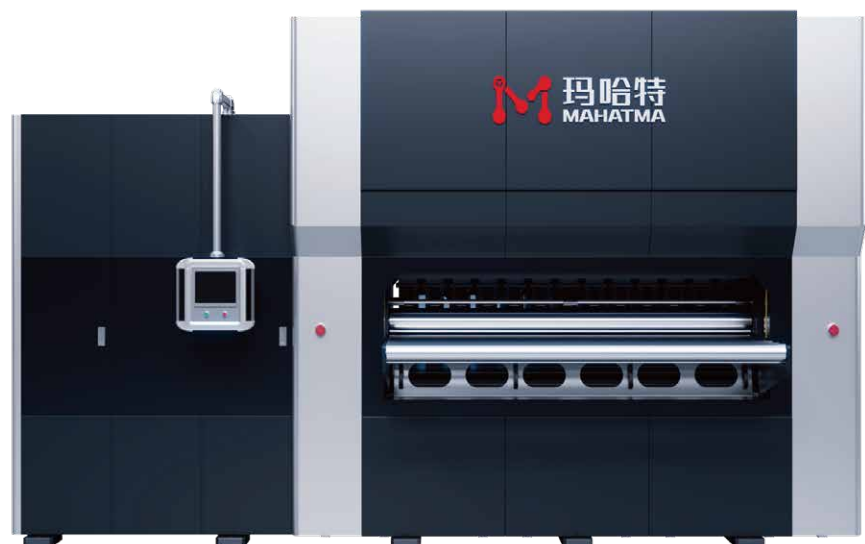
机型 Model	MHTY150-800	MHTY150-1000	MHTY150-1300	MHTY150-1700	MHTY150-2100	MHTY150-2600	MHTY150-3200
宽度 Width	0-800mm	0-1000mm	0-1300mm	0-1700mm	0-2100mm	0-2600mm	0-3200mm
辊径 Roll diameter	150	150	150	150	150	150	150
额定厚度 Rated thickness	6.0-30.0mm	6.0-30.0mm	6.0-30.0mm	6.0-30.0mm	6.0-30.0mm	6.0-30.0mm	6.0-30.0mm
最大厚度 Maximum thickness	50.0mm	50.0mm	50.0mm	50.0mm	50.0mm	50.0mm	50.0mm
辊数 Number of rolls	15/19	15/19	15/19	15/19	15/19	15/19	15/19
最短工件 Shortest part	250	250	250	250	250	250	250
矫平速度 Leveling speed	0-10m/min	0-10m/min	0-10m/min	0-10m/min	0-10m/min	0-10m/min	0-10m/min
电压 Voltage	AC三相380VAC 3-phase 380V	AC三相380VAC 3-phase 380V	AC三相380VAC 3-phase 380V	AC三相380VAC 3-phase 380V	AC三相380VAC 3-phase 380V	AC三相380VAC 3-phase 380V	AC三相380VAC 3-phase 380V
选配 Optional	<ul style="list-style-type: none"> 四/六重式辊以及辊数数量 Four and six-fold rollers and number of rollers 进出料流水线 Inlet and outflow assembly line 		<ul style="list-style-type: none"> 上下料取料机械手 Loading and unloading manipulator 支撑轮独立调节 The support roller is adjusted by motor independently 		<ul style="list-style-type: none"> 上下料取料机器人 Loading and unloading robot 自动检测平台 Automatic detection platform 		

更大、特殊尺寸、更快速度可按需求订制
Larger, special size, faster speed can be customized according to demand

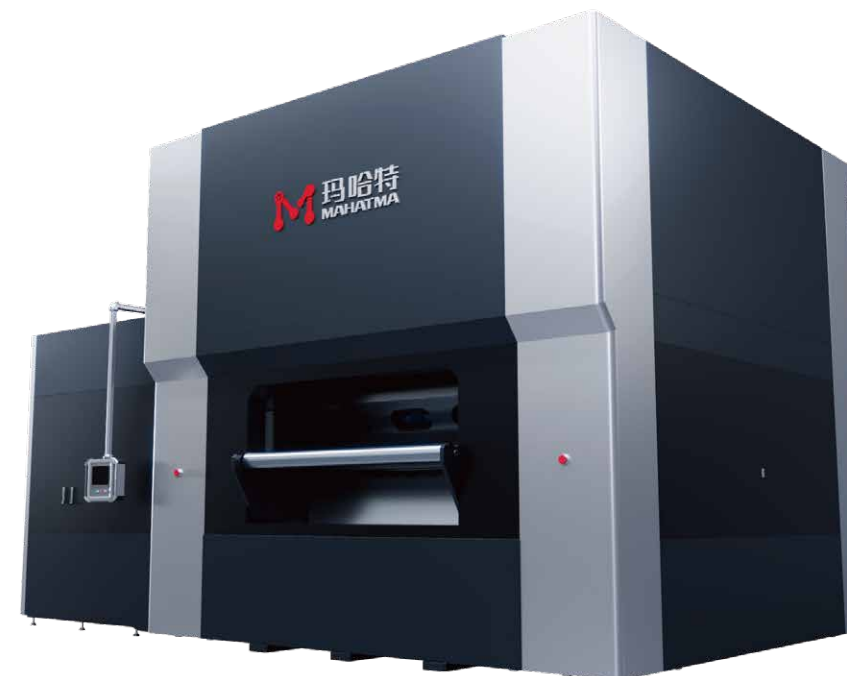
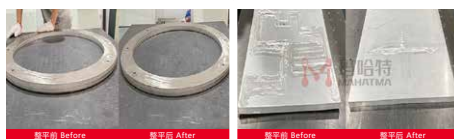
*设备参数根据材质(Material)Q235/屈服强度(Yield strength)235MPa计算。

御Royal 尊贵型 伺服液压高精密矫平系列

ROYAL (Honorable style): Servo hydraulic high precision leveling machine series



■ 整平前后对比图
Comparison chart before and after leveling



■ 整平前后对比图
Comparison chart before and after leveling



■ MHTY200系列(Series)

厚度(Thickness): 8.0-40.0mm

机型 Model	MHTY200-1000	MHTY200-1300	MHTY200-1600	MHTY200-2100	MHTY200-2600	MHTY200-3200
宽度 Width	0-1000mm	0-1300mm	0-1600mm	0-2100mm	0-2600mm	0-3200mm
辊径 Roll diameter	200	200	200	200	200	200
额定厚度 Rated thickness	8.0-40.0mm	8.0-40.0mm	8.0-40.0mm	8.0-40.0mm	8.0-40.0mm	8.0-40.0mm
最大厚度 Maximum thickness	60.0mm	60.0mm	60.0mm	60.0mm	60.0mm	60.0mm
辊数 Number of rolls	11/15	11/15	11/15	11/15	11/15	11/15
最短工件 Shortest part	310	310	310	310	310	310
矫平速度 Leveling speed	0-10m/min	0-10m/min	0-10m/min	0-10m/min	0-10m/min	0-10m/min
电压 Voltage	AC三相380VAC 3-phase 380V	AC三相380VAC 3-phase 380V	AC三相380VAC 3-phase 380V	AC三相380VAC 3-phase 380V	AC三相380VAC 3-phase 380V	AC三相380VAC 3-phase 380V
选配 Optional	<ul style="list-style-type: none"> 四/六重式辊以及辊数数量 Four and six-fold rollers and number of rollers 进出料流水线 Inlet and outflow assembly line 		<ul style="list-style-type: none"> 上下料取料机械手 Loading and unloading manipulator 支撑轮独立调节 The support roller is adjusted by motor independently 		<ul style="list-style-type: none"> 上下料取料机器人 Loading and unloading robot 自动检测平台 Automatic detection platform 	
<p>更大、特殊尺寸、更快速度可按需求订制 Larger, special size, faster speed can be customized according to demand</p>						

*设备参数根据材质(Material)Q235/屈服强度(Yield strength)235MPa计算。

■ MHTY260系列(Series)

厚度(Thickness): 10.0-60.0mm

机型 Model	MHTY260-1300	MHTY260-1600	MHTY260-2100	MHTY260-2600	MHTY260-3200	MHTY260-4000
宽度 Width	0-1300mm	0-1600mm	0-2100mm	0-2600mm	0-3200mm	0-4000mm
辊径 Roll diameter	260	260	260	260	260	260
额定厚度 Rated thickness	10.0-60.0mm	10.0-60.0mm	10.0-60.0mm	10.0-60.0mm	10.0-60.0mm	10.0-60.0mm
最大厚度 Maximum thickness	80.0mm	80.0mm	80.0mm	80.0mm	80.0mm	80.0mm
辊数 Number of rolls	9/11	9/11	9/11	9/11	9/11	9/11
最短工件 Shortest part	400	400	400	400	400	400
矫平速度 Leveling speed	0-10m/min	0-10m/min	0-10m/min	0-10m/min	0-10m/min	0-10m/min
电压 Voltage	AC三相380VAC 3-phase 380V	AC三相380VAC 3-phase 380V	AC三相380VAC 3-phase 380V	AC三相380VAC 3-phase 380V	AC三相380VAC 3-phase 380V	AC三相380VAC 3-phase 380V
选配 Optional	<ul style="list-style-type: none"> 四/六重式辊以及辊数数量 Four and six-fold rollers and number of rollers 进出料流水线 Inlet and outflow assembly line 		<ul style="list-style-type: none"> 上下料取料机械手 Loading and unloading manipulator 支撑轮独立调节 The support roller is adjusted by motor independently 		<ul style="list-style-type: none"> 上下料取料机器人 Loading and unloading robot 自动检测平台 Automatic detection platform 	
<p>更大、特殊尺寸、更快速度可按需求订制 Larger, special size, faster speed can be customized according to demand</p>						

*设备参数根据材质(Material)Q235/屈服强度(Yield strength)235MPa计算。

御Royal 尊贵型 伺服液压高精密矫平系列

ROYAL (Honorable style): Servo hydraulic high precision leveling machine series



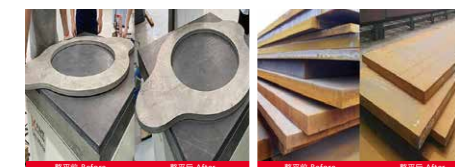
■ 整平前后对比图

Comparison chart before and after leveling



■ 整平前后对比图

Comparison chart before and after leveling



■ MHTY300系列(Series)

厚度(Thickness): 15.0-80.0mm

机型 Model	MHTY300-1300	MHTY300-1600	MHTY300-2100	MHTY300-2600	MHTY300-3200	MHTY300-4000
宽度 Width	0-1300mm	0-1600mm	0-2100mm	0-2600mm	0-3200mm	0-4000mm
辊径 Roll diameter	300	300	300	300	300	300
额定厚度 Rated thickness	15.0-80.0mm	15.0-80.0mm	15.0-80.0mm	15.0-80.0mm	15.0-80.0mm	15.0-80.0mm
最大厚度 Maximum thickness	100.0mm	100.0mm	100.0mm	100.0mm	100.0mm	100.0mm
辊数 Number of rolls	9	9	9	9	9	9
最短工件 Shortest part	480	480	480	480	480	480
矫平速度 Leveling speed	0-10m/min	0-10m/min	0-10m/min	0-10m/min	0-10m/min	0-10m/min
电压 Voltage	AC三相380VAC 3-phase 380V	AC三相380VAC 3-phase 380V	AC三相380VAC 3-phase 380V	AC三相380VAC 3-phase 380V	AC三相380VAC 3-phase 380V	AC三相380VAC 3-phase 380V
选配 Optional	<ul style="list-style-type: none"> 四/六重式辊以及辊数数量 Four and six-fold rollers and number of rollers 进/出料流水线 Inlet and outflow assembly line 上下料取料机械手 Loading and unloading manipulator 支撑轮独立调节 The support roller is adjusted by motor independently 上下料取料机器人 Loading and unloading robot 自动检测平台 Automatic detection platform 					
<p>更大、特殊尺寸、更快速度可按需求订制 Larger, special size, faster speed can be customized according to demand</p>						

*设备参数根据材质(Material)Q235/屈服强度(Yield strength)235MPa计算。

■ MHTY400系列(Series)

厚度(Thickness): 20.0-100.0mm

机型 Model	MHTY400-1300	MHTY400-1600	MHTY400-2100	MHTY400-2600	MHTY400-3200	MHTY400-4000
宽度 Width	0-1300mm	0-1600mm	0-2100mm	0-2600mm	0-3200mm	0-4000mm
辊径 Roll diameter	400	400	400	400	400	400
额定厚度 Rated thickness	20.0-100.0mm	20.0-100.0mm	20.0-100.0mm	20.0-100.0mm	20.0-100.0mm	20.0-100.0mm
最大厚度 Maximum thickness	120.0mm	120.0mm	120.0mm	120.0mm	120.0mm	120.0mm
辊数 Number of rolls	9	9	9	9	9	9
最短工件 Shortest part	610	610	610	610	610	610
矫平速度 Leveling speed	0-10m/min	0-10m/min	0-10m/min	0-10m/min	0-10m/min	0-10m/min
电压 Voltage	AC三相380VAC 3-phase 380V	AC三相380VAC 3-phase 380V	AC三相380VAC 3-phase 380V	AC三相380VAC 3-phase 380V	AC三相380VAC 3-phase 380V	AC三相380VAC 3-phase 380V
选配 Optional	<ul style="list-style-type: none"> 四/六重式辊以及辊数数量 Four and six-fold rollers and number of rollers 进/出料流水线 Inlet and outflow assembly line 上下料取料机械手 Loading and unloading manipulator 支撑轮独立调节 The support roller is adjusted by motor independently 上下料取料机器人 Loading and unloading robot 自动检测平台 Automatic detection platform 					
<p>更大、特殊尺寸、更快速度可按需求订制 Larger, special size, faster speed can be customized according to demand</p>						

*设备参数根据材质(Material)Q235/屈服强度(Yield strength)235MPa计算。