

MAHATMA
玛哈特

全球高端矫平设备领导品牌
The world's leading brand of high-end leveling equipment

几秒 矫平各种金属板材

专业矫平

玛哈特集团
MAHATMA GROUP

400-0898-858

0769-8630 1265 mht@gddys.com

www.mahatma.com.cn

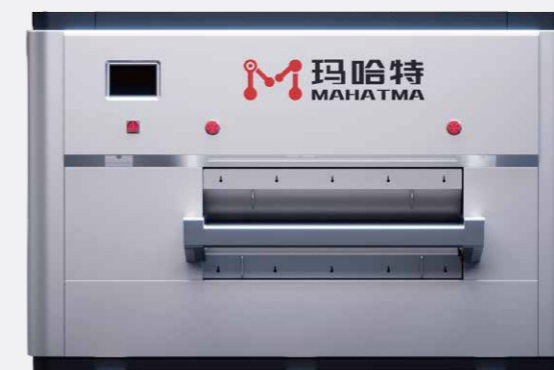
广东省东莞市石碣镇西南嘉应一街3号玛哈特工业园
MAHATMA Industrial Park, No. 3, Jiaying 1st Street, Shijie Town, Dongguan City, Guangdong Province

江西省抚州市高新区大觉山路玛哈特工业园
MAHATMA Industrial Park, Dajue Road, High-tech Zone, Fuzhou City, Jiangxi Province

香港九龙尖沙咀柯士甸路7-9号焕利商业大厦7楼63室
Room 63, 7/F, Woon Lee Commercial Building, 7-9 Austin Ave, Tsim Sha Tsui, Kowloon, Hong Kong



公众号二维码
Official Account



集团介绍

Group Introduction



MAHATMA

■ 玛哈特全球智能制造中心

MAHATMA global Intelligent manufacturing center

位于江西抚州国家高新技术开发区，一期占地20000m²，二期占地30000m²，员工200+；研发专家20+。我们拥有先进的生产设施和设备，注重自动化和智能化应用，坚持投资和改进，以提高生产效率和产品质量。

致力于技术进步和创新，为客户提供最优质的产品和服务。



Located in Fuzhou National High tech Development Zone, Jiangxi Province, the first phase covers an area of 20000 square meters and the second phase covers an area of 30000 square meters, with over 200 employees; More than 20 R&D experts. We have advanced production facilities and equipment, focus on automation and intelligent applications, adhere to investment and improvement, to improve production efficiency and product quality.

Dedicated to technological progress and innovation, providing customers with the highest quality products and services.

■ 集团简介

Group profile

玛哈特以助力智能制造国产替代与产业升级为使命，自2003年成立以来，在矫平机、自动化产线、智慧系统及配套搭载设备等前沿创新领域，不断地革新技术产品与解决方案。

是一家集研发、生产、销售、服务四位一体的钣金零件矫平智造解决方案服务商。是具有全球竞争力的国际高端矫平设备制造领导品牌，同时也是国家高新技术及专精特新企业。

玛哈特作为智慧超级矫平技术设备的品类开创者，实现了从低端到高端矫平设备的全品类覆盖，且二十余年的行业积累与技术创新，我们的制造工艺与矫平精度均已达到国际最先进水平。

MAHATMA mission is to assist in the domestic substitution and industrial upgrading of intelligent manufacturing. Since its establishment in 2003, it has continuously innovated its technological products and solutions in cutting-edge innovation fields such as leveling machines, automated production lines, smart systems, and supporting equipment.

We are a sheet metal parts straightening intelligent manufacturing solution service provider that integrates research and development, production, sales, and service. It is a leading international high-end leveling equipment intelligent manufacturing brand with global competitiveness, as well as a national high-tech and specialized new enterprise.

As the pioneer of intelligent super leveling technology equipment, MAHATMA has achieved full category coverage of leveling equipment from low-end to high-end. With more than 20 years of industry accumulation and technological innovation, our manufacturing process and leveling accuracy have reached the most advanced international level.

2003年

公司成立
Found

15000+

客户案例
Cases

50000m²

生产基地
Plants

10家

分公司
Branches

350+

公司员工
Employee

20000m²

研发中心
R&D Center

■ 玛哈特全球研发实验中心

MAHATMA global R&D center

位于东莞，占地约20000m²，员工150+，研发专家30+。我们集设计、研发、代工、销售、展厅于一体，投入巨大资源和人力，聚集行业顶尖专家和科学家，致力于智慧超矫技术的应用和发展。并携手清华大学等国内外顶尖高校合作打造产学研基地，继续探索技术前沿，开发高效、精准、安全、节能的超矫技术，为产业升级制造做出贡献。

创新方法和工具。我们将致力于开发高效、精准、安全、节能的超矫技术，应用于钣金、工业、交通、能源等多个领域，为人类社会的可持续发展做出贡献。

Located in Dongguan, covering an area of approximately 15000 square meters, with over 150 employees and 30 research and development experts. We Integrating design, research and development, OEM, sales, and exhibition halls, investing huge resources and manpower, Gathering top-notch experts and scientists in the industry, dedicated to the application and development of intelligent super correction technology. And collaborate with top domestic and foreign universities such as Tsinghua University to build industry university research bases, continuing to explore At the forefront of technology, we aim to develop efficient, precise, safe, and energy-saving super straightening technologies for industrial upgrading Make contributions to manufacturing.

Innovative methods and tools. We will be committed to developing efficient, precise, safe, and energy-saving super straightening technologies, which will be applied in multiple fields such as sheet metal, industry, transportation, and energy Domain contributes to the sustainable development of human society.

■ 什么是辊式矫平

What is leveling

辊式矫平是获得高精度平整零件、板材或带料的一种简单快速的加工方法。比如，在过去，矫平只能靠富有经验的老工人进行。而对于辊式矫平，任何人都能快速方便地掌握加工方法。

采用辊式矫平时，一块板材将先后经过连续多次的交变弯曲。从辊式矫平机的入口至出口，交错排列着各组矫平辊。这样，在两个相对的矫平辊中始终有一个辊为下压辊。从第一个矫平辊至出口处，交变弯曲程度逐步减弱。弯曲过程类似一个逐步减弱的正弦曲线。通过弹塑性交错弯曲和不断减弱的变形量，板材将变得平整，更重要的是消除了应力并最终将其矫平！

矫平后直接进行后续加工，无需再费时费力的返工。所以说辊式矫平就是把材料本身内应力释放达到平面度的一个过程！简称“消除内应力，矫平平面度！”

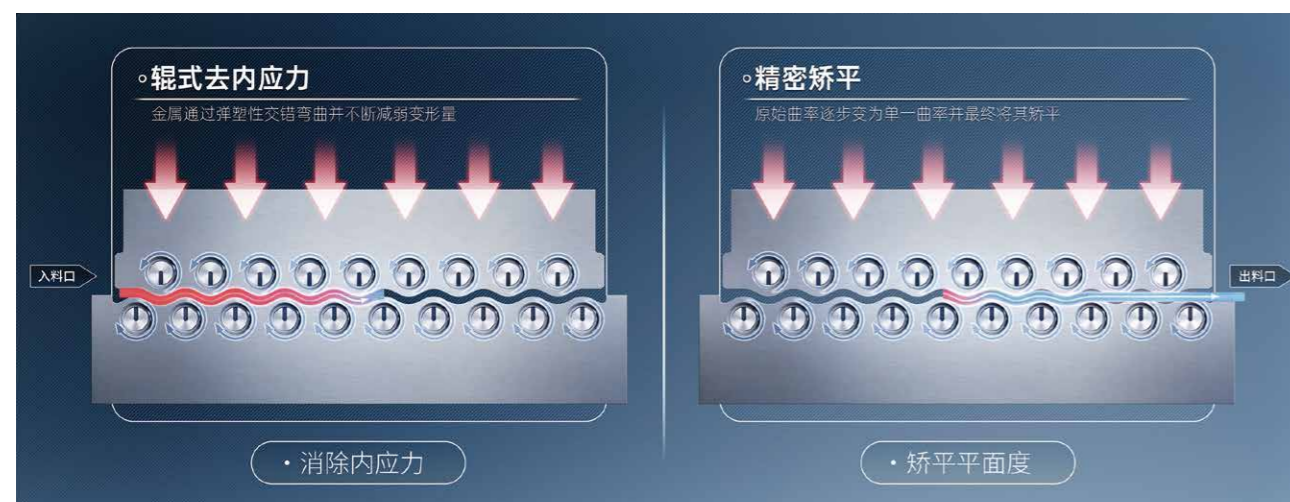
Roller leveling is a simple and fast processing method for obtaining high-precision flat parts, plates, or strips. For example, in the past, leveling could only be carried out by experienced and experienced workers. For roller leveling, anyone can quickly and conveniently master the processing method.

By using roller leveling, a plate will undergo multiple consecutive alternating bends. From the inlet to the outlet of the roller leveler, each group of leveling rollers is arranged in a staggered manner. In this way, there is always one roller in the two opposite leveling rollers that is the down pressing roller. From the first leveling roller to the outlet, the alternating bending degree gradually weakens. The bending process is similar to a gradually weakening Sine wave. Through elastic-plastic staggered bending and continuously decreasing deformation, the sheet will become flat, and more importantly, stress is eliminated and ultimately leveled!

After leveling, direct subsequent processing is carried out without the need for time-consuming and laborious rework. So roller leveling is a process of releasing the internal stress of the material itself to flatness! Abbreviated as "eliminating internal stress, leveling flatness!"

“只有致力于创新的人才会真正地发现矫平技术的未来”

"Only those committed to innovation will truly discover the future of leveling technology."

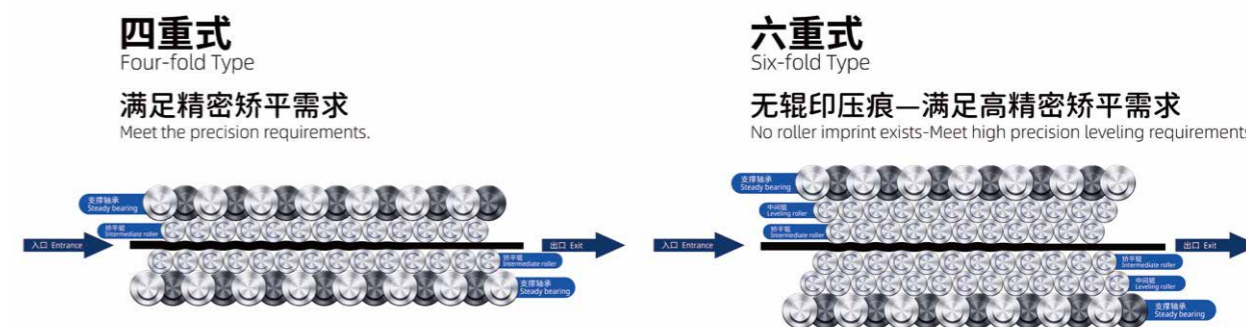


■ 结构介绍

Structure introduction

辊式矫平有二重、四重、六重结构，随着重数的增加，矫平效果也更加精密，中间辊加上下支撑保证辊的不可压缩性，完美的降低了上下矫平辊之间的空白空隙，利用材料的“包辛格效应”对板材多次反复弯曲，变弯曲的强度往出口处逐渐减小，随着矫平辊的数量增多，交变弯曲次数也同样增加使多种原始曲率逐步变为单一曲率，并最终将其矫平，达到工艺要求的平整精度。

The roll leveling has a double, four and six structure. With the increase of the weight, the leveling effect is more precise. The middle roll and the lower support ensure the Incompressibility of the roll, which perfectly reduces the gap between the upper and lower leveling rolls. The plate is repeatedly bent by using the "Bauschinger effect" of the material, and the bending strength gradually decreases toward the exit. With the increase of the number of leveling rolls, The number of alternating bends also increases, gradually transforming various original curvatures into a single curvature, and ultimately leveling them to achieve the required flatness accuracy in the process.



四/六重式辊(原理图)
Four/six-fold rollers (principle diagram)

四重式性能与特点

Performances and features of Four layers type

- 校平辊受力分布均匀
- 结构刚性好，变形小，校平精度高
- 校平板表面校好，传动平稳，噪音低
- 适用于碳钢板，不锈钢板

- Uniform force distribution of leveling rollers
- Good structure rigidity, small deformation, high leveling accuracy
- The surface quality of leveling plate is good, the transmission is stable, and the noise is low

六重式性能与特点

Performances and features of Six Layers type

- 校平辊受力分布均匀、排泄杂物
- 结构刚性好，变形小，校平精度高
- 校平板表面质量好，传动平稳，噪音低，无辊压痕
- 单面分三层辊:支撑轴承，中间辊，矫平辊
- 适用于铜板，铝板，不锈钢板等表面要求高的金属材料

- Uniform force distribution of leveling rollers
- Good structure rigidity, small deformation, high leveling accuracy
- The surface quality of the leveling plate is good, the transmission is stable, the noise is low, and there is no roller indentation
- Single-sided three-layer roller: support bearing, intermediate

产品体系

Product Series

矫平天下不平事

Let things go back right way

用全新智慧超矫技术重构工业机械制造相关行业

Reconstructing industrial machinery manufacturing-related industries with new smart super-correction technology

御 Royal 尊贵型

伺服液压高精度矫平系列

Servo hydraulic high precision leveling machine series



悟 Wits 旗舰型

高端智慧数控超矫系列

Intelligent Servo-CNC Leveling machine series



慧 Mastery 豪华型

智慧数控精密矫平系列

Intelligent CNC Leveling machine series



渺 Vague 基础型

二四重普通矫平系列

Two/four layers leveling machine series



自动化智慧工厂

Automated smart factory

自动化智慧工厂是矫平自动化智能制造的一站式解决方案，是一个集成了自动化技术、信息技术、人工智能和物联网技术的现代化生产线，我们可以提供从设计、集成到实施的全套服务，帮助企业构建高效、灵活的智能生产线，实现从原材料到成品的无缝连接。该解决方案涵盖了从自动开卷矫平送料、自动剪切和冲压、激光下料、自动收料和上料、去毛料、精密矫平与自动检测平面度、自动折弯、焊接和装配、喷涂到智能监控和维护等各个环节，通过智能数字化工厂实现生产过程的优化和决策支持，进而达到提高生产效率、降低成本、提升产品质量等目的，是现代工业对于智能制造和工业4.0的理想选择。

The automated smart factory is a one-stop solution for leveling automated smart manufacturing. It is a modern production line that integrates automation technology, information technology, artificial intelligence and Internet of Things technology. We can provide a full set of services from design, integration to implementation to help Enterprises build efficient and flexible intelligent production lines to achieve seamless connections from raw materials to finished products. The solution covers everything from automatic uncoiling, leveling and feeding, automatic shearing and stamping, laser blanking, automatic collecting and loading, wool removal, precision leveling and automatic flatness detection, automatic bending, welding and assembly, spraying. In all aspects, including intelligent monitoring and maintenance, the optimization of the production process and decision support can be achieved through intelligent digital factories, thereby improving production efficiency, reducing costs, and improving product quality. It is an ideal choice for modern industry for intelligent manufacturing and Industry 4.0.



高精度自动开卷矫平冲压线

High-precision automatic uncoiling, leveling and stamping line



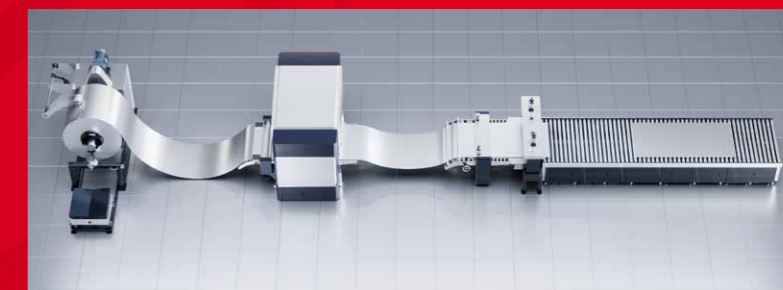
自动矫平检测线

Automatic detection line



激光卷料落料线

Laser coil blanking line



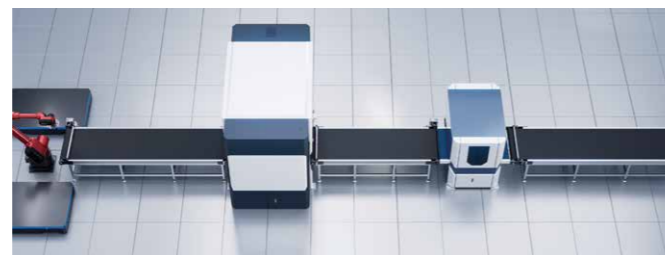
高精度自动开卷矫平剪切线

High-precision automatic uncoiling, leveling and shearing line



自动平面度检测仪

Automatic flatness detector



矫平去毛刺自动化生产线

Leveling and deburring automated production line



全自动成型线

(含上料、矫平、送料、剪切、折弯、焊接等)

high-precision uncoiling, leveling, feeding, shearing, bending and welding

技术创新与突破

Technological innovation and breakthroughs

智慧超级矫平技术

Smart super leveling technology

全球首创 掌握下一代矫平技术

World's first
Master the next generation of leveling technology

全智能自动化无人操作
Fully intelligent automated unmanned operation

我们致力于技术创新和突破，在以董事长为首的研发团队的多年的努力和技术沉淀下，我们成功研发了行业领先的智慧超级矫平技术。

We are committed to technological innovation and breakthroughs. With years of hard work and technological accumulation by the R&D team headed by the chairman, we have successfully developed industry-leading smart super leveling technology.

智慧超级矫平技术

Smart super leveling technology

该技术通过先进的控制系统和矫平算法，实现高效的实时控制和自动调整，提高矫平效果和稳定性。采用激光三维检测技术和图像处理算法，实时监测和识别表面缺陷，准确评估矫平效果并修正矫平参数。我们还通过创新材料和工艺，优化矫平辊轮的设计和耐磨性，提高矫平效果和制造效率。这些突破使得我们的智慧超级矫平技术在市场上得到广泛认可。我们将持续追求技术进步，为客户提供高品质、智能化的矫平解决方案。

This technology uses advanced control systems and leveling algorithms to achieve efficient real-time control and automatic adjustment, improving the leveling effect and stability. Laser three-dimensional detection technology and image processing algorithms are used to monitor and identify surface defects in real time, accurately evaluate the leveling effect and correct the leveling parameters. We also optimize the design and wear resistance of the leveling rollers through innovative materials and processes to improve the leveling effect and manufacturing efficiency. These breakthroughs have made our smart super leveling technology widely recognized in the market. We will continue to pursue technological progress and provide customers with high-quality, intelligent leveling solutions.

智慧超矫的三个维度

Three dimensions of wisdom and super correction



更透彻的掌控
More thorough control

全自动的检测系统可以自主检测零件的偏差范围，智慧矫平设备联动提取实时数据进行精准矫正，以及远程监控设备可以告知故障发生的时间、地点及低效点，从而实现更智慧的服务供给。

The fully automatic detection system can independently detect the deviation range of parts, the smart leveling equipment can link to extract real-time data for precise correction, and the remote monitoring equipment can inform the time, location and inefficiency points of faults, thereby achieving smarter service provision.



更广泛的兼容
Wider compatibility

具有智慧数控控制系统的设备可以自主适配大多数传统产线，无缝结合，真正做到互通互联，产线升级先矫这一步。

Equipment with intelligent CNC control systems can independently adapt to most traditional production lines and integrate seamlessly to truly achieve interoperability and interconnection. This step must be corrected first when upgrading production lines.



更深入的智慧
Deeper wisdom

设备中的传感器、控制器、变频器以及智能屏幕、数字控制和分析工具自动监控矫平精度的双向流动。

Sensors, controllers, frequency converters as well as smart screens, digital control and analysis tools in the equipment automatically monitor the two-way flow of leveling accuracy.





■ 设备功能

Device function

该系列机型采用了伺服电机、数控技术及自主研发的智慧超矫数控系统，系统中存有大量的矫平工艺参数，可以根据不同的卷料和板料自动设定矫平压力和初始工作参数，并可以随时修改、储存、调用工艺和编辑设备参数的功能。

配备自动激光三维检测、误操作识别预警等智能化功能，是集尖端技术于一身的高端矫平设备。伺服电机提供了高速度、高扭矩和精确位置控制的能力，有助于实现快速、平稳的矫平操作。减少液压油的使用和能源消耗使得伺服液压矫平机更加环保。

This series of machines adopts servo motors, CNC technology and a self-developed intelligent super-leveling CNC system. There are a large number of leveling process parameters in the system, which can automatically set the leveling pressure and initial work according to different coils and sheets. Parameters, and can modify, store, call process and edit equipment parameters at any time.

Equipped with intelligent functions such as automatic laser three-dimensional detection, misoperation identification and early warning, it is a high-end leveling equipment integrating cutting-edge technology. Servo motors provide the capability for high speed, high torque and precise position control, helping to achieve fast, smooth leveling operations. Reducing hydraulic oil usage and energy consumption makes servo-hydraulic levelers more environmentally friendly.

<ul style="list-style-type: none"> ■ 标准配置：Micro Innovation公司的触摸式屏幕 	<ul style="list-style-type: none"> ■ standard configuration: Micro Innovation company's touch screen
<ul style="list-style-type: none"> ■ 可以存储200个零件材料信息（根据客户要求，存储容量还可以扩大） 	<ul style="list-style-type: none"> ■ Can store 200 records (according to customer requirements, Storage capacity can also be expanded)
<ul style="list-style-type: none"> ■ 简洁的、一目了然的操作界面 	<ul style="list-style-type: none"> ■ concise, clear user interface
<ul style="list-style-type: none"> ■ 专业的计算程序，快速的矫平间隙设置 	<ul style="list-style-type: none"> ■ professional application, fast levelling gap setting
<ul style="list-style-type: none"> ■ 数据显示至0.01mm范围 	<ul style="list-style-type: none"> ■ according to 0.01 mm
<ul style="list-style-type: none"> ■ 可选配置：远程服务 	<ul style="list-style-type: none"> ■ optional configuration: remote service

悟 Wits 旗舰型 智慧数控超矫系列

Wits (Flagship style): Intelligent Servo-CNC Leveling machine series

尊贵奢华	工业美学设计，非凡大师宝马漆，多层精工涂装工艺，实力象征，彰显尊贵气质与品质
鲲鹏结构	专利结构工艺，高强度构造，防震抗压，稳如磐石，全开放式设计，一键展翅
节能先锋	伺服机电矫平间隙控制，精密高效，采用最新的节能技术，节能环保，动力强悍
格律辊组	密布式全支撑结构结合宽支撑轴，高强度少压痕，增强承载能力，持久稳定，杜绝变形
标杆性能	智能辊盒抽出清洁系统、快速轻松地清洁矫平辊和支撑辊！国内第一
智慧科技	智能化人机界面，实时监控和调整，远程控制、自动计数等前沿功能
安全守护	过载保护、光电保护、误操作智能预警等
全场景化	可与各类生产线无缝对接，提高生产线的自动化程度
防塌角功能	采用动态伺服补偿技术，预防塌角，提高矫平精度和材料的表面质量

Noble and luxurious	Industrial aesthetic design, Extraordinary Master BMW paint, multi-layer precision painting process, symbol of strength, highlighting noble temperament and quality;
Kunpeng structure	Patented structural technology, high-strength structure, shock-proof and pressure-resistant, rock-solid, fully open design, one-click spread;
Metrical roller set	Servo electromechanical leveling gap control, precise and efficient, using the latest energy-saving technology, energy-saving and environmentally friendly, powerful power;
Energy Saving Pioneer	Dense full support structure combined with wide support shaft, high strength and less indentation, enhanced load-bearing capacity, long-lasting stability, and elimination of deformation;
Benchmark performance	Smart roller box pull-out cleaning system for quick and easy cleaning of leveling and support rollers! No. 1 in China;
Smart technology	Intelligent human-machine interface, real-time monitoring and adjustment, remote control, automatic counting and other cutting-edge functions;
Security guard	Overload protection, photoelectric protection, intelligent early warning of misoperation, etc;
Full scene	Can be seamlessly connected with various production lines to improve the automation of the production line;
Anti-sag function	Dynamic servo compensation technology is used to prevent angle collapse and improve leveling accuracy and material surface quality.

智能操作系统	全新风格，强大的动态性能和稳定性，提升软件操作流畅度；集成快速智能矫平模式
MHTP系列高精密矫平机	自主知识产权，多项专利技术，超高效率矫平，智能控制
全机床自润滑系统	高智能、高集成、免维护，一键设置油压低报警，无油停机，避免润滑不及时造成机床磨损
远程云控制系统	可实现远程监控设备运行状态，故障查询、故障判断等，实时对设备进行云监控
自主研制齿轮箱	齿轮万向节传动，加速度和速度更快，具有较好的刚性和耐冲击力
中空结构机床	机床主体无受热区域，永久使用无热变形，机床主体稳定可靠，使矫平精度长期稳定

Intelligent operating system	New style of intelligent operating system, powerful dynamic performance and stability, improve software operation fluency; integrated fast intelligent leveling mode;
MHTP series high-precision leveling machine	Independent intellectual property rights, a number of patented technologies, ultra-high-efficiency leveling, intelligent control;
Self-lubricating system for all machine tools	High intelligence, high integration, maintenance-free, one-button setting for low oil pressure alarm, no oil shutdown, avoiding machine wear caused by untimely lubrication;
Remote cloud control system	It can realize remote monitoring of equipment operating status, fault query, fault judgment, etc., and real-time cloud monitoring of equipment; self-developed gearbox gear universal joint transmission, faster acceleration and speed, and better rigidity and impact resistance;
Independently developed gearbox	Gear universal joint transmission, faster acceleration and speed, better rigidity and impact resistance;
Hollow structure machine tool	The main body of the machine tool has no heating area, and there is no thermal deformation in permanent use. The main body of the machine tool is stable and reliable, so that the leveling accuracy is stable for a long time.



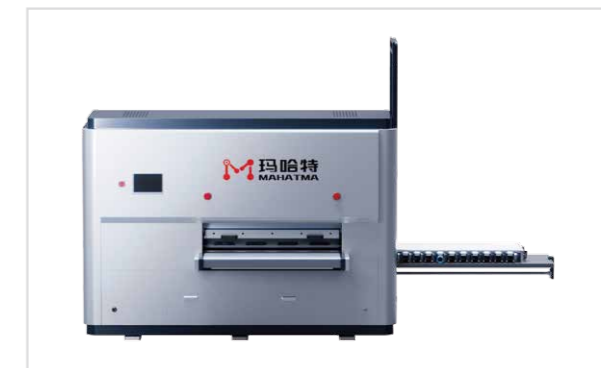
带自动检测示意图

Schematic diagram with automatic detection

- 可以用于检测金属产品平面度，测量过程不需要停顿，测量速度快；
- 自动检测，大大提高测量效率，实现机械化快速测量平整度，操作简单便利、高度精确。
- 测量应用：快速检测金属板材的平面度。
- Can be used to detect the flatness of metal products, the measurement process does not need to stop, the measurement speed is fast;
- Automatic detection, greatly improve the efficiency of measurement, mechanization and rapid measurement of flatness, simple and convenient operation, highly accurate.
- Measurement application: rapid detection of the flatness of metal sheet.

■ 辊轮自动抽出清洁装置

Roller automatic extraction cleaning device



玛哈特专利技术，国内独一无二，整体式矫平辊盒打开保养

Mahatma patent technology, unique in China, the whole leveling roller box open maintenance

Clean Cs自动辊盒抽出清洁系统是内唯一的矫平辊清洁专利技术，是专为矫平机设计的创新技术，旨在解决辊盒清洁的需求。相对于较粗较重的矫平辊，拆卸时使用吊车等辅助工具，该系统实现了自动化辊盒抽出清洁，只需一人操作即可，大幅度提高操作安全性与生产效率。还提升了清洁效率和便利性。通过全面覆盖辊盒，系统确保了彻底的清洁，避免残留物对生产线的不良影响，减少生产线停机时间和人工操作的工作量，确保产品表面质量的一致性。

在矫平过程中，由于常常会出现材料本身带有的毛刺、金属碎屑和氧化物等残留物滞留在矫平辊上的情况。如果不及时清洁，这些残留物可能会对后续产品的表面质量造成压痕、压伤和划伤等不良影响。该系统适用于铝合金等产品的矫平工艺。

Clean Cs automatic roller box extraction cleaning system is the only patented technology for leveling roller cleaning in China. It is an innovative technology specially designed for leveling machines and aims to solve the need for roller box cleaning. Compared with thicker and heavier leveling rollers, which require the use of cranes and other auxiliary tools when disassembling, this system realizes automated roll box extraction and cleaning, requiring only one person to operate, greatly improving operational safety and production efficiency. It also improves cleaning efficiency and convenience. By fully covering the roller box, the system ensures thorough cleaning, avoids the negative impact of residues on the production line, reduces production line downtime and manual operation workload, and ensures consistent product surface quality.

And during the leveling process, residues such as burrs, metal chips, and oxides contained in the material often remain on the leveling roller. If not cleaned in time, these residues may cause negative effects such as dents, bruises and scratches on the surface quality of subsequent products. This system is especially suitable for the leveling process of aluminum alloy and other products.

悟 Wits 旗舰型 智慧数控超矫系列

Wits (Flagship style): Intelligent Servo-CNC Leveling machine series



■ 整平前后对比图

Comparison chart before and after leveling



■ MHTP15系列(Series)

厚度(Thickness): 0.08-1.0mm

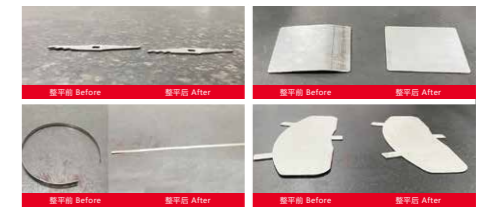
机型 Model	MHTP15-300-33	MHTP15-400-33	MHTP15-600-33
宽度 Width	0-300mm	0-400mm	0-600mm
辊径 Roll diameter	15	15	15
额定厚度 Rated thickness	0.08-1.0mm	0.08-1.0mm	0.08-1.0mm
最大厚度 Maximum thickness	2.0mm	2.0mm	2.0mm
辊数 Number of rolls	33	33	33
最短工件 Shortest part	30	30	30
矫平速度 Leveling speed	0-10m/min	0-10m/min	0-10m/min
电压 Voltage	AC三相380VAC 3-phase 380V	AC三相380VAC 3-phase 380V	AC三相380VAC 3-phase 380V
选配 Optional	<ul style="list-style-type: none"> 四/六重式辊以及辊数数量 Four and six-fold rollers and number of rollers 进出料流水线 Inlet and outflow assembly line 	<ul style="list-style-type: none"> 上下料取料机械手 Loading and unloading manipulator 支撑轮独立调节 The support roller is adjusted by motor independently 	<ul style="list-style-type: none"> 上下料取料机器人 Loading and unloading robot 自动检测平台 Automatic detection platform
<p>更大、特殊尺寸、更快速度可按需求订制 Larger, special size, faster speed can be customized according to demand</p>			

*设备参数根据材质(Material)Q235/屈服强度(Yield strength)235MPa计算。



■ 整平前后对比图

Comparison chart before and after leveling



■ MHTP20系列(Series)

厚度(Thickness): 0.3-1.2mm

机型 Model	MHTP20-400-23	MHTP20-800-23	MHTP20-1300-23
宽度 Width	0-400mm	0-800mm	0-1300mm
辊径 Roll diameter	20	20	20
额定厚度 Rated thickness	0.3-1.2mm	0.3-1.2mm	0.3-1.2mm
最大厚度 Maximum thickness	3.0mm	3.0mm	3.0mm
辊数 Number of rolls	23	23	23
最短工件 Shortest part	40	40	40
矫平速度 Leveling speed	0-10m/min	0-10m/min	0-10m/min
电压 Voltage	AC三相380VAC 3-phase 380V	AC三相380VAC 3-phase 380V	AC三相380VAC 3-phase 380V
选配 Optional	<ul style="list-style-type: none"> 四/六重式辊以及辊数数量 Four and six-fold rollers and number of rollers 进出料流水线 Inlet and outflow assembly line 	<ul style="list-style-type: none"> 上下料取料机械手 Loading and unloading manipulator 支撑轮独立调节 The support roller is adjusted by motor independently 	<ul style="list-style-type: none"> 上下料取料机器人 Loading and unloading robot 自动检测平台 Automatic detection platform
<p>更大、特殊尺寸、更快速度可按需求订制 Larger, special size, faster speed can be customized according to demand</p>			

*设备参数根据材质(Material)Q235/屈服强度(Yield strength)235MPa计算。

悟 Wits 旗舰型 智慧数控超矫系列

Wits (Flagship style): Intelligent Servo-CNC Leveling machine series



■ 整平前后对比图

Comparison chart before and after leveling



■ MHTP30系列(Series)

厚度(Thickness): 0.5-2.0mm

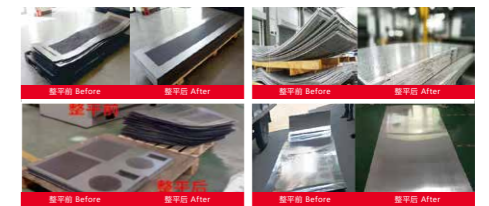
机型 Model	MHTP30-400-23	MHTP30-800-23	MHTP30-1300-23	MHTP30-1600-23
宽度 Width	0-400mm	0-800mm	0-1300mm	0-1600mm
辊径 Roll diameter	30	30	30	30
额定厚度 Rated thickness	0.5-2.0mm	0.5-2.0mm	0.5-2.0mm	0.5-2.0mm
最大厚度 Maximum thickness	4.0mm	4.0mm	4.0mm	4.0mm
辊数 Number of rolls	23	23	23	23
最短工件 Shortest part	60	60	60	60
矫平速度 Leveling speed	0-10m/min	0-10m/min	0-10m/min	0-10m/min
电压 Voltage	AC三相380VAC 3-phase 380V	AC三相380VAC 3-phase 380V	AC三相380VAC 3-phase 380V	AC三相380VAC 3-phase 380V
选配 Optional	<ul style="list-style-type: none"> 四/六重式辊以及辊数数量 Four and six-fold rollers and number of rollers 进出料流水线 Inlet and outflow assembly line 上下料取料机械手 Loading and unloading manipulator 支撑轮独立调节 The support roller is adjusted by motor independently 上下料取料机器人 Loading and unloading robot 自动检测平台 Automatic detection platform 			
<p>更大、特殊尺寸、更快速度可按需求订制 Larger, special size, faster speed can be customized according to demand</p>				

*设备参数根据材质(Material)Q235/屈服强度(Yield strength)235MPa计算。



■ 整平前后对比图

Comparison chart before and after leveling



■ MHTP40系列(Series)

厚度(Thickness): 0.6-3.0mm

机型 Model	MHTP40-400-23	MHTP40-800-23	MHTP40-1300-23	MHTP40-1600-23
宽度 Width	0-400mm	0-800mm	0-1300mm	0-1600mm
辊径 Roll diameter	40	40	40	40
额定厚度 Rated thickness	0.6-3.0mm	0.6-3.0mm	0.6-3.0mm	0.6-3.0mm
最大厚度 Maximum thickness	6.0mm	6.0mm	6.0mm	6.0mm
辊数 Number of rolls	23	23	23	23
最短工件 Shortest part	70	70	70	70
矫平速度 Leveling speed	0-10m/min	0-10m/min	0-10m/min	0-10m/min
电压 Voltage	AC三相380VAC 3-phase 380V	AC三相380VAC 3-phase 380V	AC三相380VAC 3-phase 380V	AC三相380VAC 3-phase 380V
选配 Optional	<ul style="list-style-type: none"> 四/六重式辊以及辊数数量 Four and six-fold rollers and number of rollers 进出料流水线 Inlet and outflow assembly line 上下料取料机械手 Loading and unloading manipulator 支撑轮独立调节 The support roller is adjusted by motor independently 上下料取料机器人 Loading and unloading robot 自动检测平台 Automatic detection platform 			
<p>更大、特殊尺寸、更快速度可按需求订制 Larger, special size, faster speed can be customized according to demand</p>				

*设备参数根据材质(Material)Q235/屈服强度(Yield strength)235MPa计算。

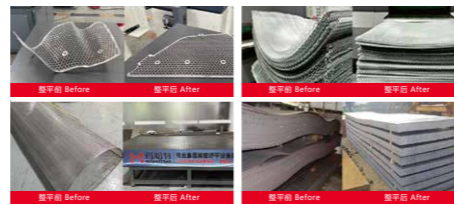
悟 Wits 旗舰型 智慧数控超矫系列

Wits (Flagship style): Intelligent Servo-CNC Leveling machine series



■ 整平前后对比图

Comparison chart before and after leveling



■ MHTP50系列(Series)

厚度(Thickness): 0.8-4.0mm

机型 Model	MHTP50-400-23	MHTP50-800-23	MHTP50-1300-23	MHTP50-1600-23
宽度 Width	0-400mm	0-800mm	0-1300mm	0-1600mm
辊径 Roll diameter	50	50	50	50
额定厚度 Rated thickness	0.8-4.0mm	0.8-4.0mm	0.8-4.0mm	0.8-4.0mm
最大厚度 Maximum thickness	8.0mm	8.0mm	8.0mm	8.0mm
辊数 Number of rolls	23	23	23	23
最短工件 Shortest part	90	90	90	90
矫平速度 Leveling speed	0-10m/min	0-10m/min	0-10m/min	0-10m/min
电压 Voltage	AC三相380VAC 3-phase 380V	AC三相380VAC 3-phase 380V	AC三相380VAC 3-phase 380V	AC三相380VAC 3-phase 380V
选配 Optional	<ul style="list-style-type: none"> 四/六重式辊以及辊数数量 Four and six-fold rollers and number of rollers 上下料取料机械手 Loading and unloading manipulator 上下料取料机器人 Loading and unloading robot 进出料流水线 Inlet and outflow assembly line 支撑轮独立调节 The support roller is adjusted by motor independently 自动检测平台 Automatic detection platform 			

更大、特殊尺寸、更快速度可按需求订制

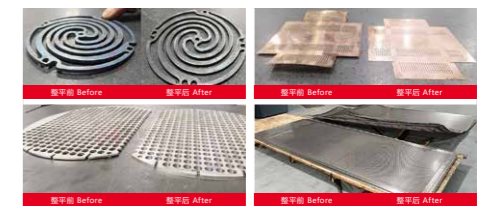
Larger, special size, faster speed can be customized according to demand

*设备参数根据材质(Material)Q235/屈服强度(Yield strength)235MPa计算。



■ 整平前后对比图

Comparison chart before and after leveling



■ MHTP60系列(Series)

厚度(Thickness): 1.0-6.0mm

机型 Model	MHTP60-600-21	MHTP60-1000-21	MHTP60-1300-21	MHTP60-1600-21
宽度 Width	0-600mm	0-1000mm	0-1300mm	0-1600mm
辊径 Roll diameter	60	60	60	60
额定厚度 Rated thickness	1.0-6.0mm	1.0-6.0mm	1.0-6.0mm	1.0-6.0mm
最大厚度 Maximum thickness	12mm	12mm	12mm	12mm
辊数 Number of rolls	21	21	21	21
最短工件 Shortest part	100	100	100	100
矫平速度 Leveling speed	0-10m/min	0-10m/min	0-10m/min	0-10m/min
电压 Voltage	AC三相380VAC 3-phase 380V	AC三相380VAC 3-phase 380V	AC三相380VAC 3-phase 380V	AC三相380VAC 3-phase 380V
选配 Optional	<ul style="list-style-type: none"> 四/六重式辊以及辊数数量 Four and six-fold rollers and number of rollers 上下料取料机械手 Loading and unloading manipulator 上下料取料机器人 Loading and unloading robot 进出料流水线 Inlet and outflow assembly line 支撑轮独立调节 The support roller is adjusted by motor independently 自动检测平台 Automatic detection platform 			

更大、特殊尺寸、更快速度可按需求订制

Larger, special size, faster speed can be customized according to demand

*设备参数根据材质(Material)Q235/屈服强度(Yield strength)235MPa计算。

悟 Wits 旗舰型 智慧数控超矫系列

Wits (Flagship style): Intelligent Servo-CNC Leveling machine series



■ 整平前后对比图

Comparison chart before and after leveling

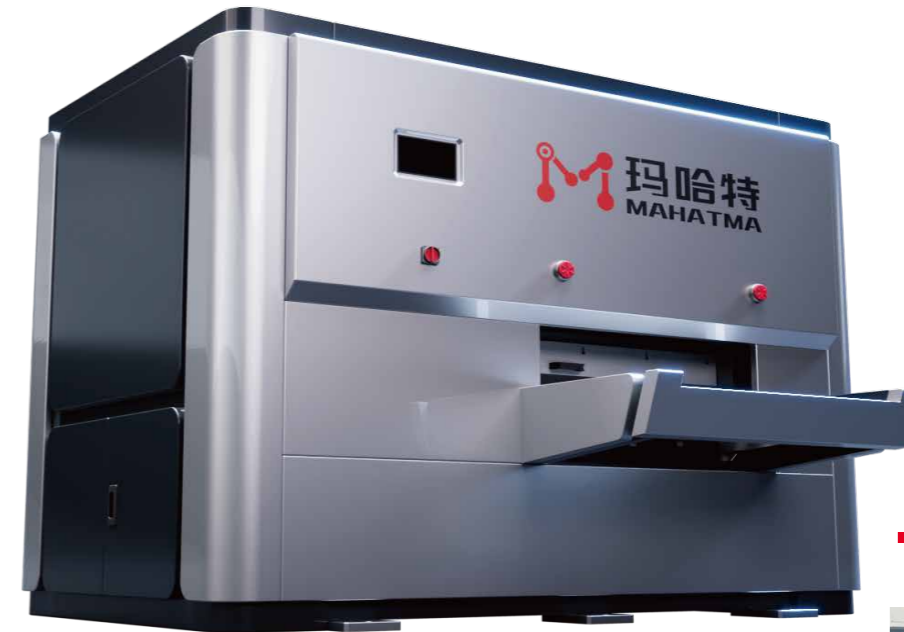


■ MHTP80系列(Series)

厚度(Thickness): 2.0-8.0mm

机型 Model	MHTP80-400-19	MHTP80-800-19	MHTP80-1300-19	MHTP80-1600-19
宽度 Width	0-400mm	0-800mm	0-1300mm	0-1600mm
辊径 Roll diameter	80	80	80	80
额定厚度 Rated thickness	2.0-8.0mm	2.0-8.0mm	2.0-8.0mm	2.0-8.0mm
最大厚度 Maximum thickness	16.0mm	16.0mm	16.0mm	16.0mm
辊数 Number of rolls	19	19	19	19
最短工件 Shortest part	130	130	130	130
矫平速度 Leveling speed	0-10m/min	0-10m/min	0-10m/min	0-10m/min
电压 Voltage	AC三相380VAC 3-phase 380V	AC三相380VAC 3-phase 380V	AC三相380VAC 3-phase 380V	AC三相380VAC 3-phase 380V
选配 Optional	<ul style="list-style-type: none"> 四/六重式辊以及辊数数量 Four and six-fold rollers and number of rollers 进出料流水线 Inlet and outflow assembly line 上下料取料机械手 Loading and unloading manipulator 支撑轮独立调节 The support roller is adjusted by motor independently 上下料取料机器人 Loading and unloading robot 自动检测平台 Automatic detection platform 			
<p>更大、特殊尺寸、更快速度可按需求订制 Larger, special size, faster speed can be customized according to demand</p>				

*设备参数根据材质(Material)Q235/屈服强度(Yield strength)235MPa计算。



■ 整平前后对比图

Comparison chart before and after leveling



■ MHTP100系列(Series)

厚度(Thickness): 3.0-12.0mm

机型 Model	MHTP100-600-19	MHTP100-1000-19	MHTP100-1300-19	MHTP100-1600-19	MHTP100-2100-19
宽度 Width	0-600mm	0-1000mm	0-1300mm	0-1600mm	0-2100mm
辊径 Roll diameter	100	100	100	100	100
额定厚度 Rated thickness	3.0-12.0mm	3.0-12.0mm	3.0-12.0mm	3.0-12.0mm	3.0-12.0mm
最大厚度 Maximum thickness	20.0mm	20.0mm	20.0mm	20.0mm	20.0mm
辊数 Number of rolls	19	19	19	19	19
最短工件 Shortest part	160	160	160	160	160
矫平速度 Leveling speed	0-10m/min	0-10m/min	0-10m/min	0-10m/min	0-10m/min
电压 Voltage	AC三相380VAC 3-phase 380V	AC三相380VAC 3-phase 380V	AC三相380VAC 3-phase 380V	AC三相380VAC 3-phase 380V	AC三相380VAC 3-phase 380V
选配 Optional	<ul style="list-style-type: none"> 四/六重式辊以及辊数数量 Four and six-fold rollers and number of rollers 进出料流水线 Inlet and outflow assembly line 上下料取料机械手 Loading and unloading manipulator 支撑轮独立调节 The support roller is adjusted by motor independently 上下料取料机器人 Loading and unloading robot 自动检测平台 Automatic detection platform 				
<p>更大、特殊尺寸、更快速度可按需求订制 Larger, special size, faster speed can be customized according to demand</p>					

*设备参数根据材质(Material)Q235/屈服强度(Yield strength)235MPa计算。