



国际高端矫平设备智能制造服务商

High-end international leveling equipment intelligent manufacturing service provider

玛哈特集团
MAHATMA GROUP

☎ 400-0898-858

☎ 0769-8630 1265 ✉ mht@gddys.com

🌐 www.mahatma.com.cn

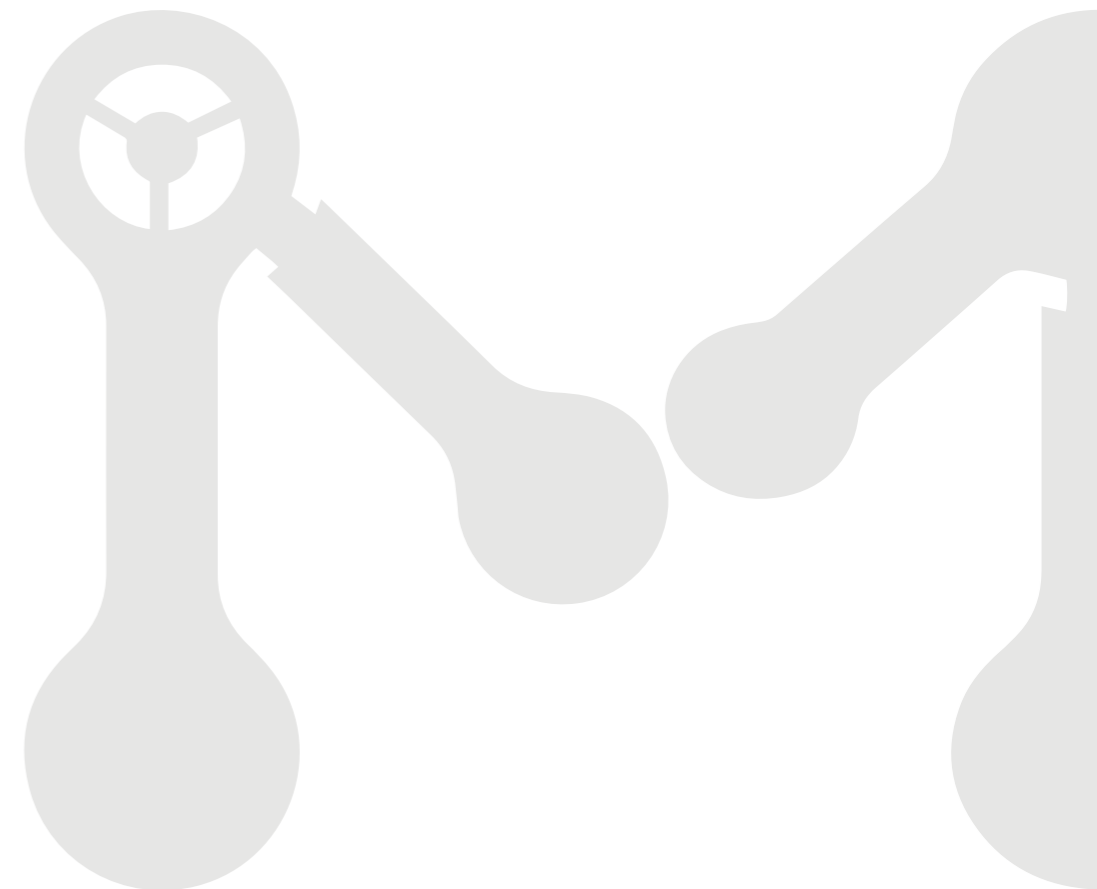
📍 广东省东莞市石碣镇西南嘉应一街3号玛哈特工业园
MAHATMA Industrial Park, No. 3, Jiaying 1st Street, Shijie Town, Dongguan City, Guangdong Province

📍 江西省抚州市高新区大觉山路玛哈特工业园
MAHATMA Industrial Park, Dajue Road, High-tech Zone, Fuzhou City, Jiangxi Province

📍 香港九龙尖沙咀柯士甸路7-9号焕利商业大厦7楼63室
Room 63, 7/F, Woon Lee Commercial Building, 7-9 Austin Ave, Tsim Sha Tsui, Kowloon, Hong Kong



公众号二维码
Official Account



序言

Preface



回首玛哈特集团，
二十余年的探索与积淀，
我们终成全球销量领先的金属矫平机品牌；
当年我们所驾驭的那一叶扁舟，
如今已俨然成为领导行业的航母。
团结与合作，是我们战胜未知困难的关键；
智慧和勇气，是我们战胜苍海深渊的力量。
我们始终坚信，
每一个人的梦想都应该被尊重和承认，
当我们穿越最后一片大浪，
踏上了彼岸的土地，
我们的梦想，也将在这片土地上迸发出更加灿烂的光芒。
我们驾驭愿望的扁舟，不仅给予了我们实现梦想的机会，
更让我们明白，每一个玛哈特人，
都是一个伟大的航海家。
以行胜于言的信念和渴求信志的精神
鼓动创新与智慧编织的风帆
披星斩月，昼夜不息。
.....
过去，现在，未来
每时每刻，牢记使命，继续探索；
谷涵万壑，百尺竿头，更进一步。
快乐、正直、成就、利他、渴望、信念、意志、行动
从点滴做起，做细节做起，从标准做起，构筑和谐的客群关系，
广纳良才，任人为贤，专才专用，组建一流的精英团队，
倾心打造国际一流的矫平设备智造民族品牌。
一切从客户出发、为客户着想、对客户负责、让客户满意；
这是我们永远不变动力。

陈利平

MAHATMA

只有永无止境的追求，才能跨跃时代的巅峰
Only endless pursuit can reach the peak of the times

Looking back at MAHATMA Group,
After more than 20 years of exploration and accumulation,
we have finally become the world's leading metal leveler brand in sales;
the small boat we drove back then,
Now it has become an aircraft carrier leading the industry.
Unity and cooperation are the keys to us overcoming unknown difficulties;
wisdom and courage are our strength to overcome the abyss of the sea.
We always firmly believe that everyone's dreams should be respected and recognized.
When we cross the last big wave and set foot on the land on the other side,
our dreams will shine brighter on this land. Riding the boat of our desires not only gives us the opportunity to
realize our dreams, but also makes us understand that every MAHATMA person is a great navigator.
With the belief that actions speak louder than words and the spirit of thirst for faith, we encourage innovation
and wisdom to weave sails that fly like stars and moons, day and night.
.....
Past, present, Future
At every moment, keep your mission in mind and continue to explore;
the valleys and ravines are as deep as the valleys,
and the pole is full of steps to make further progress.
Happiness, integrity, achievement, altruism, desire, belief, will, action.
Start from scratch, start with details, start with standards, build a harmonious relationship with customers,
recruit talents, appoint talents, use experts exclusively,
form a first-class elite team, and devote ourselves to creating world-class leveling equipment intelligence.
Create a national brand.
Everything starts from the customer, thinks about the customer, is responsible for the customer,
and satisfies the customer; this is our eternal motivation.

集团介绍

Group Introduction



MAHATMA

■ 玛哈特全球智能制造中心

MAHATMA global Intelligent manufacturing center

位于江西抚州国家高新技术开发区，一期占地20000m²，二期占地30000m²，员工200+；研发专家20+。我们拥有先进的生产设施和设备，注重自动化和智能化应用，坚持投资和改进，以提高生产效率和产品质量。

致力于技术进步和创新，为客户提供最优质的产品和服务。

Located in Fuzhou National High tech Development Zone, Jiangxi Province, the first phase covers an area of 20000 square meters and the second phase covers an area of 30000 square meters, with over 200 employees; More than 20 R&D experts. We have advanced production facilities and equipment, focus on automation and intelligent applications, adhere to investment and improvement, to improve production efficiency and product quality.

Dedicated to technological progress and innovation, providing customers with the highest quality products and services.



■ 集团简介

Group profile

玛哈特以助力智能制造国产替代与产业升级为使命，自2003年成立以来，在矫平机、自动化产线、智慧系统及配套搭载设备等前沿创新领域，不断地革新技术产品与解决方案。

是一家集研发、生产、销售、服务四位一体的钣金零件矫平智造解决方案服务商。是具有全球竞争力的国际高端矫平设备制造领导品牌，同时也是国家高新技术及专精特新企业。

玛哈特作为智慧超级矫平技术设备的品类开创者，实现了从低端到高端矫平设备的全品类覆盖，且二十余年的行业积累与技术创新，我们的制造工艺与矫平精度均已达到国际最先进水平。

MAHATMA mission is to assist in the domestic substitution and industrial upgrading of intelligent manufacturing. Since its establishment in 2003, it has continuously innovated its technological products and solutions in cutting-edge innovation fields such as leveling machines, automated production lines, smart systems, and supporting equipment.

We are a sheet metal parts straightening intelligent manufacturing solution service provider that integrates research and development, production, sales, and service. It is a leading international high-end leveling equipment intelligent manufacturing brand with global competitiveness, as well as a national high-tech and specialized new enterprise.

As the pioneer of intelligent super leveling technology equipment, MAHATMA has achieved full category coverage of leveling equipment from low-end to high-end. With more than 20 years of industry accumulation and technological innovation, our manufacturing process and leveling accuracy have reached the most advanced international level.

2003年

公司成立
Found

15000+

客户案例
Cases

50000m²

生产基地
Plants

10家

分公司
Branches

350+

公司员工
Employee

20000m²

研发中心
R&D Center

■ 玛哈特全球研发实验中心

MAHATMA global R&D center

位于东莞，占地约20000m²，员工150+，研发专家30+。我们集设计、研发、代工、销售、展厅于一体，投入巨大资源和人力，聚集行业顶尖专家和科学家，致力于智慧超矫技术的应用和发展。并携手清华大学等国内外顶尖高校合作打造产学研基地，继续探索技术前沿，开发高效、精准、安全、节能的超矫技术，为产业升级制造做出贡献。

创新方法和工具。我们将致力于开发高效、精准、安全、节能的超矫技术，应用于钣金、工业、交通、能源等多个领域，为人类社会的可持续发展做出贡献。

Located in Dongguan, covering an area of approximately 15000 square meters, with over 150 employees and 30 research and development experts. We Integrating design, research and development, OEM, sales, and exhibition halls, investing huge resources and manpower, Gathering top-notch experts and scientists in the industry, dedicated to the application and development of intelligent super correction technology. And collaborate with top domestic and foreign universities such as Tsinghua University to build industry university research bases, continuing to explore At the forefront of technology, we aim to develop efficient, precise, safe, and energy-saving super straightening technologies for industrial upgrading Make contributions to manufacturing.

Innovative methods and tools. We will be committed to developing efficient, precise, safe, and energy-saving super straightening technologies, which will be applied in multiple fields such as sheet metal, industry, transportation, and energy Domain contributes to the sustainable development of human society.



奋进历程

Historical process

我们将继续前进，继续挑战自己，为客户提供更卓越的产品和服务，为行业的发展做出更大的贡献。我们相信，未来的征程将会更加精彩，我们将继续抒写华丽的篇章。

We will continue to move forward, continue to challenge ourselves, provide customers with more excellent products and services, and make greater contributions to the development of the industry. We believe that the journey ahead will be even more exciting and we will continue to write gorgeous chapters.

2003年，驾驭愿景的方舟，成立东莞石碣永圣机械设备经销部。

In 2003, driving the dream of vision, Dongguan Shijie Yongsheng Machinery Equipment Sales Department was established.

2003

2005

2005年，规模扩大，成立东莞市永圣机械设备有限公司，开始自主研发矫平机及各种非标自动化设备。

In 2005, the scale was expanded and Dongguan Yongsheng Machinery Equipment Co., Ltd. was established and began to independently develop levelers and various non-standard automation equipment.

2006年，建立矫平机、冲床周边设备、非标自动化、机械手/机器人等4大事业部，并大力拓展海外业务。

In 2006, four major business divisions were established, including leveling machines, punch press peripheral equipment, non-standard automation, and manipulators/robots, and vigorously expanded overseas business.

2006

2008

2008年，更名为：广东大永圣科技有限公司；并通过了ISO9001质量管理体系、欧盟CE认证。销售内外并举。

In 2008, the name was changed to: Guangdong Dayong Sheng Technology Co., Ltd.; and passed the ISO9001 quality management system, EU CE certification. Sales are both internal and external.

2015年，斥资5000万，在江西抚州倾力打造国际化智能制造生产基地。同年，玛哈特高端品牌诞生；

In 2015, it invested 50 million yuan to build an international intelligent manufacturing production base in Fuzhou, Jiangxi. In the same year, the MAHATMA high-end brand was born;

2015

2018年，信誉常青，先后被评为“信用培育单位”“中国行业引领品牌”“重合同守信用单位”“中国著名品牌”等称号。同年，成为广东华南理工大学等高校教学实习基地指定单位。

In 2018, the company's reputation remains evergreen, and it has been rated as "Credit Cultivation Unit", "China's Industry Leading Brand", "Contract-abiding and Trustworthy Unit", "China's Famous Brand" and other titles. In the same year, it became the designated unit for the teaching practice base of Guangdong South China University of Technology and other universities.

2018

2021年，建立玛哈特激光，全面落地自动化智慧产线集成落地，形成矫平机+智慧产线业务双头并进；

In 2021, MAHATMA Laser will be established to fully implement the integration of automated smart production lines, forming a two-headed development of leveler + smart production line business;

2021

2023年，玛哈特集团品牌全新升级，向国际化高端矫平设备智造领导品牌全速迈进。

In 2023, the MAHATMA Group brand will be completely upgraded, moving at full speed towards a leading brand in the intelligent manufacturing of international high-end leveling equipment.

2023

2022

2022年，玛哈特全球化业务持续增长，成为行业销量领先的金属矫平设备领导品牌。

In 2022, MAHATMA's global business will continue to grow and become the leading brand of metal leveling equipment with leading sales in the industry.

2019

2019年，创新科技，获“广东省专精特新企业”称号，同时，开始布局及建立玛哈特昆山、青岛、重庆、宁波、长沙等地营销服务中心；

In 2019, innovative technology won the title of "Guangdong Province Specialized New Enterprise". At the same time, it began to layout and establish Mahatma marketing service centers in Kunshan, Qingdao, Chongqing, Ningbo, Changsha and other places;

2017

2017年，多元发展，组建广东玛哈特智能科技有限公司，并将研发中心设立于东莞。同年，荣获国家高新科技技术企业，且公司累计获得上百项实用新型专利以及多项发明专利证书。

In 2017, through diversified development, Guangdong MAHATMA Intelligent Technology Co., Ltd. was established and the R&D center was established in Dongguan. In the same year, it was awarded the title of National High-tech Enterprise, and the company has obtained hundreds of utility model patents and multiple invention patent certificates.



使命 Mission

智慧超矫，志惠全球
Super wisdom, benefiting the world



愿景 Vision

全球高端矫平设备领导品牌
The world's leading brand of high-end leveling equipment



价值观 Values

正知、快乐、成就、利他、光明
Right knowledge, happiness, achievement, altruism, bright



经营理念 Business philosophy

知行合一、至诚至信、精益求精、共生共荣
Unity of knowledge and action, sincerity and trust, excellence, symbiosis and common prosperity



服务宗旨 Service purposes

从客户出发、为客户着想、对客户负责、让客户满意
Start from the customer, consider the customer, be responsible to the customer, and satisfy the customer



集团精神 Group spirit

渴望、信念、意志、行动
desire, belief, will, action



集团口号 Group slogan

玛哈特矫平机——矫平天下不平事
MAHATMA leveling machine- Let things go back to right way

集团旗下营销网点

Group subsidiary companies

28个

国外营销网点

Domestic marketing network



荣誉资质与专利

Honorary qualifications
and patents

玛哈特二十余年的创新能力和技术实力，累计申请与荣获150余项国家专利与相关资质。

With more than 20 years of innovative capabilities and technical strength, MAHATMA has applied for and won more than 150 national patents and related qualifications.



企业ISO认证
Wisdom OS intelligent operating system

ISO标准认证提供的证书是一个很好的指标，表明这个企业是认真、负责和专业的，并且正在不断寻找改善企业的方法，这将使这个企业成为更好的投资对象。

The certificate provided by ISO standard certification is a good indicator that the enterprise is serious, responsible and professional, and is constantly looking for ways to improve the enterprise, which will make the enterprise a better investment object.



欧盟CE认证
Wisdom OS intelligent operating system

“Ce”标志是一种安全认证标志，被视为制造商打开并进入欧洲市场的护照。

The "Ce" mark is a safety certification mark that is regarded as a manufacturer's passport to open and enter the European market.



测量管理体系认证证书
Wisdom OS intelligent operating system

企业获得测量管理体系认证证书，就是得到了政府对企业满足ISO10012国际标准的一种承认，得到了国际和国内外市场对企业测量管理能力的一种认可。

When an enterprise obtains the measurement management system certification, it is a recognition from the government that the enterprise meets the ISO10012 international standard, and a recognition of the enterprise's measurement management capabilities from international and domestic markets.



计算机软件著作
Wisdom OS intelligent operating system

软件著作权是“高新技术企业”、“软件企业”“软件产品”认定的重要条件。

Software copyright is an important condition for the identification of "high-tech enterprises", "software enterprises" and "software products".

截止到2024年3月

Until Mar. 2024

150+项
实用新型专利
Utility model patents

50+项
发明专利
Patent

30+项
外观专利
Appearance patent

>2008年 通过了ISO9001质量管理体系、欧盟CE认证等
>In 2008, it passed the ISO9001 quality management system, EU CE certification, etc.

>2017年 获批国家高新技术企业
>In 2017, it was approved as a national high-tech enterprise

>2019年 获“广东省专精特新企业”称号
>In 2019, won the title of "Guangdong Province Specialized and New Enterprise"



集团团队

Group team

专家团队

Expert team

玛哈特技术团队是由一群具备专业技术知识和多年实践经验的国内外专家人员组成，他们致力于为客户解决实际问题，提供新一代超矫技术支持，推动产业创新。

The MAHATMA technical team is composed of a group of domestic and foreign experts with professional technical knowledge and many years of practical experience. They are committed to solving practical problems for customers, providing new generation supercorrection technical support, and promoting industrial innovation.



矫平天下不平事 Let things go back right way



团队风采
Team style

Company activities are organized every year to enhance cohesion among employees and improve work efficiency. Through these activities, employees can better understand the company culture, enhance mutual understanding, and at the same time be better integrated into the company family. Let employees have a pleasant time after work.



生产规模

Production scale



国内外展会

Domestic and foreign exhibitions

每年定期参加世界展会,尤其是能够凭借自主研发的创新科技屡次成为展会的焦点,公司实力和创新能力极大认可。通过展示自主研发的创新科技,提高了公司的知名度,还能够吸引更多的合作伙伴和客户。为行业的发展做出更大的贡献。

We regularly participate in world exhibitions every year, especially our ability to rely on our independently developed innovative technologies to become the focus of the exhibition many times, which is a great recognition of the company's strength and innovation capabilities. By displaying independently developed innovative technologies, the company's visibility is enhanced and it can also attract more partners and customers. Make greater contributions to the development of the industry.



社会责任与公益活动

Social Responsibility and
Public Welfare Activities



玛哈特集团董事长-饶勇平热衷于慈善公益事业，曾经十年间与展能团队建43所学校，让那些留守儿童得以学习。

在此期间董事长奉献于各种公益事件，弘扬慈善文化，倡导奉献爱心。我们相信“没有一个冬天不可逾越，没有一个春天不会来临”，每一束光芒汇聚起来，就是灿烂而又力量的春天。

Rao Yongping, chairman of MAHATMA Group, is keen on charity and public welfare. In the past ten years, he and the development team have built 43 schools so that left-behind children can study.

During this period, the chairman devoted himself to various public welfare events, promoted charity culture, and advocated dedication of love. We believe that "there is no winter that is insurmountable, and there is no spring that will not come." When every ray of light comes together, it is a brilliant and powerful spring.



什么是辊式矫平

What is leveling

辊式矫平是获得高精度平整零件、板材或带料的一种简单快速的加工方法。比如，在过去，矫平只能靠富有经验的老工人进行。而对于辊式矫平，任何人都能快速方便地掌握加工方法。

采用辊式矫平时，一块板材将先后经过连续多次的交变弯曲。从辊式矫平机的入口至出口，交错排列着各组矫平辊。这样，在两个相对的矫平辊中始终有一个辊为下压辊。从第一个矫平辊至出口处，交变弯曲程度逐步减弱。弯曲过程类似一个逐步减弱的正弦曲线。通过弹塑性交错弯曲和不断减弱的变形量，板材将变得平整，更重要的是消除了应力并最终将其矫平！

矫平后直接进行后续加工，无需再费时费力的返工。所以说辊式矫平就是把材料本身内应力释放达到平面度的一个过程！简称“消除内应力，矫平平面度！”

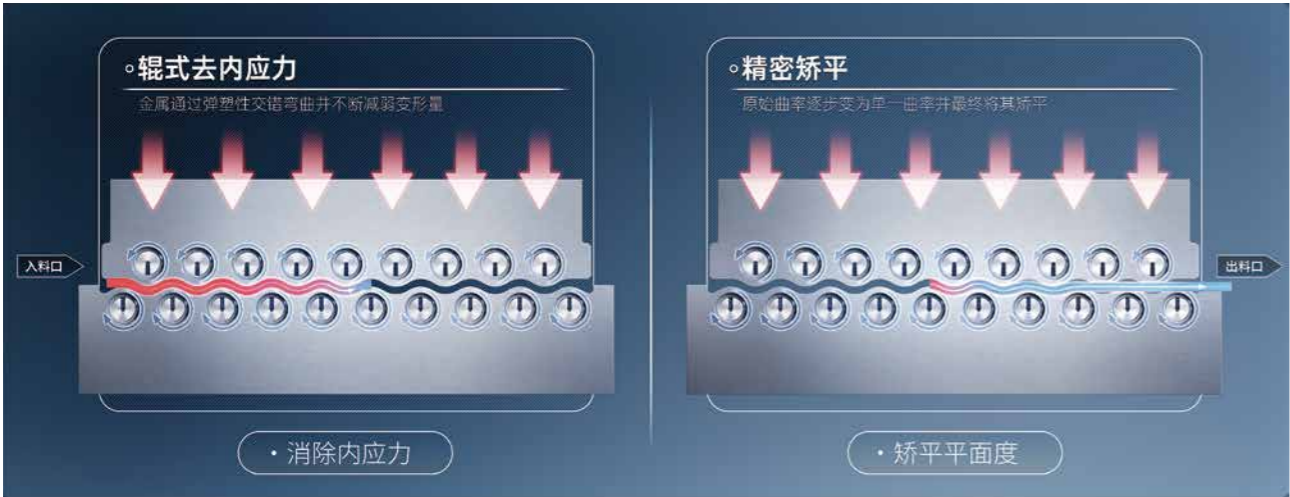
Roller leveling is a simple and fast processing method for obtaining high-precision flat parts, plates, or strips.For example, in the past, leveling could only be carried out by experienced and experienced workers. For roller leveling, anyone can quickly and conveniently master the processing method.

By using roller leveling, a plate will undergo multiple consecutive alternating bends. From the inlet to the outlet of the roller leveler, each group of leveling rollers is arranged in a staggered manner. In this way, there is always one roller in the two opposite leveling rollers that is the down pressing roller. From the first leveling roller to the outlet, the alternating bending degree gradually weakens. The bending process is similar to a gradually weakening Sine wave. Through elastic-plastic staggered bending and continuously decreasing deformation, the sheet will become flat, and more importantly, stress is eliminated and ultimately leveled!

After leveling, direct subsequent processing is carried out without the need for time-consuming and laborious rework. So roller leveling is a process of releasing the internal stress of the material itself to flatness! Abbreviated as "eliminating internal stress, leveling flatness! "

“只有致力于创新的人才会真正地发现矫平技术的未来”

"Only those committed to innovation will truly discover the future of leveling technology."

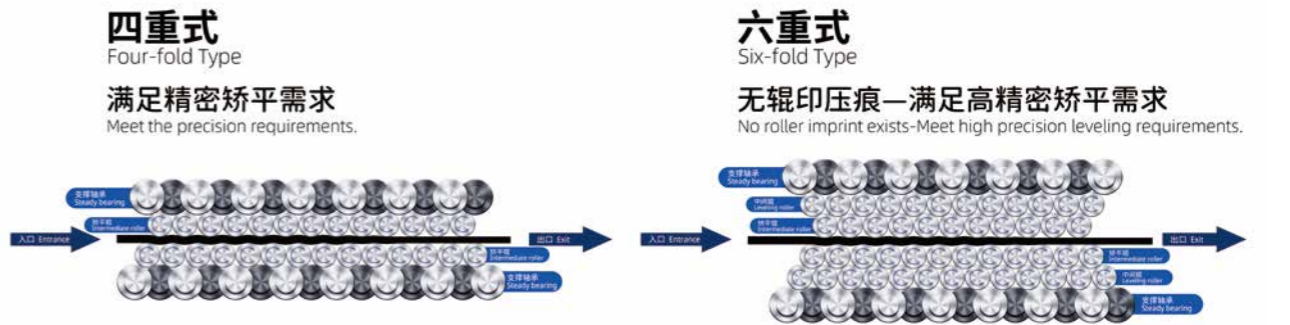


结构介绍

Structure introduction

辊式矫平有二重、四重、六重结构，随着重数的增加，矫平效果也更加精密，中间辊加上下支撑保证辊的不可压缩性，完美的降低了上下矫平辊之间的空白空隙，利用材料的“包辛格效应”对板材多次反复弯曲，变弯曲的强度往出口处逐渐减小，随着矫平辊的数量增多，交变弯曲次数也同样增加使多种原始曲率逐步变为单一曲率，并最终将其矫平，达到工艺要求的平整精度。

The roll leveling has a double, four and six structure. With the increase of the weight, the leveling effect is more precise. The middle roll and the lower support ensure the Incompressibility of the roll, which perfectly reduces the gap between the upper and lower leveling rolls. The plate is repeatedly bent by using the "Bauschinger effect" of the material, and the bending strength gradually decreases toward the exit. With the increase of the number of leveling rolls, The number of alternating bends also increases, gradually transforming various original curvatures into a single curvature, and ultimately leveling them to achieve the required flatness accuracy in the process.



四/六重式辊(原理图)

Four/six-fold rollers (principle diagram)

四重式性能与特点

Performances and features of Four layers type

- 校平辊受力分布均匀
- 结构刚性好，变形小，校平精度高
- 校平板表面校好，传动平稳，噪音低
- 适用于碳钢板，不锈钢板

- Uniform force distribution of leveling rollers
- Good structure rigidity, small deformation, high leveling accuracy
- The surface quality of leveling plate is good, the transmission is stable, and the noise is low

六重式性能与特点

Performances and features of Six Layers type

- 校平辊受力分布均匀、排泄杂物
- 结构刚性好，变形小，校平精度高
- 校平板表面质量好，传动平稳，噪音低，无辊压痕
- 单面分三层辊:支撑轴承，中间辊，矫平辊
- 适用于铜板，铝板，不锈钢板等表面要求高的金属材料

- Uniform force distribution of leveling rollers
- Good structure rigidity, small deformation, high leveling accuracy
- The surface quality of the leveling plate is good, the transmission is stable, the noise is low, and there is no roller indentation
- Single-sided three-layer roller: support bearing, intermediate

产品体系

Product Series

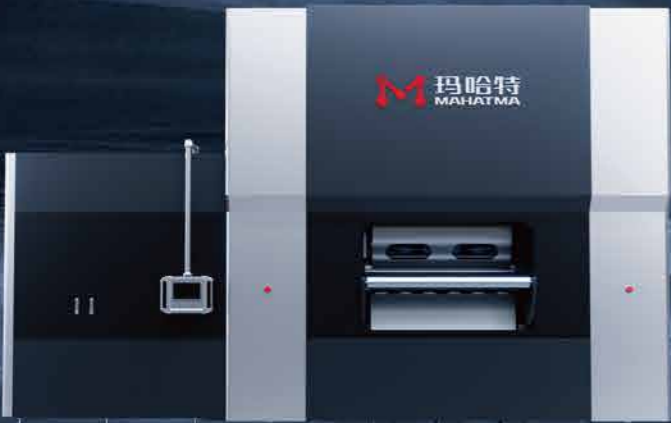
矫平天下不平事
Let things go back right way

用全新智慧超矫技术重构工业机械制造相关行业
Reconstructing industrial machinery manufacturing-related industries
with new smart super-correction technology

御 Royal尊贵型

伺服液压高精度矫平系列

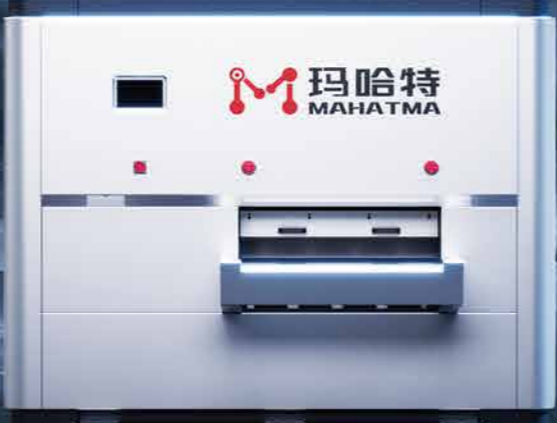
Servo hydraulic high precision leveling machine series



悟Wits 旗舰型

高端智慧数控超矫系列

Intelligent Servo-CNC Leveling machine series



慧Mastery 豪华型

智慧数控精密矫平系列

Intelligent CNC Leveling machine series



渺 Vague 基础型

二四重普通矫平系列

Two/four layers leveling machine series



自动化智慧工厂

Automated smart factory

自动化智慧工厂是矫平自动化智能制造的一站式解决方案，是一个集成了自动化技术、信息技术、人工智能和物联网技术的现代化生产线，我们可以提供从设计、集成到实施的全套服务，帮助企业构建高效、灵活的智能生产线，实现从原材料到成品的无缝连接。该解决方案涵盖了从自动开卷矫平送料、自动剪切和冲压、激光下料、自动收料和上料、去毛料、精密矫平与自动检测平面度、自动折弯、焊接和装配、喷涂到智能监控和维护等各个环节，通过智能数字化工厂实现生产过程的优化和决策支持，进而达到提高生产效率、降低成本、提升产品质量等目的，是现代工业对于智能制造和工业4.0的理想选择。

The automated smart factory is a one-stop solution for leveling automated smart manufacturing. It is a modern production line that integrates automation technology, information technology, artificial intelligence and Internet of Things technology. We can provide a full set of services from design, integration to implementation to help Enterprises build efficient and flexible intelligent production lines to achieve seamless connections from raw materials to finished products. The solution covers everything from automatic uncoiling, leveling and feeding, automatic shearing and stamping, laser blanking, automatic collecting and loading, wool removal, precision leveling and automatic flatness detection, automatic bending, welding and assembly, spraying In all aspects, including intelligent monitoring and maintenance, the optimization of the production process and decision support can be achieved through intelligent digital factories, thereby improving production efficiency, reducing costs, and improving product quality. It is an ideal choice for modern industry for intelligent manufacturing and Industry 4.0.



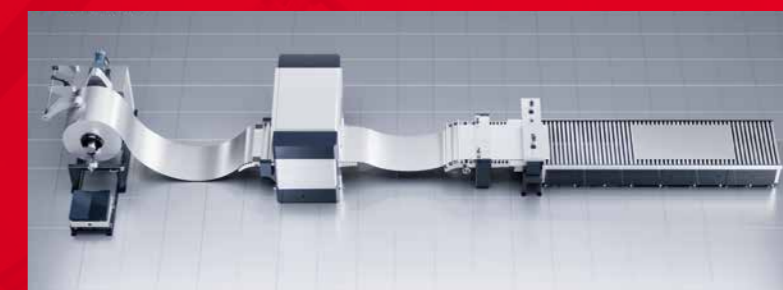
高精度自动开卷矫平冲压线

High-precision automatic uncoiling, leveling and stamping line



自动矫平检测线

Automatic detection line



高精度自动开卷矫平剪切线

High-precision automatic uncoiling, leveling and shearing line



全自动成型线

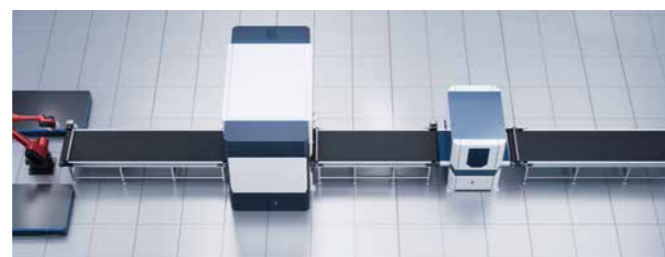
(含上料、矫平、送料、剪切、折弯、焊接等)

high-precision uncoiling, leveling, feeding, shearing, bending and welding



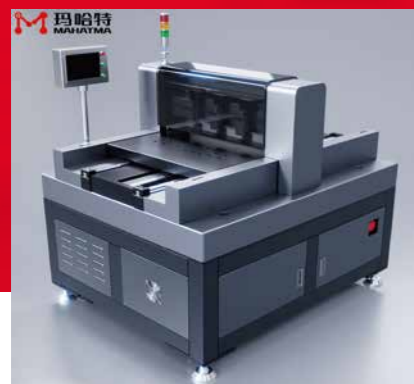
激光卷料落料线

Laser coil blanking line



矫平去毛刺自动化生产线

Leveling and deburring automated production line



自动平面度检测仪

Automatic flatness detector

技术创新与突破

Technological innovation
and breakthroughs

智慧超级矫平技术

Smart super leveling technology

全球首创 掌握下一代矫平技术

World's first
Master the next generation of leveling technology

全智能自动化无人操作

Fully intelligent automated unmanned operation

我们致力于技术创新和突破，在以董事长为首的研发团队的多年的努力和技术沉淀下，我们成功研发了行业领先的智慧超级矫平技术。

We are committed to technological innovation and breakthroughs. With years of hard work and technological accumulation by the R&D team headed by the chairman, we have successfully developed industry-leading smart super leveling technology.

智慧超级矫平技术

Smart super leveling technology

该技术通过先进的控制系统和矫平算法，实现高效的实时控制和自动调整，提高矫平效果和稳定性。采用激光三维检测技术和图像处理算法，实时监测和识别表面缺陷，准确评估矫平效果并修正矫平参数。我们还通过创新材料和工艺，优化矫平辊轮的设计和耐磨性，提高矫平效果和制造效率。这些突破使得我们的智慧超级矫平技术在市场上得到广泛认可。我们将持续追求技术进步，为客户提供高品质、智能化的矫平解决方案。

This technology uses advanced control systems and leveling algorithms to achieve efficient real-time control and automatic adjustment, improving the leveling effect and stability. Laser three-dimensional detection technology and image processing algorithms are used to monitor and identify surface defects in real time, accurately evaluate the leveling effect and correct the leveling parameters. We also optimize the design and wear resistance of the leveling rollers through innovative materials and processes to improve the leveling effect and manufacturing efficiency. These breakthroughs have made our smart super leveling technology widely recognized in the market. We will continue to pursue technological progress and provide customers with high-quality, intelligent leveling solutions.

智慧超矫的三个维度

Three dimensions of wisdom and super correction



更透彻的掌控
More thorough control

全自动的检测系统可以自主检测零件的偏差范围，智慧矫平设备联动提取实时数据进行精准矫正，以及远程监控设备可以告知故障发生的时间、地点及低效点，从而实现更智慧的服务供给。

The fully automatic detection system can independently detect the deviation range of parts, the smart leveling equipment can link to extract real-time data for precise correction, and the remote monitoring equipment can inform the time, location and inefficiency points of faults, thereby achieving smarter service provision.



更广泛的兼容
Wider compatibility

具有智慧数控控制系统的设备可以自主适配大多数传统产线，无缝结合，真正做到互通互联，产线升级先矫这一步。

Equipment with intelligent CNC control systems can independently adapt to most traditional production lines and integrate seamlessly to truly achieve interoperability and interconnection. This step must be corrected first when upgrading production lines.



更深入的智慧
Deeper wisdom

设备中的传感器、控制器、变频器以及智能屏幕、数字控制和分析工具自动监控矫平精度的双向流动。

Sensors, controllers, frequency converters as well as smart screens, digital control and analysis tools in the equipment automatically monitor the two-way flow of leveling accuracy.



研发成果与专利

R&D achievements
and patents

自主知识产权 Independent intellectual property rights

打破国外技术垄断 Breaking foreign technology monopoly

全面掌握高端数控矫平设备的先进技术

Comprehensively master the advanced technology of high-end CNC leveling equipment

Wisdom OS 智能操作系统
Wisdom OS intelligent operating system

Clean CS 自动辊盒抽出清洁系统
Clean CS automatic roll box extraction cleaning system

Level DS 自动平面检测系统
Level DS automatic plane detection system

RBCS远程控制系统
RBCS remote control system

我们在矫平机的自动化控制、智慧超矫算法、表面缺陷检测、制造工艺等方面进行了深入的研究和创新。这些研发成果和专利不仅体现了我们在技术领域的创新能力，还证明了我们在行业内作为领导品牌的技术实力和竞争优势。

We have conducted in-depth research and innovation in the automatic control of leveling machines, intelligent super-straightening algorithms, surface defect detection, and manufacturing processes. These R&D achievements and patents not only reflect our innovation capabilities in the technical field, but also prove our technical strength and competitive advantages as a leading brand in the industry.



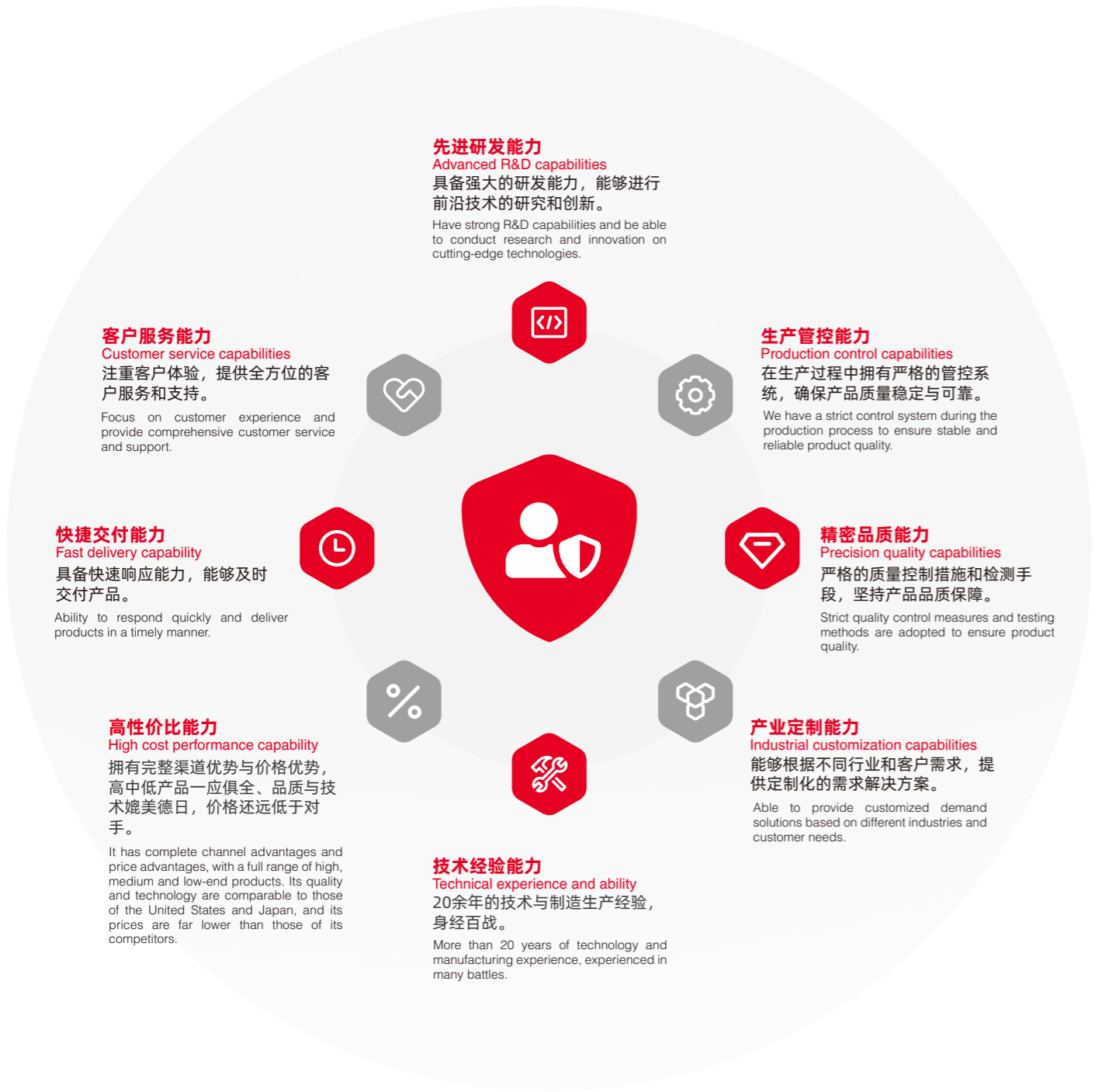
Wisdom OS 智能操作系统
Wisdom OS intelligent operating system

Wisdom OS智能操作系统是专为控制和管理矫平机而设计的一种具备自主学习和优化功能的智能操作系统。该系统集成了玛哈特的智慧超矫技术，拥有多项关键功能，包括自主学习和优化、智能化控制、数据监控和报告、远程访问和控制、误操作识别和预警以及生产线效率优化等。通过收集和分析生产数据，Wisdom OS能够自动识别潜在问题，并提供改进措施以提高生产效率和产品质量。

Wisdom OS intelligent operating system is an intelligent operating system with independent learning and optimization functions specially designed for controlling and managing leveling machines. The system integrates MAHATMA's smart super-correction technology and has a number of key functions, including autonomous learning and optimization, intelligent control, data monitoring and reporting, remote access and control, misoperation identification and early warning, and production line efficiency optimization. By collecting and analyzing production data, Wisdom OS can automatically identify potential problems and provide improvement measures to improve production efficiency and product quality.

8A级品牌保障体系

8A level brand guarantee system



可持续发展与社会责任

Sustainable development and social responsibility

■ 环保政策与实践

Environmental policy and practice



改善现场服务交付

Improve field service delivery

更好地调度现场人员，缩短出行距离；采用远程控制支持技术，免除实地到访；提升零件识别，减少废件和退换；高一次性修复率，减少停工时间、辊盒可抽出清洁，减少设备停机时长。

Better dispatch of on-site personnel and shorten travel distance; use of remote control support technology to eliminate on-site visits; improve part identification, reduce waste parts and returns; high one-time repair rate, reduce downtime, the roller box can be extracted for cleaning, reducing equipment Length of downtime.



智能备件管理

Intelligent spare parts management

改进备件预测，减少特殊交付；重新规划备件供应链和仓储路线，最大限度减少运输和库存；引入零件订购服务水平模型，鼓励更多可持续订购；重新规划最后一英里交付，杜绝不必要的交付和库存。

Improve spare parts forecasting to reduce special deliveries; re-plan the spare parts supply chain and warehousing routes to minimize transportation and inventory; introduce a parts ordering service level model to encourage more sustainable ordering; re-plan last-mile delivery to eliminate unnecessary deliveries and inventory.



优化设备运行

Optimize equipment operation

引入预测性维护计划，延长资产使用寿命；引入循环经济提议，遵守处置指南；更好地利用远程监控信息，优化能耗。

Introduce predictive maintenance plans to extend asset service life; introduce circular economy proposals and comply with disposal guidelines; make better use of remote monitoring information to optimize energy consumption.



创新服务业务模型

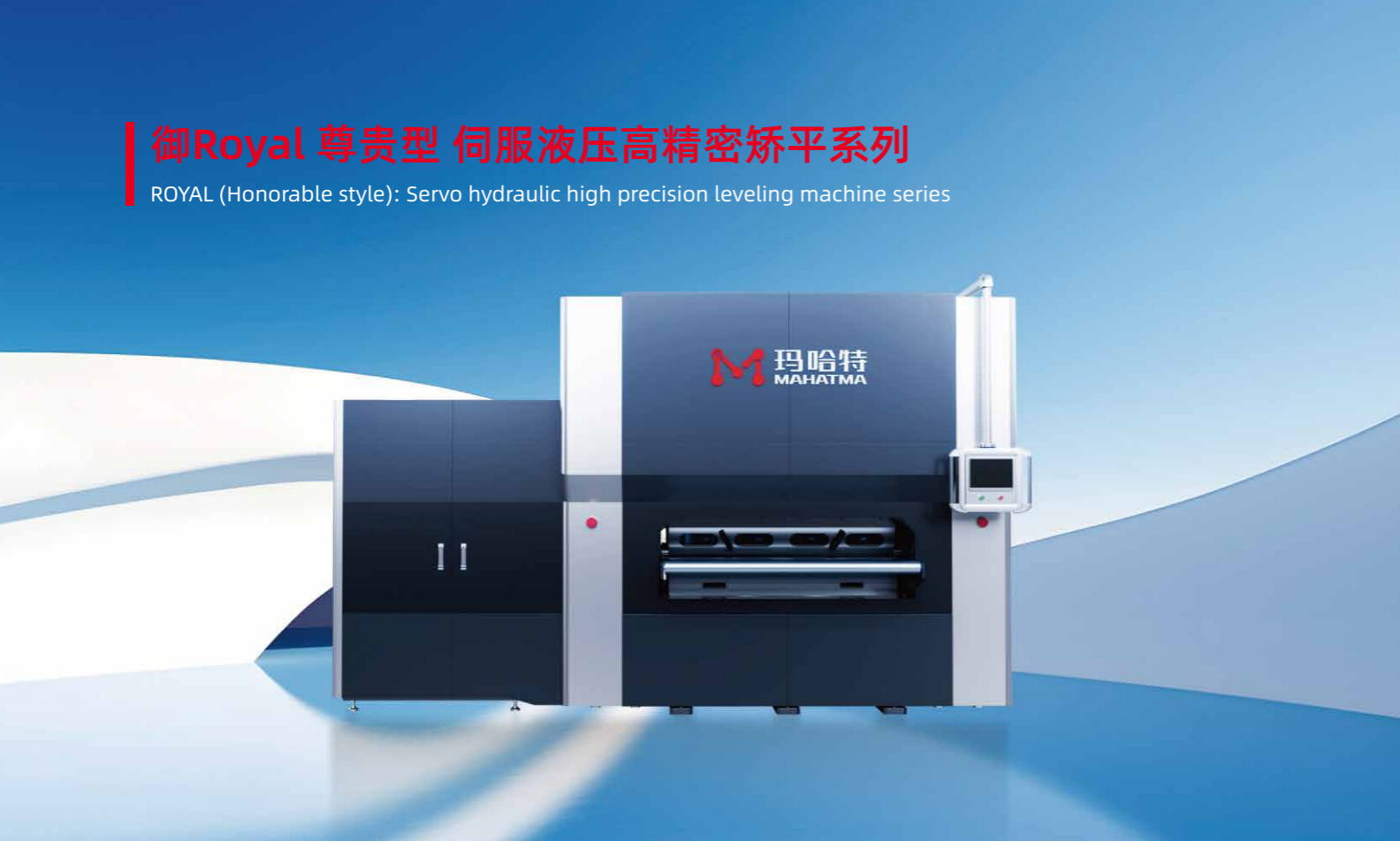
Innovative service business model

引入秉持绿色价值主张的新服务业务模式，发掘提高收入和差异化的新可能性，引入结果导向型服务模型，激励减少二氧化碳排放；营销推广“绿色服务”合约和产品。

Introduce new service business models that adhere to green value propositions, explore new possibilities for increasing revenue and differentiation, introduce result-oriented service models to incentivize the reduction of carbon dioxide emissions, and market and promote "green service" contracts and products.

御Royal 尊贵型 伺服液压高精密矫平系列

ROYAL (Honorable style): Servo hydraulic high precision leveling machine series



该系列机型采用德国进口液压和数控技术，结合了伺服控制系统的精确性和液压系统的强大力量。使其在处理大型厚型及高精度要求的材料矫平方面表现更出色！保持恒定的矫正辊间隙，减少变形，保证稳定矫正效果。平行多辊、液压锁紧和密集支撑技术满足高精密矫平需求。紧凑设计，占地小，高加工精度，静音运转。与进口设备媲美，低成本且反应快。快速准确监测部件平整度，精度微米级。

适用于大型厚板钢板、有色金属、镜面板料、钣金、激光切割件和火焰切割件的精细表面要求四重或六重组辊结构提供均匀辊受力和高刚性，不留下辊压痕迹，可解决一般矫平难以解决的问题，适用性更广。液压矫平机的这些优势使其成为新能源、军工、重型机械、汽车卡车、建筑、船舶、航空、金属加工等要求高精度矫平的行业的理想选择。

The series of models adopts hydraulic and CNC technology imported from Germany, combining the accuracy of the servo control system and the powerful power of the hydraulic system. This makes it perform even better in processing large, thick and high-precision material leveling! Maintain a constant correction roller gap to reduce deformation and ensure stable correction effects. Parallel multi-rollers, hydraulic locking and dense support technology meet high-precision leveling needs. Compact design, small footprint, high processing accuracy, and silent operation. Comparable with imported equipment, low cost and quick response. Quickly and accurately monitor component flatness with micron-level accuracy.

Suitable for fine surface requirements of large thick steel plates, non-ferrous metals, mirror sheets, sheet metal, laser cutting parts and flame cutting parts. The quadruple or sixfold roller structure provides uniform roller force and high rigidity without leaving any rolling marks. , can solve problems that are difficult to solve with general leveling, and has wider applicability. These advantages of hydraulic levelers make them an ideal choice for industries that require high-precision leveling, such as new energy, military industry, heavy machinery, automobiles and trucks, construction, ships, aviation, and metal processing.

尖端性能	最大矫平宽度6m、最大矫平厚度100mm，最高精度可达0.01mm
榫卯机身	全包围机身，承载力超强，节省空间，全面提升稳定性与刚性；杜绝变形，稳定耐用
颠覆传统	伺服与液压混合驱动，精准的力量控制与定位，高力矩和压力，精细可控，快速响应
智慧标杆	新一代智慧超矫控制系统；全自动无人化、实时监控和调整，远程控制、自动计数等
合金辊组	密布式排列全支撑结构，增强刚性，提高精度，合金钢构造，提供长效稳定的工作性能
强劲动力	液压结构，拥有强大而又均匀的矫平力量，能够轻松应对各种高品质金属材料的矫平需求
节能环保	与传统液压相比，节省70%能耗，绿色环保，减少材料损耗，提高生产效率，且维护成本更低
兼容性强	能适应制造业各种场景，可以处理从薄到厚，从软到硬的各种材料，具有超高的适用性
防塌角功能	采用动态伺服液压补偿技术，预防塌角，提高矫平精度和材料的表面质量

Peak performance	The maximum leveling width is 6m, the maximum leveling thickness is 100mm, and the maximum accuracy can reach 0.01mm;
Mortise and tenon fuselage	Fully encircling the fuselage, it has super load-bearing capacity, saves space, and comprehensively improves stability and rigidity; it eliminates deformation and is stable and durable;
Subvert tradition	Servo and hydraulic hybrid drive, precise force control and positioning, high torque and pressure, fine controllability, quick response;
Smart Benchmark	A new generation of intelligent super-correction control system; fully automatic and unmanned, real-time monitoring and adjustment, remote control, automatic counting, etc;
Alloy roller set	Densely arranged full support structure enhances rigidity and improves precision. Alloy steel structure provides long-term and stable working performance;
Strong power	The hydraulic structure has strong and uniform leveling force, which can easily cope with the leveling needs of various high-quality metal materials;
Energy saving and environmental protection	Compared with traditional hydraulics, it saves 70% energy consumption, is green and environmentally friendly, reduces material loss, improves production efficiency, and has lower maintenance costs;
Strong compatibility	It can adapt to various scenarios in the manufacturing industry and can handle various materials from thin to thick, from soft to hard, with ultra-high applicability;
Anti-sag function	Dynamic servo hydraulic compensation technology is used to prevent angle collapse and improve leveling accuracy and material surface quality.

御Royal 尊贵型 伺服液压高精密矫平系列

ROYAL (Honorable style): Servo hydraulic high precision leveling machine series



■ 整平前后对比图

Comparison chart before and after leveling

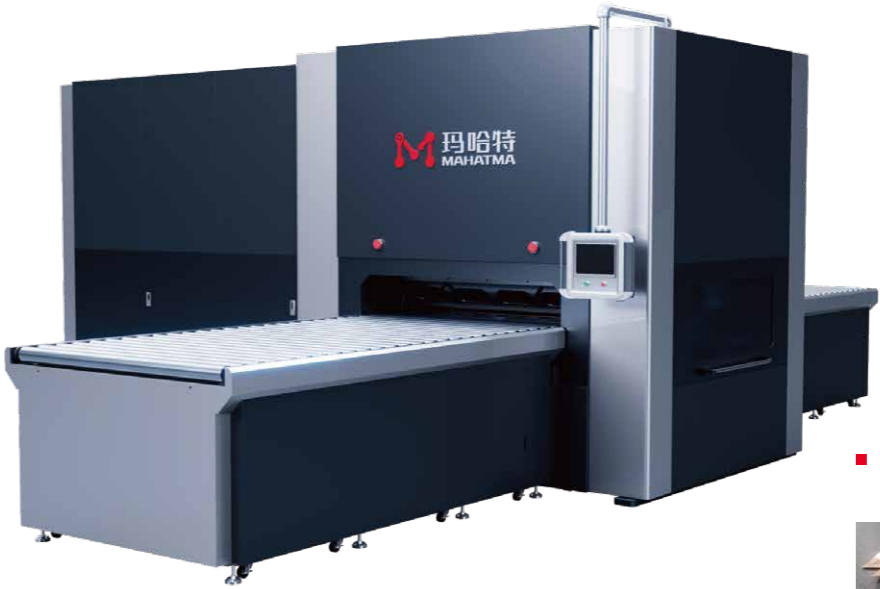


■ MHTY30系列(Series)

厚度(Thickness): 0.5-3.0mm

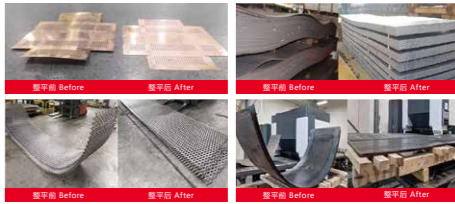
机 型 Model	MHTY30-600-23	MHTY30-1000-23	MHTY30-1300-23	MHTY30-1600-23	MHTY30-2100-23
宽 度 Width	0-600mm	0-1000mm	0-1300mm	0-1600mm	0-2100mm
辊 径 Roll diameter	30	30	30	30	30
额定厚度 Rated thickness	0.5-3.0mm	0.5-3.0mm	0.5-3.0mm	0.5-3.0mm	0.5-3.0mm
最大厚度 Maximum thickness	5.0mm	5.0mm	5.0mm	5.0mm	5.0mm
辊 数 Number of rolls	23	23	23	23	23
最短工件 Shortest part	60	60	60	60	60
矫平速度 Leveling speed	0-10m/min	0-10m/min	0-10m/min	0-10m/min	0-10m/min
电 压 Voltage	AC三相380VAC 3-phase 380V	AC三相380VAC 3-phase 380V	AC三相380VAC 3-phase 380V	AC三相380VAC 3-phase 380V	AC三相380VAC 3-phase 380V
选 配 Optional	<div><div><div>●四/六重式辊以及辊数数量 Four and six-fold rollers and number of rollers</div><div>●进出口流水线 Inlet and outflow assembly line</div></div><div><div>●上下料取料机械手 Loading and unloading manipulator</div><div>●支撑轮独立调节 The support roller is adjusted by motor independently</div></div><div><div>●上下料取料机器人 Loading and unloading robot</div><div>●自动检测平台 Automatic detection platform</div></div></div>				
更大、特殊尺寸、更快速度可按需求订制 Larger, special size, faster speed can be customized according to demand					

*设备参数根据材质(Material)Q235/屈服强度(Yield strength)235MPa计算。



■ 整平前后对比图

Comparison chart before and after leveling



■ MHTY40系列(Series)

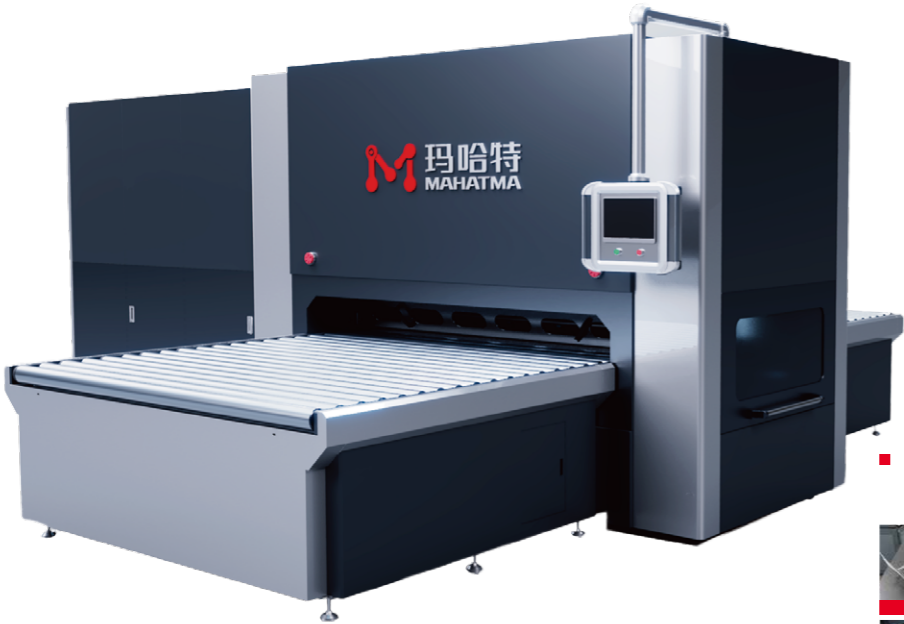
厚度(Thickness): 0.6-4.0mm

机 型 Model	MHTY40-600-23	MHTY40-1000-23	MHTY40-1300-23	MHTY40-1600-23	MHTY40-2100-23	MHTY40-2600-23
宽 度 Width	0-600mm	0-1000mm	0-1300mm	0-1600mm	0-2100mm	0-2600mm
辊 径 Roll diameter	40	40	40	40	40	40
额定厚度 Rated thickness	0.6-4.0mm	0.6-4.0mm	0.6-4.0mm	0.6-4.0mm	0.6-4.0mm	0.6-4.0mm
最大厚度 Maximum thickness	8.0mm	8.0mm	8.0mm	8.0mm	8.0mm	8.0mm
辊 数 Number of rolls	23	23	23	23	23	23
最短工件 Shortest part	80	80	80	80	80	80
矫平速度 Leveling speed	0-10m/min	0-10m/min	0-10m/min	0-10m/min	0-10m/min	0-10m/min
电 压 Voltage	AC三相380VAC 3-phase 380V	AC三相380VAC 3-phase 380V	AC三相380VAC 3-phase 380V	AC三相380VAC 3-phase 380V	AC三相380VAC 3-phase 380V	AC三相380VAC 3-phase 380V
选 配 Optional	<div><div><div>●四/六重式辊以及辊数数量 Four and six-fold rollers and number of rollers</div><div>●进出口流水线 Inlet and outflow assembly line</div></div><div><div>●上下料取料机机械手 Loading and unloading manipulator</div><div>●支撑轮独立调节 The support roller is adjusted by motor independently</div></div><div><div>●上下料取料机器人 Loading and unloading robot</div><div>●自动检测平台 Automatic detection platform</div></div></div>					
更大、特殊尺寸、更快速度可按需求订制 Larger, special size, faster speed can be customized according to demand						

*设备参数根据材质(Material)Q235/屈服强度(Yield strength)235MPa计算。

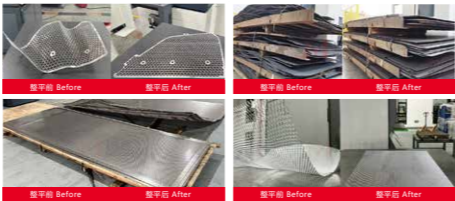
御Royal 尊贵型 伺服液压高精密矫平系列

ROYAL (Honorable style): Servo hydraulic high precision leveling machine series



■ 整平前后对比图

Comparison chart before and after leveling



■ MHTY50系列(Series)

厚度(Thickness): 0.8-5.0mm

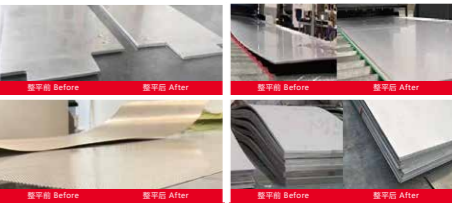
机 型 Model	MHTY50-600	MHTY50-1000	MHTY50-1300	MHTY50-1700	MHTY50-2100	MHTY50-2600
宽 度 Width	0-600mm	0-1000mm	0-1300mm	0-1700mm	0-2100mm	0-2600mm
辊 径 Roll diameter	50	50	50	50	50	50
额定厚度 Rated thickness	0.8-5.0mm	0.8-5.0mm	0.8-5.0mm	0.8-5.0mm	0.8-5.0mm	0.8-5.0mm
最大厚度 Maximum thickness	10.0mm	10.0mm	10.0mm	10.0mm	10.0mm	10.0mm
辊 数 Number of rolls	23	23	23	23	23	23
最短工件 Shortest part	100	100	100	100	100	100
矫平速度 Leveling speed	0-10m/min	0-10m/min	0-10m/min	0-10m/min	0-10m/min	0-10m/min
电 压 Voltage	AC三相380VAC 3-phase 380V	AC三相380VAC 3-phase 380V	AC三相380VAC 3-phase 380V	AC三相380VAC 3-phase 380V	AC三相380VAC 3-phase 380V	AC三相380VAC 3-phase 380V
选 配 Optional	<div><div>●四/六重式辊以及辊数数量 Four and six-fold rollers and number of rollers</div><div>●进/出料流水线 Inlet and outflow assembly line</div><div>●上下料取料机机械手 Loading and unloading manipulator</div><div>●支撑轮独立调节 The support roller is adjusted by motor independently</div><div>●上下料取料机器人 Loading and unloading robot</div><div>●自动检测平台 Automatic detection platform</div></div>					
<div>更大、特殊尺寸、更快速度可按需求订制</div> <div>Larger, special size, faster speed can be customized according to demand</div>						

*设备参数根据材质(Material)Q235/屈服强度(Yield strength)235MPa计算。



■ 整平前后对比图

Comparison chart before and after leveling



■ MHTY60系列(Series)

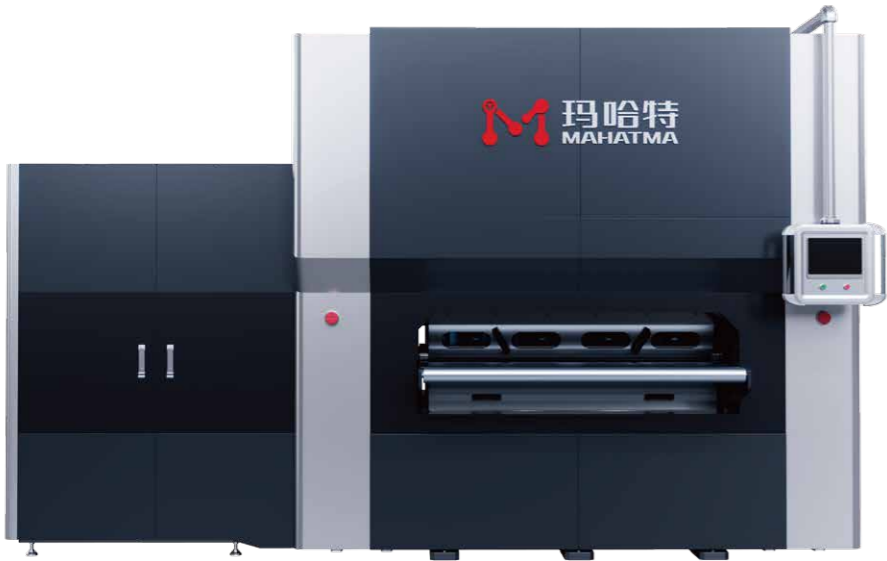
厚度(Thickness): 1.0-8.0mm

机 型 Model	MHTY60-600	MHTY60-1000	MHTY60-1400	MHTY60-1650	MHTY60-2100	MHTY60-2600	MHTY60-3200
宽 度 Width	0-600mm	0-1000mm	0-1400mm	0-1650mm	0-2100mm	0-2600mm	0-3200mm
辊 径 Roll diameter	60	60	60	60	60	60	60
额定厚度 Rated thickness	1.0-8.0mm	1.0-8.0mm	1.0-8.0mm	1.0-8.0mm	1.0-8.0mm	1.0-8.0mm	1.0-8.0mm
最大厚度 Maximum thickness	15mm	15mm	15mm	15mm	15mm	15mm	15mm
辊 数 Number of rolls	21	21	21	21	21	21	21
最短工件 Shortest part	130	130	130	130	130	130	130
矫平速度 Leveling speed	0-10m/min	0-10m/min	0-10m/min	0-10m/min	0-10m/min	0-10m/min	0-10m/min
电 压 Voltage	AC三相380VAC 3-phase 380V	AC三相380VAC 3-phase 380V	AC三相380VAC 3-phase 380V	AC三相380VAC 3-phase 380V	AC三相380VAC 3-phase 380V	AC三相380VAC 3-phase 380V	AC三相380VAC 3-phase 380V
选 配 Optional	<div>●四/六重式辊以及辊数数量 Four and six-fold rollers and number of rollers</div> <div>●进/出料流水线 Inlet and outflow assembly line</div> <div>●上下料取料机械手 Loading and unloading manipulator</div> <div>●支撑轮独立调节 The support roller is adjusted by motor independently</div> <div>●上下料取料机器人 Loading and unloading robot</div> <div>●自动检测平台 Automatic detection platform</div>						
更大、特殊尺寸、更快速度可按需求订制 Larger, special size, faster speed can be customized according to demand							

*设备参数根据材质(Material)Q235/屈服强度(Yield strength)235MPa计算。

御Royal 尊贵型 伺服液压高精密矫平系列

ROYAL (Honorable style): Servo hydraulic high precision leveling machine series



■ 整平前后对比图

Comparison chart before and after leveling



■ MHTY80系列(Series)

厚度(Thickness): 2.0-10.0mm

机 型 Model	MHTY80-400	MHTY80-800	MHTY80-1000	MHTY80-1300	MHTY80-1650	MHTY80-2100	MHTY80-2600	MHTY80-3200
宽 度 Width	0-400mm	0-800mm	0-1000mm	0-1300mm	0-1650mm	0-2100mm	0-2600mm	0-3200mm
辊 径 Roll diameter	80	80	80	80	80	80	80	80
额定厚度 Rated thickness	2.0-10.0mm	2.0-10.0mm	2.0-10.0mm	2.0-10.0mm	2.0-10.0mm	2.0-10.0mm	2.0-10.0mm	2.0-10.0mm
最大厚度 Maximum thickness	25.0mm	25.0mm	25.0mm	25.0mm	25.0mm	25.0mm	25.0mm	25.0mm
辊 数 Number of rolls	15/19	15/19	15/19	15/19	15/19	15/19	15/19	15/19
最短工件 Shortest part	150	150	150	150	150	150	150	150
矫平速度 Leveling speed	0-10m/min	0-10m/min	0-10m/min	0-10m/min	0-10m/min	0-10m/min	0-10m/min	0-10m/min
电 压 Voltage	AC三相380VAC 3-phase 380V	AC三相380VAC 3-phase 380V	AC三相380VAC 3-phase 380V	AC三相380VAC 3-phase 380V	AC三相380VAC 3-phase 380V	AC三相380VAC 3-phase 380V	AC三相380VAC 3-phase 380V	AC三相380VAC 3-phase 380V
选 配 Optional	<div><div><div>●四/六重式辊以及辊数数量 Four and six-fold rollers and number of rollers</div><div>● 进出料流水线 Inlet and outflow assembly line</div></div><div><div>● 上下料取料机械手 Loading and unloading manipulator</div><div>● 支撑轮独立调节 The support roller is adjusted by motor independently</div></div><div><div>● 上下料取料机器人 Loading and unloading robot</div><div>● 自动检测平台 Automatic detection platform</div></div></div>							
更大、特殊尺寸、更快速度可按需求订制 Larger, special size, faster speed can be customized according to demand								

* 设备参数根据材质(Material)Q235/屈服强度(Yield strength)235MPa计算。



■ 整平前后对比图

Comparison chart before and after leveling



■ MHTY100系列(Series)

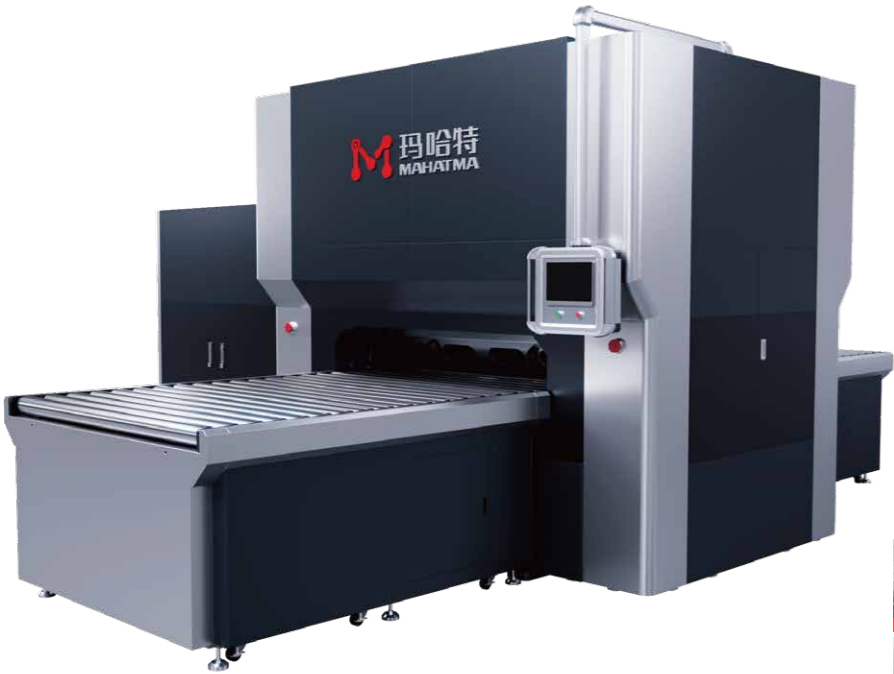
厚度(Thickness): 3.0-12.0mm

机 型 Model	MHTY100-600	MHTY100-1000	MHTY100-1300	MHTY100-1600	MHTY100-2100	MHTY100-2600	MHTY100-3200
宽 度 Width	0-600mm	0-1000mm	0-1300mm	0-1600mm	0-2100mm	0-2600mm	0-3200mm
辊 径 Roll diameter	100	100	100	100	100	100	100
额定厚度 Rated thickness	3.0-12.0mm	3.0-12.0mm	3.0-12.0mm	3.0-12.0mm	3.0-12.0mm	3.0-12.0mm	3.0-12.0mm
最大厚度 Maximum thickness	30.0mm	30.0mm	30.0mm	30.0mm	30.0mm	30.0mm	30.0mm
辊 数 Number of rolls	15/19	15/19	15/19	15/19	15/19	15/19	15/19
最短工件 Shortest part	160	160	160	160	160	160	160
矫平速度 Leveling speed	0-10m/min	0-10m/min	0-10m/min	0-10m/min	0-10m/min	0-10m/min	0-10m/min
电 压 Voltage	AC三相380VAC 3-phase 380V	AC三相380VAC 3-phase 380V	AC三相380VAC 3-phase 380V	AC三相380VAC 3-phase 380V	AC三相380VAC 3-phase 380V	AC三相380VAC 3-phase 380V	AC三相380VAC 3-phase 380V
选 配 Optional	<div><div><div>●四/六重式辊以及辊数数量 Four and six-fold rollers and number of rollers</div><div>●进出料流水线 Inlet and outflow assembly line</div></div><div><div>●上下料取料机械手 Loading and unloading manipulator</div><div>●支撑轮独立调节 The support roller is adjusted by motor independently</div></div><div><div>●上下料取料机器人 Loading and unloading robot</div><div>●自动检测平台 Automatic detection platform</div></div></div>						
<div>更大、特殊尺寸、更快速度可按需求订制</div> <div>Larger, special size, faster speed can be customized according to demand</div>							

* 设备参数根据材质(Material)Q235/屈服强度(Yield strength)235MPa计算。

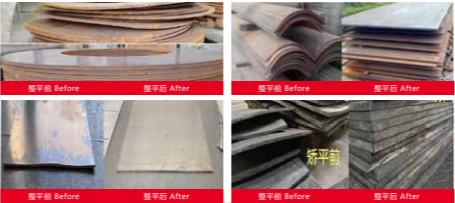
御Royal 尊贵型 伺服液压高精密矫平系列

ROYAL (Honorable style): Servo hydraulic high precision leveling machine series



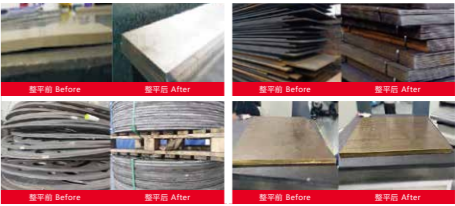
■ 整平前后对比图

Comparison chart before and after leveling



■ 整平前后对比图

Comparison chart before and after leveling



■ MHTY120系列(Series)

厚度(Thickness): 4.0-20.0mm

机 型 Model	MHTY120-600	MHTY120-1000	MHTY120-1300	MHTY120-1600	MHTY120-2100	MHTY120-2600	MHTY120-3200
宽 度 Width	0-600mm	0-1000mm	0-1300mm	0-1600mm	0-2100mm	0-2600mm	0-3200mm
辊 径 Roll diameter	120	120	120	120	120	120	120
额定厚度 Rated thickness	4.0-20.0mm	4.0-20.0mm	4.0-20.0mm	4.0-20.0mm	4.0-20.0mm	4.0-20.0mm	4.0-20.0mm
最大厚度 Maximum thickness	40.0mm	40.0mm	40.0mm	40.0mm	40.0mm	40.0mm	40.0mm
辊 数 Number of rolls	15/19	15/19	15/19	15/19	15/19	15/19	15/19
最短工件 Shortest part	190	190	190	190	190	190	190
矫平速度 Leveling speed	0-10m/min	0-10m/min	0-10m/min	0-10m/min	0-10m/min	0-10m/min	0-10m/min
电 压 Voltage	AC三相380VAC 3-phase 380V	AC三相380VAC 3-phase 380V	AC三相380VAC 3-phase 380V	AC三相380VAC 3-phase 380V	AC三相380VAC 3-phase 380V	AC三相380VAC 3-phase 380V	AC三相380VAC 3-phase 380V
选 配 Optional	●四/六重式辊以及辊数数量 Four and six-fold rollers and number of rollers		●上下料取料机机械手 Loading and unloading manipulator		●上下料取料机器人 Loading and unloading robot		
	●进出料流水线 Inlet and outflow assembly line		●支撑轮独立调节 The support roller is adjusted by motor independently		●自动检测平台 Automatic detection platform		
更大、特殊尺寸、更快速度可按需求订制 Larger, special size, faster speed can be customized according to demand							

*设备参数根据材质(Material)Q235/屈服强度(Yield strength)235MPa计算。

■ MHTY150系列(Series)

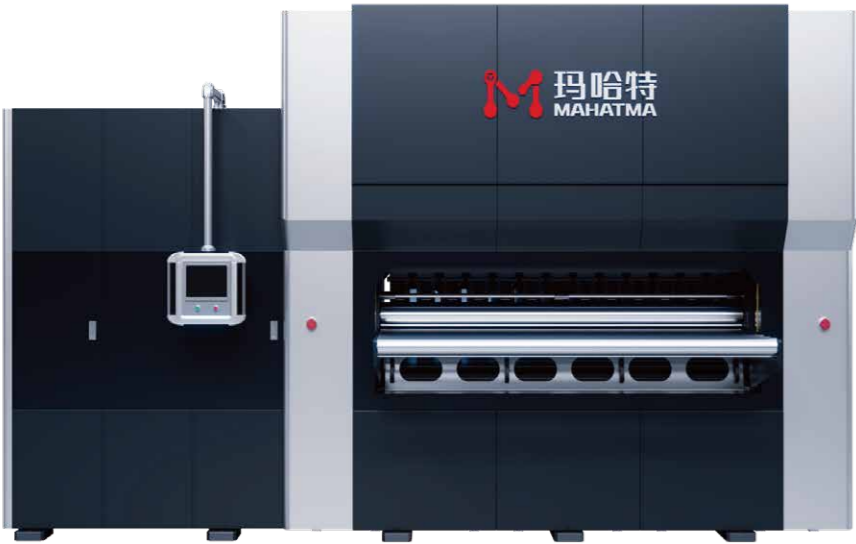
厚度(Thickness): 6.0-30.0mm

机 型 Model	MHTY150-800	MHTY150-1000	MHTY150-1300	MHTY150-1700	MHTY150-2100	MHTY150-2600	MHTY150-3200
宽 度 Width	0-800mm	0-1000mm	0-1300mm	0-1700mm	0-2100mm	0-2600mm	0-3200mm
辊 径 Roll diameter	150	150	150	150	150	150	150
额定厚度 Rated thickness	6.0-30.0mm	6.0-30.0mm	6.0-30.0mm	6.0-30.0mm	6.0-30.0mm	6.0-30.0mm	6.0-30.0mm
最大厚度 Maximum thickness	50.0mm	50.0mm	50.0mm	50.0mm	50.0mm	50.0mm	50.0mm
辊 数 Number of rolls	15/19	15/19	15/19	15/19	15/19	15/19	15/19
最短工件 Shortest part	250	250	250	250	250	250	250
矫平速度 Leveling speed	0-10m/min	0-10m/min	0-10m/min	0-10m/min	0-10m/min	0-10m/min	0-10m/min
电 压 Voltage	AC三相380VAC 3-phase 380V	AC三相380VAC 3-phase 380V	AC三相380VAC 3-phase 380V	AC三相380VAC 3-phase 380V	AC三相380VAC 3-phase 380V	AC三相380VAC 3-phase 380V	AC三相380VAC 3-phase 380V
选 配 Optional	<div><div><div>●四/六重式辊以及辊数数量 Four and six-fold rollers and number of rollers</div><div>●进出料流水线 Inlet and outflow assembly line</div></div><div><div>●上下料取料机机械手 Loading and unloading manipulator</div><div>●支撑轮独立调节 The support roller is adjusted by motor independently</div></div><div><div>●上下料取料机器人 Loading and unloading robot</div><div>●自动检测平台 Automatic detection platform</div></div></div>						
更大、特殊尺寸、更快速度可按需求订制 Larger, special size, faster speed can be customized according to demand							

*设备参数根据材质(Material)Q235/屈服强度(Yield strength)235MPa计算。

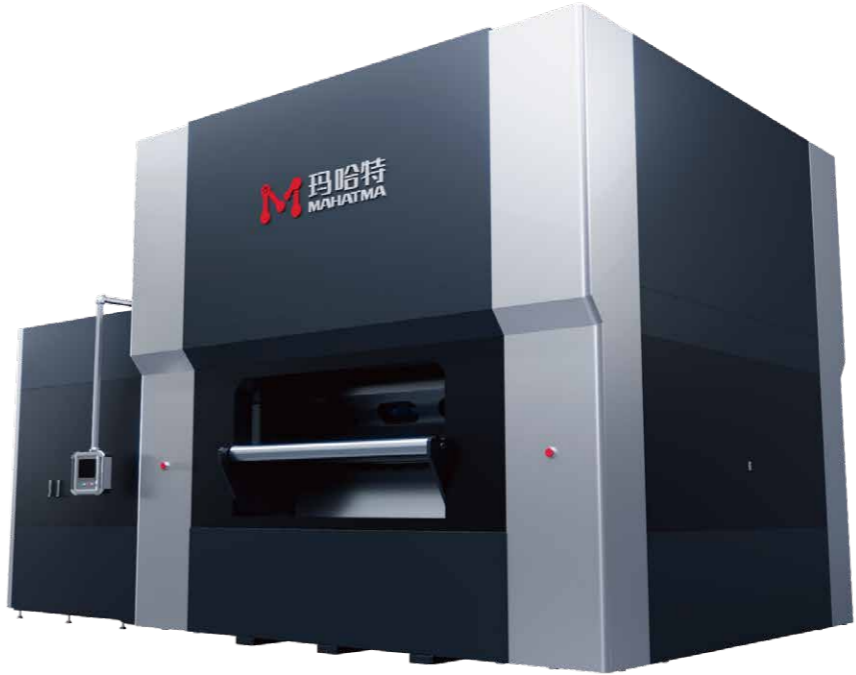
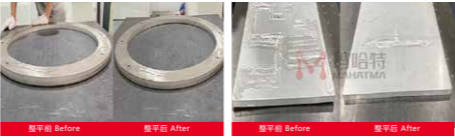
御Royal 尊贵型 伺服液压高精密矫平系列

ROYAL (Honorable style): Servo hydraulic high precision leveling machine series



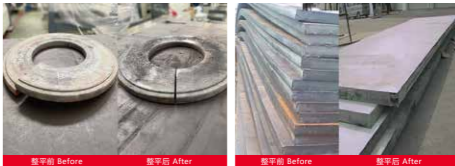
■ 整平前后对比图

Comparison chart before and after leveling



■ 整平前后对比图

Comparison chart before and after leveling



■ MHTY200系列(Series)

厚度(Thickness): 8.0-40.0mm

机 型 Model	MHTY200-1000	MHTY200-1300	MHTY200-1600	MHTY200-2100	MHTY200-2600	MHTY200-3200
宽 度 Width	0-1000mm	0-1300mm	0-1600mm	0-2100mm	0-2600mm	0-3200mm
辊 径 Roll diameter	200	200	200	200	200	200
额定厚度 Rated thickness	8.0-40.0mm	8.0-40.0mm	8.0-40.0mm	8.0-40.0mm	8.0-40.0mm	8.0-40.0mm
最大厚度 Maximum thickness	60.0mm	60.0mm	60.0mm	60.0mm	60.0mm	60.0mm
辊 数 Number of rolls	11/15	11/15	11/15	11/15	11/15	11/15
最短工件 Shortest part	310	310	310	310	310	310
矫平速度 Leveling speed	0-10m/min	0-10m/min	0-10m/min	0-10m/min	0-10m/min	0-10m/min
电 压 Voltage	AC三相380VAC 3-phase 380V	AC三相380VAC 3-phase 380V	AC三相380VAC 3-phase 380V	AC三相380VAC 3-phase 380V	AC三相380VAC 3-phase 380V	AC三相380VAC 3-phase 380V
选 配 Optional	<div><div><div>●四/六重式辊以及辊数数量 Four and six-fold rollers and number of rollers</div><div>●进出料流水线 Inlet and outflow assembly line</div></div><div><div>●上下料取料机械手 Loading and unloading manipulator</div><div>●支撑轮独立调节 The support roller is adjusted by motor independently</div></div><div><div>●上下料取料机器人 Loading and unloading robot</div><div>●自动检测平台 Automatic detection platform</div></div></div>					
更大、特殊尺寸、更快速度可按需求订制 Larger, special size, faster speed can be customized according to demand						

*设备参数根据材质(Material)Q235/屈服强度(Yield strength)235MPa计算。

■ MHTY260系列(Series)

厚度(Thickness): 10.0-60.0mm

机 型 Model	MHTY260-1300	MHTY260-1600	MHTY260-2100	MHTY260-2600	MHTY260-3200	MHTY260-4000
宽 度 Width	0-1300mm	0-1600mm	0-2100mm	0-2600mm	0-3200mm	0-4000mm
辊 径 Roll diameter	260	260	260	260	260	260
额定厚度 Rated thickness	10.0-60.0mm	10.0-60.0mm	10.0-60.0mm	10.0-60.0mm	10.0-60.0mm	10.0-60.0mm
最大厚度 Maximum thickness	80.0mm	80.0mm	80.0mm	80.0mm	80.0mm	80.0mm
辊 数 Number of rolls	9/11	9/11	9/11	9/11	9/11	9/11
最短工件 Shortest part	400	400	400	400	400	400
矫平速度 Leveling speed	0-10m/min	0-10m/min	0-10m/min	0-10m/min	0-10m/min	0-10m/min
电 压 Voltage	AC三相380VAC 3-phase 380V	AC三相380VAC 3-phase 380V	AC三相380VAC 3-phase 380V	AC三相380VAC 3-phase 380V	AC三相380VAC 3-phase 380V	AC三相380VAC 3-phase 380V
选 配 Optional	●四/六重式辊以及辊数数量 Four and six-fold rollers and number of rollers		●上下料取料机械手 Loading and unloading manipulator		●上下料取料机器人 Loading and unloading robot	
	●进出料流水线 Inlet and outflow assembly line		●支撑轮独立调节 The support roller is adjusted by motor independently		●自动检测平台 Automatic detection platform	
更大、特殊尺寸、更快速度可按需求订制 Larger, special size, faster speed can be customized according to demand						

*设备参数根据材质(Material)Q235/屈服强度(Yield strength)235MPa计算。

御Royal 尊贵型 伺服液压高精密矫平系列

ROYAL (Honorable style): Servo hydraulic high precision leveling machine series



■ 整平前后对比图

Comparison chart before and after leveling



■ MHTY300系列(Series)

厚度(Thickness): 15.0-80.0mm

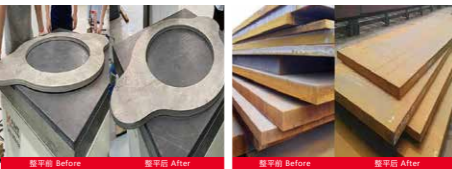
机 型 Model	MHTY300-1300	MHTY300-1600	MHTY300-2100	MHTY300-2600	MHTY300-3200	MHTY300-4000
宽 度 Width	0-1300mm	0-1600mm	0-2100mm	0-2600mm	0-3200mm	0-4000mm
辊 径 Roll diameter	300	300	300	300	300	300
额定厚度 Rated thickness	15.0-80.0mm	15.0-80.0mm	15.0-80.0mm	15.0-80.0mm	15.0-80.0mm	15.0-80.0mm
最大厚度 Maximum thickness	100.0mm	100.0mm	100.0mm	100.0mm	100.0mm	100.0mm
辊 数 Number of rolls	9	9	9	9	9	9
最短工件 Shortest part	480	480	480	480	480	480
矫平速度 Leveling speed	0-10m/min	0-10m/min	0-10m/min	0-10m/min	0-10m/min	0-10m/min
电 压 Voltage	AC三相380VAC 3-phase 380V	AC三相380VAC 3-phase 380V	AC三相380VAC 3-phase 380V	AC三相380VAC 3-phase 380V	AC三相380VAC 3-phase 380V	AC三相380VAC 3-phase 380V
选 配 Optional	<div><div><div>●四/六重式辊以及辊数数量 Four and six-fold rollers and number of rollers</div><div>●进出料流水线 Inlet and outflow assembly line</div></div><div><div>●上下料取料机械手 Loading and unloading manipulator</div><div>●支撑轮独立调节 The support roller is adjusted by motor independently</div></div><div><div>●上下料取料机器人 Loading and unloading robot</div><div>●自动检测平台 Automatic detection platform</div></div></div>					
更大、特殊尺寸、更快速度可按需求订制 Larger, special size, faster speed can be customized according to demand						

*设备参数根据材质(Material)Q235/屈服强度(Yield strength)235MPa计算。



■ 整平前后对比图

Comparison chart before and after leveling



■ MHTY400系列(Series)

厚度(Thickness): 20.0-100.0mm

机 型 Model	MHTY400-1300	MHTY400-1600	MHTY400-2100	MHTY400-2600	MHTY400-3200	MHTY400-4000
宽 度 Width	0-1300mm	0-1600mm	0-2100mm	0-2600mm	0-3200mm	0-4000mm
辊 径 Roll diameter	400	400	400	400	400	400
额定厚度 Rated thickness	20.0-100.0mm	20.0-100.0mm	20.0-100.0mm	20.0-100.0mm	20.0-100.0mm	20.0-100.0mm
最大厚度 Maximum thickness	120.0mm	120.0mm	120.0mm	120.0mm	120.0mm	120.0mm
辊 数 Number of rolls	9	9	9	9	9	9
最短工件 Shortest part	610	610	610	610	610	610
矫平速度 Leveling speed	0-10m/min	0-10m/min	0-10m/min	0-10m/min	0-10m/min	0-10m/min
电 压 Voltage	AC三相380VAC 3-phase 380V	AC三相380VAC 3-phase 380V	AC三相380VAC 3-phase 380V	AC三相380VAC 3-phase 380V	AC三相380VAC 3-phase 380V	AC三相380VAC 3-phase 380V
选 配 Optional	<div><div><div>●四/六重式辊以及辊数数量 Four and six-fold rollers and number of rollers</div><div>●进出料流水线 Inlet and outflow assembly line</div></div><div><div>●上下料取料机机械手 Loading and unloading manipulator</div><div>●支撑轮独立调节 The support roller is adjusted by motor independently</div></div><div><div>●上下料取料机器人 Loading and unloading robot</div><div>●自动检测平台 Automatic detection platform</div></div></div>					
更大、特殊尺寸、更快速度可按需求订制 Larger, special size, faster speed can be customized according to demand						

*设备参数根据材质(Material)Q235/屈服强度(Yield strength)235MPa计算。



■ 设备功能

Device function

该系列机型采用了伺服电机、数控技术及自主研发的智慧超矫数控系统，系统中存有大量的矫平工艺参数，可以根据不同的卷料和板料自动设定矫平压力和初始工作参数，并可以随时修改、储存、调用工艺和编辑设备参数的功能。

配备自动激光三维检测、误操作识别预警等智能化功能，是集尖端技术于一身的高端矫平设备。伺服电机提供了高速度、高扭矩和精确位置控制的能力，有助于实现快速、平稳的矫平操作。减少液压油的使用和能源消耗使得伺服液压矫平机更加环保。

This series of machines adopts servo motors, CNC technology and a self-developed intelligent super-leveling CNC system. There are a large number of leveling process parameters in the system, which can automatically set the leveling pressure and initial work according to different coils and sheets. Parameters, and can modify, store, call process and edit equipment parameters at any time.

Equipped with intelligent functions such as automatic laser three-dimensional detection, misoperation identification and early warning, it is a high-end leveling equipment integrating cutting-edge technology. Servo motors provide the capability for high speed, high torque and precise position control, helping to achieve fast, smooth leveling operations. Reducing hydraulic oil usage and energy consumption makes servo-hydraulic levelers more environmentally friendly.

■ 标准配置：Micro Innovation公司的触摸式屏幕	■ standard configuration: Micro Innovation company's touch screen
■ 可以存储200个零件材料信息（根据客户要求，存储容量还可以扩大）	■ Can store 200 records (according to customer requirements, Storage capacity can also be expanded)
■ 简洁的、一目了然的操作界面	■ concise, clear user interface
■ 专业的计算程序，快速的矫平间隙设置	■ professional application, fast levelling gap setting
■ 数据显示至0.01mm范围	■ according to 0.01 mm
■ 可选配置：远程服务	■ optional configuration: remote service

悟 Wits 旗舰型 智慧数控超矫系列

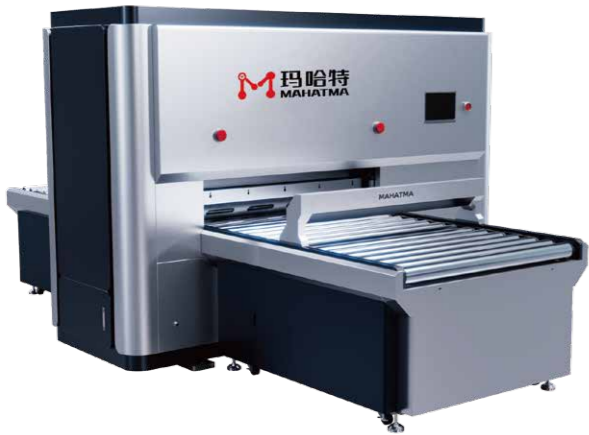
Wits (Flagship style): Intelligent Servo-CNC Leveling machine series

尊贵奢华	工业美学设计，非凡大师宝马漆，多层精工涂装工艺，实力象征，彰显尊贵气质与品质
鲲鹏结构	专利结构工艺，高强度构造，防震抗压，稳如磐石，全开放式设计，一键展翅
节能先锋	伺服机电矫平间隙控制，精密高效，采用最新的节能技术，节能环保，动力强悍
格律辊组	密布式全支撑结构结合宽支撑轴，高强度少压痕，增强承载能力，持久稳定，杜绝变形
标杆性能	智能辊盒抽出清洁系统、快速轻松地清洁矫平辊和支撑辊！国内第一
智慧科技	智能化人机界面，实时监控和调整，远程控制、自动计数等前沿功能
安全守护	过载保护、光电保护、误操作智能预警等
全场景化	可与各类生产线无缝对接，提高生产线的自动化程度
防塌角功能	采用动态伺服补偿技术，预防塌角，提高矫平精度和材料的表面质量

Noble and luxurious	Industrial aesthetic design, Extraordinary Master BMW paint, multi-layer precision painting process, symbol of strength, highlighting noble temperament and quality;
Kunpeng structure	Patented structural technology, high-strength structure, shock-proof and pressure-resistant, rock-solid, fully open design, one-click spread;
Metrical roller set	Servo electromechanical leveling gap control, precise and efficient, using the latest energy-saving technology, energy-saving and environmentally friendly, powerful power;
Energy Saving Pioneer	Dense full support structure combined with wide support shaft, high strength and less indentation, enhanced load-bearing capacity, long-lasting stability, and elimination of deformation;
Benchmark performance	Smart roller box pull-out cleaning system for quick and easy cleaning of leveling and support rollers! No. 1 in China;
Smart technology	Intelligent human-machine interface, real-time monitoring and adjustment, remote control, automatic counting and other cutting-edge functions;
Security guard	Overload protection, photoelectric protection, intelligent early warning of misoperation, etc;
Full scene	Can be seamlessly connected with various production lines to improve the automation of the production line;
Anti-sag function	Dynamic servo compensation technology is used to prevent angle collapse and improve leveling accuracy and material surface quality.

智能操作系统	全新风格，强大的动态性能和稳定性，提升软件操作流畅度；集成快速智能矫平模式
MHTP系列高精密矫平机	自主知识产权，多项专利技术，超高效率矫平，智能控制
全机床自润滑系统	高智能、高集成、免维护，一键设置油压低报警，无油停机，避免润滑不及时造成机床磨损
远程云控制系统	可实现远程监控设备运行状态，故障查询、故障判断等，实时对设备进行云监控
自主研制齿轮箱	齿轮万向节传动，加速度和速度更快，具有较好的刚性和耐冲击力
中空结构机床	机床主体无受热区域，永久使用无热变形，机床主体稳定可靠，使矫平精度长期稳定

Intelligent operating system	New style of intelligent operating system, powerful dynamic performance and stability, improve software operation fluency; integrated fast intelligent leveling mode;
MHTP series high-precision leveling machine	Independent intellectual property rights, a number of patented technologies, ultra-high-efficiency leveling,intelligent control;
Self-lubricating system for all machine tools	High intelligence, high integration, maintenance-free, one-button setting for low oil pressure alarm, no oil shutdown, avoiding machine wear caused by untimely lubrication;
Remote cloud control system	It can realize remote monitoring of equipment operating status, fault query, fault judgment, etc., and real-time cloud monitoring of equipment; self-developed gearbox gear universal joint transmission, faster acceleration and speed, and better rigidity and impact resistance;
Independently developed gearbox	Gear universal joint transmission, faster acceleration and speed, better rigidity and impact resistance;
Hollow structure machine tool	The main body of the machine tool has no heating area, and there is no thermal deformation in permanent use. The main body of the machine tool is stable and reliable, so that the leveling accuracy is stable for a long time.



带自动检测示意图

Schematic diagram with automatic detection

- 可以用于检测金属产品平面度，测量过程不需要停顿，测量速度快；
- 自动检测,大大提高测量效率，实现机械化快速测量平整度，操作简单便利、高度精确。
- 测量应用：快速检测金属板材的平面度。
- Can be used to detect the flatness of metal products, the measurement process does not need to stop, the measurement speed is fast;
- Automatic detection, greatly improve the efficiency of measurement, mechanization and rapid measurement of flatness, simple and convenient operation, highly accurate.
- Measurement application: rapid detection of the flatness of metal sheet.

■ 辊轮自动抽出清洁装置

Roller automatic extraction cleaning device



玛哈特专利技术，国内独一无二，整体式矫平辊盒打开保养

Mahatma patent technology, unique in China, the whole leveling roller box open maintenance

Clean Cs自动辊盒抽出清洁系统是国内唯一的矫平辊清洁专利技术，是专为矫平机设计的创新技术，旨在解决辊盒清洁的需求。相对于较粗较重的矫平辊，拆卸时使用吊车等辅助工具，该系统实现了自动化辊盒抽出清洁，只需一人操作即可，大幅度提高操作安全性与生产效率。还提升了清洁效率和便利性。通过全面覆盖辊盒，系统确保了彻底的清洁，避免残留物对生产线的不良影响，减少生产线停机时间和人工操作的工作量，确保产品表面质量的一致性。

在矫平过程中，由于常常会出现材料本身带有的毛刺、金属碎屑和氧化物等残留物滞留在矫平辊上的情况。如果不及时清洁，这些残留物可能会对后续产品的表面质量造成压痕、压伤和划伤等不良影响。该系统尤适用于铝合金等产品的矫平工艺。

Clean Cs automatic roller box extraction cleaning system is the only patented technology for leveling roller cleaning in China. It is an innovative technology specially designed for leveling machines and aims to solve the need for roller box cleaning. Compared with thicker and heavier leveling rollers, which require the use of cranes and other auxilliary tools when disassembling, this system realizes automated roll box extraction and cleaning, requiring only one person to operate, greatly improving operational safety and production efficiency. It also improves cleaning efficiency and convenience. By fully covering the roller box, the system ensures thorough cleaning, avoids the negative impact of residues on the production line, reduces production line downtime and manual operation workload, and ensures consistent product surface quality.

And during the leveling process, residues such as burrs, metal chips, and oxides contained in the material often remain on the leveling roller. If not cleaned in time, these residues may cause negative effects such as dents, bruises and scratches on the surface quality of subsequent products. This system is especially suitable for the leveling process of aluminum alloy and other products.

悟 Wits 旗舰型 智慧数控超矫系列

Wits (Flagship style): Intelligent Servo-CNC Leveling machine series



■ 整平前后对比图

Comparison chart before and after leveling



■ MHTP15系列(Series)

厚度(Thickness): 0.08-1.0mm

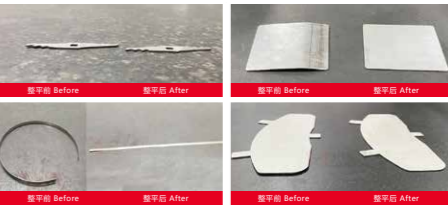
机 型 Model	MHTP15-300-33	MHTP15-400-33	MHTP15-600-33
宽 度 Width	0-300mm	0-400mm	0-600mm
辊 径 Roll diameter	15	15	15
额定厚度 Rated thickness	0.08-1.0mm	0.08-1.0mm	0.08-1.0mm
最大厚度 Maximum thickness	2.0mm	2.0mm	2.0mm
辊 数 Number of rolls	33	33	33
最短工件 Shortest part	30	30	30
矫平速度 Leveling speed	0-10m/min	0-10m/min	0-10m/min
电 压 Voltage	AC三相380VAC 3-phase 380V	AC三相380VAC 3-phase 380V	AC三相380VAC 3-phase 380V
选 配 Optional	●四/六重式辊以及辊数数量 Four and six-fold rollers and number of rollers ●进出料流水线 Inlet and outflow assembly line	●上下料取料机械手 Loading and unloading manipulator ●支撑轮独立调节 The support roller is adjusted by motor independently	●上下料取料机器人 Loading and unloading robot ●自动检测平台 Automatic detection platform
更大、特殊尺寸、更快速度可按需求订制 Larger, special size, faster speed can be customized according to demand			

*设备参数根据材质(Material)Q235/屈服强度(Yield strength)235MPa计算。



■ 整平前后对比图

Comparison chart before and after leveling



■ MHTP20系列(Series)

厚度(Thickness): 0.3-1.2mm

机 型 Model	MHTP20-400-23	MHTP20-800-23	MHTP20-1300-23
宽 度 Width	0-400mm	0-800mm	0-1300mm
辊 径 Roll diameter	20	20	20
额定厚度 Rated thickness	0.3-1.2mm	0.3-1.2mm	0.3-1.2mm
最大厚度 Maximum thickness	3.0mm	3.0mm	3.0mm
辊 数 Number of rolls	23	23	23
最短工件 Shortest part	40	40	40
矫平速度 Leveling speed	0-10m/min	0-10m/min	0-10m/min
电 压 Voltage	AC三相380VAC 3-phase 380V	AC三相380VAC 3-phase 380V	AC三相380VAC 3-phase 380V
选 配 Optional	●四/六重式辊以及辊数数量 Four and six-fold rollers and number of rollers ●进出料流水线 Inlet and outflow assembly line	●上下料取料机械手 Loading and unloading manipulator ●支撑轮独立调节 The support roller is adjusted by motor independently	●上下料取料机器人 Loading and unloading robot ●自动检测平台 Automatic detection platform
更大、特殊尺寸、更快速度可按需求订制 Larger, special size, faster speed can be customized according to demand			

*设备参数根据材质(Material)Q235/屈服强度(Yield strength)235MPa计算。

悟 Wits 旗舰型 智慧数控超矫系列

Wits (Flagship style): Intelligent Servo-CNC Leveling machine series



■ 整平前后对比图

Comparison chart before and after leveling



■ MHTP30系列(Series)

厚度(Thickness): 0.5-2.0mm

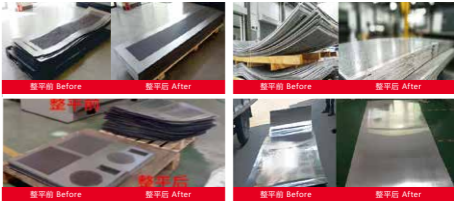
机 型 Model	MHTP30-400-23	MHTP30-800-23	MHTP30-1300-23	MHTP30-1600-23
宽 度 Width	0-400mm	0-800mm	0-1300mm	0-1600mm
辊 径 Roll diameter	30	30	30	30
额定厚度 Rated thickness	0.5-2.0mm	0.5-2.0mm	0.5-2.0mm	0.5-2.0mm
最大厚度 Maximum thickness	4.0mm	4.0mm	4.0mm	4.0mm
辊 数 Number of rolls	23	23	23	23
最短工件 Shortest part	60	60	60	60
矫平速度 Leveling speed	0-10m/min	0-10m/min	0-10m/min	0-10m/min
电 压 Voltage	AC三相380VAC 3-phase 380V	AC三相380VAC 3-phase 380V	AC三相380VAC 3-phase 380V	AC三相380VAC 3-phase 380V
选 配 Optional	<div>●四/六重式辊以及辊数数量 Four and six-fold rollers and number of rollers</div> <div>●进出料流水线 Inlet and outflow assembly line</div> <div>●上下料取料机机械手 Loading and unloading manipulator</div> <div>●支撑轮独立调节 The support roller is adjusted by motor independently</div> <div>●上下料取料机器人 Loading and unloading robot</div> <div>●自动检测平台 Automatic detection platform</div>			
<div>更大、特殊尺寸、更快速度可按需求订制</div> <div>Larger, special size, faster speed can be customized according to demand</div>				

*设备参数根据材质(Material)Q235/屈服强度(Yield strength)235MPa计算。



■ 整平前后对比图

Comparison chart before and after leveling



■ MHTP40系列(Series)

厚度(Thickness): 0.6-3.0mm

机 型 Model	MHTP40-400-23	MHTP40-800-23	MHTP40-1300-23	MHTP40-1600-23
宽 度 Width	0-400mm	0-800mm	0-1300mm	0-1600mm
辊 径 Roll diameter	40	40		40
额定厚度 Rated thickness	0.6-3.0mm	0.6-3.0mm		0.6-3.0mm
最大厚度 Maximum thickness	6.0mm	6.0mm		6.0mm
辊 数 Number of rolls	23	23		23
最短工件 Shortest part	70	70	70	70
矫平速度 Leveling speed	0-10m/min	0-10m/min	0-10m/min	0-10m/min
电 压 Voltage	AC三相380VAC 3-phase 380V	AC三相380VAC 3-phase 380V	AC三相380VAC 3-phase 380V	AC三相380VAC 3-phase 380V
选 配 Optional	<div><div><ul style="list-style-type: none">●四/六重式辊以及辊数数量 Four and six-fold rollers and number of rollers●进出料流水线 Inlet and outflow assembly line</div><div><ul style="list-style-type: none">●上下料取料机械手 Loading and unloading manipulator●支撑轮独立调节 The support roller is adjusted by motor independently</div><div><ul style="list-style-type: none">●上下料取料机器人 Loading and unloading robot●自动检测平台 Automatic detection platform</div></div>			
<div>更大、特殊尺寸、更快速度可按需求订制</div> <div>Larger, special size, faster speed can be customized according to demand</div>				

*设备参数根据材质(Material)Q235/屈服强度(Yield strength)235MPa计算。

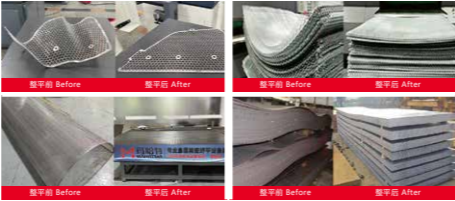
悟 Wits 旗舰型 智慧数控超矫系列

Wits (Flagship style): Intelligent Servo-CNC Leveling machine series



■ 整平前后对比图

Comparison chart before and after leveling



■ MHTP50系列(Series)

厚度(Thickness): 0.8-4.0mm

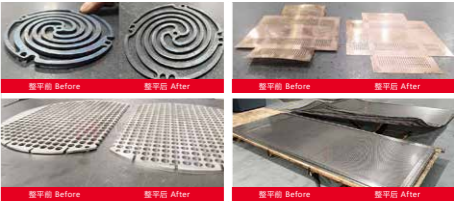
机 型 Model	MHTP50-400-23	MHTP50-800-23	MHTP50-1300-23	MHTP50-1600-23
宽 度 Width	0-400mm	0-800mm	0-1300mm	0-1600mm
辊 径 Roll diameter	50	50	50	50
额定厚度 Rated thickness	0.8-4.0mm	0.8-4.0mm	0.8-4.0mm	0.8-4.0mm
最大厚度 Maximum thickness	8.0mm	8.0mm	8.0mm	8.0mm
辊 数 Number of rolls	23	23	23	23
最短工件 Shortest part	90	90	90	90
矫平速度 Leveling speed	0-10m/min	0-10m/min	0-10m/min	0-10m/min
电 压 Voltage	AC三相380VAC 3-phase 380V	AC三相380VAC 3-phase 380V	AC三相380VAC 3-phase 380V	AC三相380VAC 3-phase 380V
选 配 Optional	<div><div><ul style="list-style-type: none">●四/六重式辊以及辊数数量 Four and six-fold rollers and number of rollers●进出料流水线 Inlet and outflow assembly line</div><div><ul style="list-style-type: none">●上下料取料机械手 Loading and unloading manipulator●支撑轮独立调节 The support roller is adjusted by motor independently</div><div><ul style="list-style-type: none">●上下料取料机器人 Loading and unloading robot●自动检测平台 Automatic detection platform</div></div>			
<div>更大、特殊尺寸、更快速度可按需求订制</div> <div>Larger, special size, faster speed can be customized according to demand</div>				

*设备参数根据材质(Material)Q235/屈服强度(Yield strength)235MPa计算。



■ 整平前后对比图

Comparison chart before and after leveling



■ MHTP60系列(Series)

厚度(Thickness): 1.0-6.0mm

机 型 Model	MHTP60-600-21	MHTP60-1000-21	MHTP60-1300-21	MHTP60-1600-21
宽 度 Width	0-600mm	0-1000mm	0-1300mm	0-1600mm
辊 径 Roll diameter	60	60	60	60
额定厚度 Rated thickness	1.0-6.0mm	1.0-6.0mm	1.0-6.0mm	1.0-6.0mm
最大厚度 Maximum thickness	12mm	12mm	12mm	12mm
辊 数 Number of rolls	21	21	21	21
最短工件 Shortest part	100	100	100	100
矫平速度 Leveling speed	0-10m/min	0-10m/min	0-10m/min	0-10m/min
电 压 Voltage	AC三相380VAC 3-phase 380V	AC三相380VAC 3-phase 380V	AC三相380VAC 3-phase 380V	AC三相380VAC 3-phase 380V
选 配 Optional	<div><div><ul style="list-style-type: none">●四/六重式辊以及辊数数量 Four and six-fold rollers and number of rollers●进出料流水线 Inlet and outflow assembly line</div><div><ul style="list-style-type: none">●上下料取料机械手 Loading and unloading manipulator●支撑轮独立调节 The support roller is adjusted by motor independently</div><div><ul style="list-style-type: none">●上下料取料机器人 Loading and unloading robot●自动检测平台 Automatic detection platform</div></div>			
<div>更大、特殊尺寸、更快速度可按需求订制</div> <div>Larger, special size, faster speed can be customized according to demand</div>				

*设备参数根据材质(Material)Q235/屈服强度(Yield strength)235MPa计算。

悟 Wits 旗舰型 智慧数控超矫系列

Wits (Flagship style): Intelligent Servo-CNC Leveling machine series



■ 整平前后对比图

Comparison chart before and after leveling



■ MHTP80系列(Series)

厚度(Thickness): 2.0-8.0mm

机 型 Model	MHTP80-400-19	MHTP80-800-19	MHTP80-1300-19	MHTP80-1600-19
宽 度 Width	0-400mm	0-800mm	0-1300mm	0-1600mm
辊 径 Roll diameter	80	80		80
额定厚度 Rated thickness	2.0-8.0mm	2.0-8.0mm		2.0-8.0mm
最大厚度 Maximum thickness	16.0mm	16.0mm		16.0mm
辊 数 Number of rolls	19	19		19
最短工件 Shortest part	130	130	130	130
矫平速度 Leveling speed	0-10m/min	0-10m/min	0-10m/min	0-10m/min
电 压 Voltage	AC三相380VAC 3-phase 380V	AC三相380VAC 3-phase 380V	AC三相380VAC 3-phase 380V	AC三相380VAC 3-phase 380V
选 配 Optional	<div><div><ul style="list-style-type: none">●四/六重式辊以及辊数数量 Four and six-fold rollers and number of rollers●进出料流水线 Inlet and outflow assembly line</div><div><ul style="list-style-type: none">●上下料取料机械手 Loading and unloading manipulator●支撑轮独立调节 The support roller is adjusted by motor independently</div><div><ul style="list-style-type: none">●上下料取料机器人 Loading and unloading robot●自动检测平台 Automatic detection platform</div></div>			
<div>更大、特殊尺寸、更快速度可按需求订制</div> <div>Larger, special size, faster speed can be customized according to demand</div>				

*设备参数根据材质(Material)Q235/屈服强度(Yield strength)235MPa计算。



■ 整平前后对比图

Comparison chart before and after leveling



■ MHTP100系列(Series)

厚度(Thickness): 3.0-12.0mm

机 型 Model	MHTP100-600-19	MHTP100-1000-19	MHTP100-1300-19	MHTP100-1600-19	MHTP100-2100-19
宽 度 Width	0-600mm	0-1000mm	0-1300mm	0-1600mm	0-2100mm
辊 径 Roll diameter	100	100		100	100
额定厚度 Rated thickness	3.0-12.0mm	3.0-12.0mm		3.0-12.0mm	3.0-12.0mm
最大厚度 Maximum thickness	20.0mm	20.0mm		20.0mm	20.0mm
辊 数 Number of rolls	19	19		19	19
最短工件 Shortest part	160	160	160	160	160
矫平速度 Leveling speed	0-10m/min	0-10m/min	0-10m/min	0-10m/min	0-10m/min
电 压 Voltage	AC三相380VAC 3-phase 380V	AC三相380VAC 3-phase 380V	AC三相380VAC 3-phase 380V	AC三相380VAC 3-phase 380V	AC三相380VAC 3-phase 380V
选 配 Optional	●四/六重式辊以及辊数数量 Four and six-fold rollers and number of rollers ●进出料流水线 Inlet and outflow assembly line		●上下料取料机械手 Loading and unloading manipulator ●支撑轮独立调节 The support roller is adjusted by motor independently		●上下料取料机器人 Loading and unloading robot ●自动检测平台 Automatic detection platform
更大、特殊尺寸、更快速度可按需求订制 Larger, special size, faster speed can be customized according to demand					

*设备参数根据材质(Material)Q235/屈服强度(Yield strength)235MPa计算。

慧Mastery 豪华型 智慧数控精密矫平系列

MASTERY (Deluxe style): Intelligent CNC Leveling machine series

该系列与其它普通整平方法相比，控制系统具有存储、调用、编辑工艺及设备参数功能并具有误操作识别预警功能。10寸高精度触摸屏显示，使用时，在操作台上，可以根据板厚、板宽、材料强度等参数或数据库已有参数设定进、出口压下量，实现工作辊出、入间隙等的电动调整，并可手工调整和修正。相比于传统的手动矫平方法，数控矫平机大大提高了生产效率。适用于要求较高平整度和直度的板材加工。

Compared with other ordinary leveling methods, the series of control systems have the functions of storing, calling, and editing process and equipment parameters, and have the function of identifying and warning of misoperations. The 10-inch high-precision touch screen displays. When in use, on the operating platform, the inlet and outlet reduction can be set according to parameters such as plate thickness, plate width, material strength, or existing parameters in the database, so as to realize the work roll entry and exit clearance, etc. Electric adjustment, and can be adjusted and corrected manually. Compared with traditional manual leveling methods, CNC leveling machines greatly improve production efficiency. Suitable for sheet metal processing that requires higher flatness and straightness.

慧Mastery
豪华型



标杆性能	最快10m/分钟矫平速度；最大0.03-30mm厚度
高性价比	优质性能，超高性价比，最大化的投资价值回报
精密工艺	支撑结构精细，密布式排列，保证矫平质量，减少摩擦，持久稳定
智能操作	智能数控调节，自动化运作，易操作，上手快，智能化管理，提升效率
节能环保	采用精密电机驱动，能耗降低50%，降本增效，环保经济
安全可靠	全面安全保护，误操作预警，保障生产安全
定制灵活	可根据客户需求定制生产，满足不同行业、不同规格的加工需求，为客户量身定制解决方案
高效协同	支持搭配其他设备协同工作，与上下游设备进行联动，实现生产线的高效协调运作

Benchmark performance	The fastest leveling speed is 10m/min; the maximum thickness is 0.03-30mm;
High cost performance	High-quality performance, super cost-effective, maximized return on investment value provide long-lasting stability;
Precision craftsmanship	The support structure is fine and densely arranged to ensure leveling quality, reduce friction and lasting stability;
Intelligent operation	Intelligent CNC adjustment, automated operation, easy to operate, quick to get started, intelligent management, improved efficiency;
Energy saving and environmental protection	Using precision motor drive, energy consumption is reduced by 50%, cost reduction and efficiency increase, environmental protection and economy;
Safe and reliable	Comprehensive safety protection, early warning of misoperation, ensuring production safety;
Flexible customization	We can customize production according to customer needs to meet the processing needs of different industries and specifications, and provide customized solutions for customers;
Efficient collaboration	Supports collaborative work with other equipment and linkage with upstream and downstream equipment to achieve efficient and coordinated operation of the production line.

慧Mastery 豪华型 智慧数控精密矫平系列

MASTERY (Deluxe style): Intelligent CNC Leveling machine series



■ 整平前后对比图

Comparison chart before and after leveling



■ MHT10系列(Series)

厚度(Thickness): 0.03-0.6mm

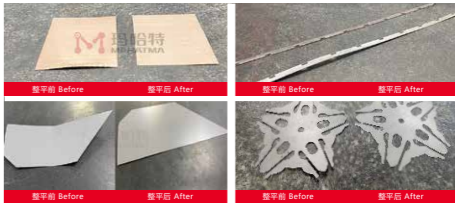
机 型 Model	MHT10-200-25	MHT10-300-25
宽 度 Width	0-200mm	0-300mm
辊 径 Roll diameter	10	10
额定厚度 Rated thickness	0.03-0.6mm	0.03-0.6mm
最大厚度 Maximum thickness	1.0mm	1.0mm
辊 数 Number of rolls	25	25
最短工件 Shortest part	20	20
矫平速度 Leveling speed	0-10m/min	0-10m/min
电 压 Voltage	AC三相380VAC 3-phase 380V	AC三相380VAC 3-phase 380V
选 配 Optional	<ul style="list-style-type: none">●四/六重式辊以及辊数数量 Four and six-fold rollers and number of rollers●进出料流水线 Inlet and outflow assembly line	<ul style="list-style-type: none">●上下料取料机械手 Loading and unloading manipulator●支撑轮独立调节 The support roller is adjusted by motor independently●上下料取料机器人 Loading and unloading robot●自动检测平台 Automatic detection platform
更大、特殊尺寸、更快速度可按需求订制 Larger, special size, faster speed can be customized according to demand		

*设备参数根据材质(Material)Q235/屈服强度(Yield strength)235MPa计算。



■ 整平前后对比图

Comparison chart before and after leveling



■ MHT15系列(Series)

厚度(Thickness): 0.08-1.0mm

机 型 Model	MHT15-200-25	MHT15-300-25	MHT15-400-25	MHT15-600-25
宽 度 Width	0-200mm		0-400mm	0-600mm
辊 径 Roll diameter	15		15	15
额定厚度 Rated thickness	0.08-1.0mm		0.08-1.0mm	0.08-1.0mm
最大厚度 Maximum thickness	2.0mm		2.0mm	2.0mm
辊 数 Number of rolls	25		25	25
最短工件 Shortest part	30		30	30
矫平速度 Leveling speed	0-10m/min		0-10m/min	0-10m/min
电 压 Voltage	AC三相380VAC 3-phase 380V	AC三相380VAC 3-phase 380V	AC三相380VAC 3-phase 380V	AC三相380VAC 3-phase 380V
选 配 Optional	<div><div><div>●四/六重式辊以及辊数数量 Four and six-fold rollers and number of rollers</div><div>●进/出料流水线 Inlet and outflow assembly line</div></div><div><div>●上下料取料机械手 Loading and unloading manipulator</div><div>●支撑轮独立调节 The support roller is adjusted by motor independently</div></div><div><div>●上下料取料机器人 Loading and unloading robot</div><div>●自动检测平台 Automatic detection platform</div></div></div>			
更大、特殊尺寸、更快速度可按需求订制 Larger, special size, faster speed can be customized according to demand				

*设备参数根据材质(Material)Q235/屈服强度(Yield strength)235MPa计算。

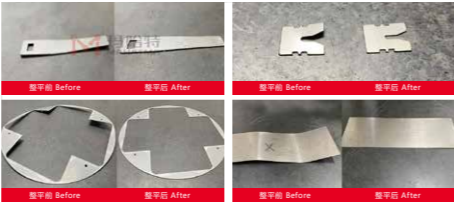
慧Mastery 豪华型 智慧数控精密矫平系列

MASTERY (Deluxe style): Intelligent CNC Leveling machine series



■ 整平前后对比图

Comparison chart before and after leveling



■ MHT20系列(Series)

厚度(Thickness): 0.3-1.2mm

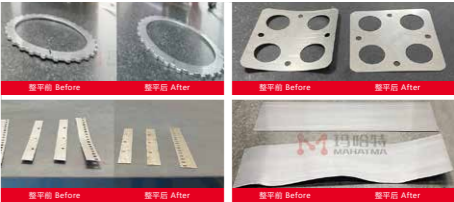
机 型 Model	MHT20-400-23	MHT20-600-23	MHT20-800-23	MHT20-1300-23
宽 度 Width	0-400mm	0-600mm	0-800mm	0-1300mm
辊 径 Roll diameter	20	20	20	20
额定厚度 Rated thickness	0.3-1.2mm	0.3-1.2mm	0.3-1.2mm	0.3-1.2mm
最大厚度 Maximum thickness	3.0mm	3.0mm	3.0mm	3.0mm
辊 数 Number of rolls	23	23	23	23
最短工件 Shortest part	40	40	40	40
矫平速度 Leveling speed	0-10m/min	0-10m/min	0-10m/min	0-10m/min
电 压 Voltage	AC三相380VAC 3-phase 380V	AC三相380VAC 3-phase 380V	AC三相380VAC 3-phase 380V	AC三相380VAC 3-phase 380V
选 配 Optional	<div>●四/六重式辊以及辊数数量 Four and six-fold rollers and number of rollers</div> <div>●进出料流水线 Inlet and outflow assembly line</div> <div>●上下料取料机机械手 Loading and unloading manipulator</div> <div>●支撑轮独立调节 The support roller is adjusted by motor independently</div> <div>●上下料取料机器人 Loading and unloading robot</div> <div>●自动检测平台 Automatic detection platform</div>			
<div>更大、特殊尺寸、更快速度可按需求订制</div> <div>Larger, special size, faster speed can be customized according to demand</div>				

*设备参数根据材质(Material)Q235/屈服强度(Yield strength)235MPa计算。



■ 整平前后对比图

Comparison chart before and after leveling



■ MHT30系列(Series)

厚度(Thickness): 0.5-2.0mm

机 型 Model	MHT30-400-21	MHT30-600-21	MHT30-800-21	MHT30-1000-21	MHT30-1300-21	MHT30-1600-21
宽 度 Width	0-400mm	0-600mm	0-800mm	0-1000mm	0-1300mm	0-1600mm
辊 径 Roll diameter	30	30	30	30	30	30
额定厚度 Rated thickness	0.5-2.0mm	0.5-2.0mm	0.5-2.0mm	0.5-2.0mm	0.5-2.0mm	0.5-2.0mm
最大厚度 Maximum thickness	4.0mm	4.0mm	4.0mm	4.0mm	4.0mm	4.0mm
辊 数 Number of rolls	21	21	21	21	21	21
最短工件 Shortest part	60	60	60	60	60	60
矫平速度 Leveling speed	0-10m/min	0-10m/min	0-10m/min	0-10m/min	0-10m/min	0-10m/min
电 压 Voltage	AC三相380VAC 3-phase 380V	AC三相380VAC 3-phase 380V	AC三相380VAC 3-phase 380V	AC三相380VAC 3-phase 380V	AC三相380VAC 3-phase 380V	AC三相380VAC 3-phase 380V
选 配 Optional	<div><div>●四/六重式辊以及辊数数量 Four and six-fold rollers and number of rollers</div><div>●进出料流水线 Inlet and outflow assembly line</div><div>●上下料取料机械手 Loading and unloading manipulator</div><div>●支撑轮独立调节 The support roller is adjusted by motor independently</div><div>●上下料取料机器人 Loading and unloading robot</div><div>●自动检测平台 Automatic detection platform</div></div>					
<div>更大、特殊尺寸、更快速度可按需求订制</div> <div>Larger, special size, faster speed can be customized according to demand</div>						

*设备参数根据材质(Material)Q235/屈服强度(Yield strength)235MPa计算。

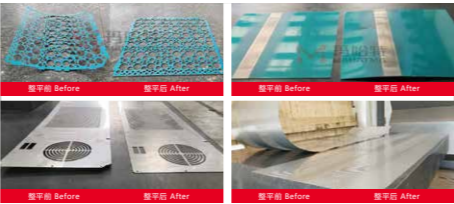
慧Mastery 豪华型 智慧数控精密矫平系列

MASTERY (Deluxe style): Intelligent CNC Leveling machine series



■ 整平前后对比图

Comparison chart before and after leveling



■ MHT40系列(Series)

厚度(Thickness): 0.6-3.0mm

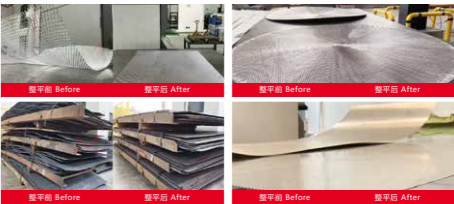
机 型 Model	MHT40-400-21	MHT40-600-21	MHT40-1000-21	MHT40-1300-21	MHT40-1600-21
宽 度 Width	0-400mm	0-600mm	0-1000mm	0-1300mm	0-1600mm
辊 径 Roll diameter	40	40	40	40	40
额定厚度 Rated thickness	0.6-3.0mm	0.6-3.0mm	0.6-3.0mm	0.6-3.0mm	0.6-3.0mm
最大厚度 Maximum thickness	6.0mm	6.0mm	6.0mm	6.0mm	6.0mm
辊 数 Number of rolls	21	21	21	21	21
最短工件 Shortest part	70	70	70	70	70
矫平速度 Leveling speed	0-10m/min	0-10m/min	0-10m/min	0-10m/min	0-10m/min
电 压 Voltage	AC三相380VAC 3-phase 380V	AC三相380VAC 3-phase 380V	AC三相380VAC 3-phase 380V	AC三相380VAC 3-phase 380V	AC三相380VAC 3-phase 380V
选 配 Optional	<div><div><div>●四/六重式辊以及辊数数量 Four and six-fold rollers and number of rollers</div><div>●进出料流水线 Inlet and outflow assembly line</div></div><div><div>●上下料取料机械手 Loading and unloading manipulator</div><div>●支撑轮独立调节 The support roller is adjusted by motor independently</div></div><div><div>●上下料取料机器人 Loading and unloading robot</div><div>●自动检测平台 Automatic detection platform</div></div></div>				
<div>更大、特殊尺寸、更快速度可按需求订制</div> <div>Larger, special size, faster speed can be customized according to demand</div>					

*设备参数根据材质(Material)Q235/屈服强度(Yield strength)235MPa计算。



■ 整平前后对比图

Comparison chart before and after leveling



■ MHT50系列(Series)

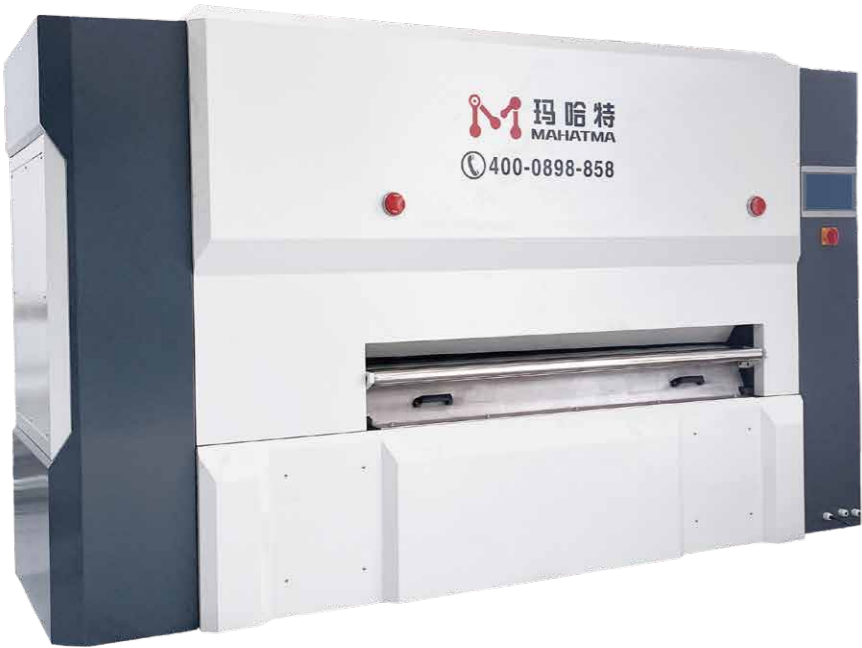
厚度(Thickness): 0.8-4.0mm

机 型 Model	MHT50-400-19	MHT50-600-19	MHT50-1000-19	MHT50-1300-19	MHT50-1700-19
宽 度 Width	0-400mm	0-600mm	0-1000mm	0-1300mm	0-1700mm
辊 径 Roll diameter	50	50	50	50	50
额定厚度 Rated thickness	0.8-4.0mm	0.8-4.0mm	0.8-4.0mm	0.8-4.0mm	0.8-4.0mm
最大厚度 Maximum thickness	8.0mm	8.0mm	8.0mm	8.0mm	8.0mm
辊 数 Number of rolls	19	19	19	19	19
最短工件 Shortest part	90	90	90	90	90
矫平速度 Leveling speed	0-10m/min	0-10m/min	0-10m/min	0-10m/min	0-10m/min
电 压 Voltage	AC三相380VAC 3-phase 380V	AC三相380VAC 3-phase 380V	AC三相380VAC 3-phase 380V	AC三相380VAC 3-phase 380V	AC三相380VAC 3-phase 380V
选 配 Optional	<div><div><div>●四/六重式辊以及辊数数量 Four and six-fold rollers and number of rollers</div><div>●进/出料流水线 Inlet and outflow assembly line</div></div><div><div>●上下料取料机机械手 Loading and unloading manipulator</div><div>●支撑轮独立调节 The support roller is adjusted by motor independently</div></div><div><div>●上下料取料机器人 Loading and unloading robot</div><div>●自动检测平台 Automatic detection platform</div></div></div>				
<div>更大、特殊尺寸、更快速度可按需求订制</div> <div>Larger, special size, faster speed can be customized according to demand</div>					

*设备参数根据材质(Material)Q235/屈服强度(Yield strength)235MPa计算。

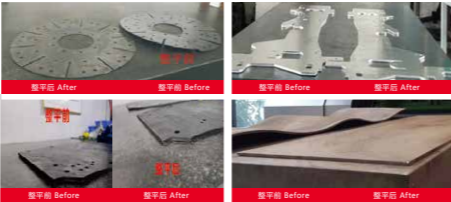
慧Mastery 豪华型 智慧数控精密矫平系列

MASTERY (Deluxe style): Intelligent CNC Leveling machine series



■ 整平前后对比图

Comparison chart before and after leveling



■ MHT60系列(Series)

厚度(Thickness): 1.0-6.0mm

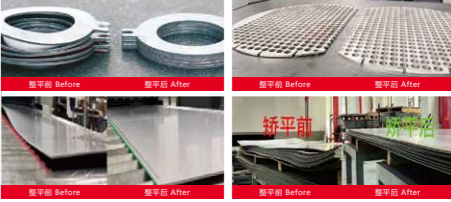
机 型 Model	MHT60-400-19	MHT60-600-19	MHT60-1000-19	MHT60-1300-19	MHT60-1650-19
宽 度 Width	0-400mm	0-600mm	0-1000mm	0-1300mm	0-1650mm
辊 径 Roll diameter	60	60	60	60	60
额定厚度 Rated thickness	1.0-6.0mm	1.0-6.0mm	1.0-6.0mm	1.0-6.0mm	1.0-6.0mm
最大厚度 Maximum thickness	12.0mm	12.0mm	12.0mm	12.0mm	12.0mm
辊 数 Number of rolls	19	19	19	19	19
最短工件 Shortest part	100	100	100	100	100
矫平速度 Leveling speed	0-10m/min	0-10m/min	0-10m/min	0-10m/min	0-10m/min
电 压 Voltage	AC三相380VAC 3-phase 380V	AC三相380VAC 3-phase 380V	AC三相380VAC 3-phase 380V	AC三相380VAC 3-phase 380V	AC三相380VAC 3-phase 380V
选 配 Optional	<div><div><div>●四/六重式辊以及辊数数量 Four and six-fold rollers and number of rollers</div><div>●进出料流水线 Inlet and outflow assembly line</div></div><div><div>●上下料取料机械手 Loading and unloading manipulator</div><div>●支撑轮独立调节 The support roller is adjusted by motor independently</div></div><div><div>●上下料取料机器人 Loading and unloading robot</div><div>●自动检测平台 Automatic detection platform</div></div></div>				
<div>更大、特殊尺寸、更快速度可按需求订制</div> <div>Larger, special size, faster speed can be customized according to demand</div>					

*设备参数根据材质(Material)Q235/屈服强度(Yield strength)235MPa计算。



■ 整平前后对比图

Comparison chart before and after leveling



■ MHT80系列(Series)

厚度(Thickness): 2.0-8.0mm

机 型 Model	MHT80-400-19	MHT80-600-19	MHT80-800-19	MHT80-1400-19	MHT80-1650-19
宽 度 Width	0-400mm	0-600mm	0-800mm	0-1400mm	0-1650mm
辊 径 Roll diameter	80	80	80		80
额定厚度 Rated thickness	2.0-8.0mm	2.0-8.0mm	2.0-8.0mm		2.0-8.0mm
最大厚度 Maximum thickness	16.0mm	16.0mm	16.0mm		16.0mm
辊 数 Number of rolls	19	19	19	19	19
最短工件 Shortest part	130	130	130	130	130
矫平速度 Leveling speed	0-10m/min	0-10m/min	0-10m/min	0-10m/min	0-10m/min
电 压 Voltage	AC三相380VAC 3-phase 380V	AC三相380VAC 3-phase 380V	AC三相380VAC 3-phase 380V	AC三相380VAC 3-phase 380V	AC三相380VAC 3-phase 380V
选 配 Optional	<div><div><div>●四/六重式辊以及辊数数量 Four and six-fold rollers and number of rollers</div><div>●进出料流水线 Inlet and outflow assembly line</div></div><div><div>●上下料取料机械手 Loading and unloading manipulator</div><div>●支撑轮独立调节 The support roller is adjusted by motor independently</div></div><div><div>●上下料取料机器人 Loading and unloading robot</div><div>●自动检测平台 Automatic detection platform</div></div></div>				
<div>更大、特殊尺寸、更快速度可按需求订制</div> <div>Larger, special size, faster speed can be customized according to demand</div>					

*设备参数根据材质(Material)Q235/屈服强度(Yield strength)235MPa计算。

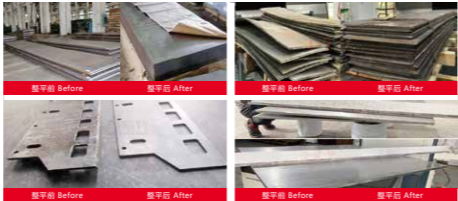
慧Mastery 豪华型 智慧数控精密矫平系列

MASTERY (Deluxe style): Intelligent CNC Leveling machine series



整平前后对比图

Comparison chart before and after leveling



MHT100系列(Series)

厚度(Thickness): 3.0-12.0mm

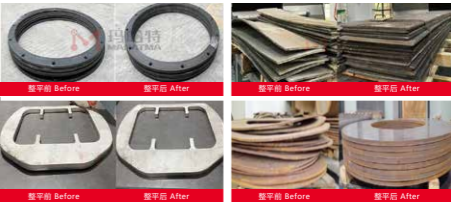
机 型 Model	MHT100-800-19	MHT100-1000-19	MHT100-1400-19	MHT100-1600-19
宽 度 Width	0-800mm	0-1000mm	0-1400mm	0-1600mm
辊 径 Roll diameter	100	100	100	100
额定厚度 Rated thickness	3.0-12.0mm	3.0-12.0mm	3.0-12.0mm	3.0-12.0mm
最大厚度 Maximum thickness	20.0mm	20.0mm	20.0mm	20.0mm
辊 数 Number of rolls	19	19	19	19
最短工件 Shortest part	160	160	160	160
矫平速度 Leveling speed	0-10m/min	0-10m/min	0-10m/min	0-10m/min
电 压 Voltage	AC三相380VAC 3-phase 380V	AC三相380VAC 3-phase 380V	AC三相380VAC 3-phase 380V	AC三相380VAC 3-phase 380V
选 配 Optional	<div><div><ul style="list-style-type: none">● 上下料取料机械手、机器人 Loading and unloading manipulator, robot● 进出料流水线 Inlet and outflow assembly line</div><div><ul style="list-style-type: none">● 四/六重式辊以及辊数数量 Four and six-fold rollers and number of rollers● 支撑轮独立调节 The support roller is adjusted by motor independently</div><div><ul style="list-style-type: none">● 自动检测平台 Automatic detection platform● 滚轮快速清洁装置 Roller quick cleaning device</div></div>			
<div>更大、特殊尺寸、更快速度可按需求订制</div> <div>Larger, special size, faster speed can be customized according to demand</div>				

*设备参数根据材质(Material)Q235/屈服强度(Yield strength)235MPa计算。



整平前后对比图

Comparison chart before and after leveling



MHT120系列(Series)

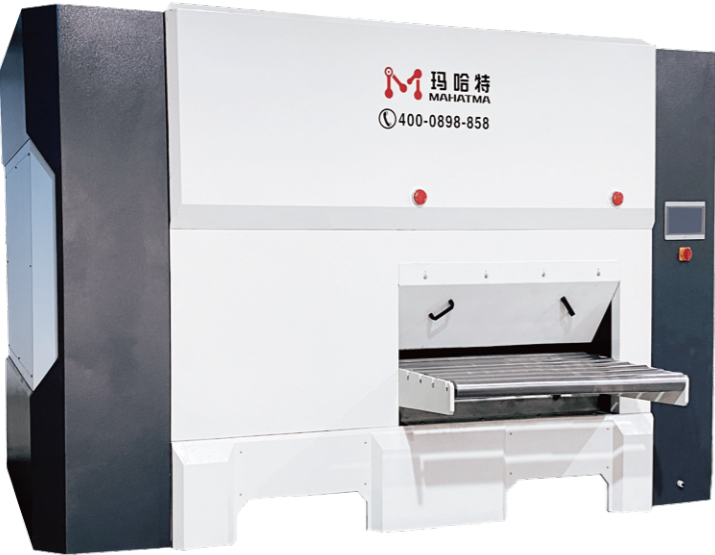
厚度(Thickness): 4.0-16.0mm

机 型 Model	MHT120-400-19	MHT120-800-19	MHT120-1000-19	MHT120-1300-19	MHT120-1600-19
宽 度 Width	0-400mm	0-800mm	0-1000mm	0-1300mm	0-1600mm
辊 径 Roll diameter	120	120	120	120	120
额定厚度 Rated thickness	4.0-16.0mm	4.0-16.0mm	4.0-16.0mm	4.0-16.0mm	4.0-16.0mm
最大厚度 Maximum thickness	25.0mm	25.0mm	25.0mm	25.0mm	25.0mm
辊 数 Number of rolls	19	19	19	19	19
最短工件 Shortest part	190	190	190	190	190
矫平速度 Leveling speed	0-10m/min	0-10m/min	0-10m/min	0-10m/min	0-10m/min
电 压 Voltage	AC三相380VAC 3-phase 380V	AC三相380VAC 3-phase 380V	AC三相380VAC 3-phase 380V	AC三相380VAC 3-phase 380V	AC三相380VAC 3-phase 380V
选 配 Optional	<div><div><ul style="list-style-type: none">● 上下料取料机械手、机器人 Loading and unloading manipulator, robot● 进出料流水线 Inlet and outflow assembly line</div><div><ul style="list-style-type: none">● 四/六重式辊以及辊数数量 Four and six-fold rollers and number of rollers● 支撑轮独立调节 The support roller is adjusted by motor independently</div><div><ul style="list-style-type: none">● 自动检测平台 Automatic detection platform● 滚轮快速清洁装置 Roller quick cleaning device</div></div>				
<div>更大、特殊尺寸、更快速度可按需求订制</div> <div>Larger, special size, faster speed can be customized according to demand</div>					

*设备参数根据材质(Material)Q235/屈服强度(Yield strength)235MPa计算。

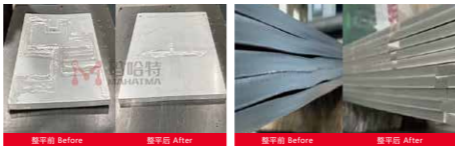
慧Mastery 豪华型 智慧数控精密矫平系列

MASTERY (Deluxe style): Intelligent CNC Leveling machine series



整平前后对比图

Comparison chart before and after leveling



MHT150系列(Series)

厚度(Thickness): 6.0-25.0mm

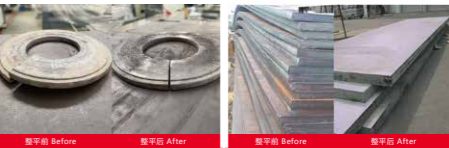
机 型 Model	MHT150-450	MHT150-800	MHT150-1300	MHT150-1600	MHT150-2100
宽 度 Width	0-450mm	0-800mm	0-1300mm	0-1600mm	0-2100mm
辊 径 Roll diameter	150	150	150	150	150
额定厚度 Rated thickness	6.0-25.0mm	6.0-25.0mm	6.0-25.0mm	6.0-25.0mm	6.0-25.0mm
最大厚度 Maximum thickness	30.0mm	30.0mm	30.0mm	30.0mm	30.0mm
辊 数 Number of rolls	15/19	15/19	15/19	15/19	15/19
最短工件 Shortest part	240	240	240	240	240
矫平速度 Leveling speed	0-10m/min	0-10m/min	0-10m/min	0-10m/min	0-10m/min
电 压 Voltage	AC三相380VAC 3-phase 380V	AC三相380VAC 3-phase 380V	AC三相380VAC 3-phase 380V	AC三相380VAC 3-phase 380V	AC三相380VAC 3-phase 380V
选 配 Optional	<div><div><ul style="list-style-type: none">● 上下料取料机机械手、机器人 Loading and unloading manipulator, robot● 进出料流水线 Inlet and outflow assembly line</div><div><ul style="list-style-type: none">● 四/六重式辊以及辊数数量 Four and six-fold rollers and number of rollers● 支撑轮独自调节 The support roller is adjusted by motor independently</div><div><ul style="list-style-type: none">● 自动检测平台 Automatic detection platform● 滚轮快速清洁装置 Roller quick cleaning device</div></div>				
<div>更大、特殊尺寸、更快速度可按需求订制</div> <div>Larger, special size, faster speed can be customized according to demand</div>					

*设备参数根据材质(Material)Q235/屈服强度(Yield strength)235MPa计算。



整平前后对比图

Comparison chart before and after leveling



MHT200系列(Series)

厚度(Thickness): 8.0-30.0mm

机 型 Model	MHT200-1000	MHT200-1300	MHT200-1650	MHT200-2100	MHT200-2300	MHT200-2600	MHT200-3200
宽 度 Width	0-1000mm	0-1300mm	0-1650mm	0-2100mm	0-2300mm	0-2600mm	0-3200mm
辊 径 Roll diameter	200	200	200	200	200	200	200
额定厚度 Rated thickness	8.0-30.0mm	8.0-30.0mm	8.0-30.0mm	8.0-30.0mm	8.0-30.0mm	8.0-30.0mm	8.0-30.0mm
最大厚度 Maximum thickness	40.0mm	40.0mm	40.0mm	40.0mm	40.0mm	40.0mm	40.0mm
辊 数 Number of rolls	19	19	19	19	19	19	19
最短工件 Shortest part	310	310	310	310	310	310	310
矫平速度 Leveling speed	0-10m/min	0-10m/min	0-10m/min	0-10m/min	0-10m/min	0-10m/min	0-10m/min
电 压 Voltage	AC三相380VAC 3-phase 380V	AC三相380VAC 3-phase 380V	AC三相380VAC 3-phase 380V	AC三相380VAC 3-phase 380V	AC三相380VAC 3-phase 380V	AC三相380VAC 3-phase 380V	AC三相380VAC 3-phase 380V
选 配 Optional	<div><div><ul style="list-style-type: none">● 上下料取料机械手、机器人 Loading and unloading manipulator, robot● 进出料流水线 Inlet and outflow assembly line</div><div><ul style="list-style-type: none">● 四/六重式辊以及辊数数量 Four and six-fold rollers and number of rollers● 支撑轮独自调节 The support roller is adjusted by motor independently</div><div><ul style="list-style-type: none">● 自动检测平台 Automatic detection platform● 滚轮快速清洁装置 Roller quick cleaning device</div></div>						
<div>更大、特殊尺寸、更快速度可按需求订制</div> <div>Larger, special size, faster speed can be customized according to demand</div>							

*设备参数根据材质(Material)Q235/屈服强度(Yield strength)235MPa计算。

渺 Vague 基础型 二四重普通矫平系列

VAGUE (Basic style): Two / four layers leveling machine series

该系列矫平机在性能和自动化程度上不如高端矫平机，但其简单的设计、易于操作和维护的特点使其成为许多小型加工企业和低成本生产线的理想选择。旨在利用材料的“包辛格效应”对板材进行多次反复弯曲，以消除材料内应力，矫平材料平面度，达到工艺要求的平整精度！相较于自动化程度高的矫直机，此款矫平机可能需要更多的手动操作，例如手动调节轧辊间隙，更适合小批量生产或低频率的加工需求而且成本相对较低，适合预算有限或对矫直精度要求不高的小型加工场所使用。

This series of levelers are not as good as high-end levelers in terms of performance and automation, but their simple design, easy operation and maintenance make them an ideal choice for many small processing companies and low-cost production lines. It aims to use the "Bauschinger effect" of the material to repeatedly bend the plate to eliminate the internal stress of the material, level the flatness of the material, and achieve the flatness accuracy required by the process! Compared with highly automated straightening machines, this leveling machine may require more manual operations, such as manually adjusting the roll gap. It is more suitable for small batch production or low-frequency processing needs. The cost is relatively low, and it is suitable for those with limited budgets. Or used in small processing sites that do not require high straightening accuracy.



不占空间	紧凑型设计，体积较小，最大化空间利用，适合空间有限的工作环境
节能低碳	低能耗运作，助力企业实现绿色节能，显著降低电力与运营成本
成本效益	设备成本低，适合预算有限或对矫平精度要求不是特别高的场合
提升精度	能够改善材料的平整度，减少因材料瑕疵导致的浪费，提高材料的利用率
技术革新	优化矫平流程，采用先进的反复弯曲技术，节省材料与人工，提高生产效率和经济效益
维护简单	设备的结构相对简单，维护和修理起来通常比较容易，且维护成本较低
投资回报	低成本投入，快速实现投资回报，以较低的成本满足一般的生产需求
适用性	更适合比较单一的产品矫平，精密运作，简单高效

Does not take up space	Compact design, smaller size, maximizes space utilization, suitable for working environments with limited space;
Energy saving and low carbon	Low energy consumption operation helps enterprises achieve green energy saving and significantly reduce power and operating costs;
Improve accuracy	The equipment cost is low and suitable for occasions with limited budget or low leveling accuracy requirements;
Cost-effectiveness	It can improve the flatness of materials, reduce waste caused by material defects, and improve material utilization;
Technological innovation	Optimize the leveling process and adopt advanced repeated bending technology to save materials and labor and improve production efficiency and economic benefits;
Easy maintenance	The structure of the equipment is relatively simple, maintenance and repair are usually easier, and maintenance costs are low;
Return on investment	Low-cost investment, rapid return on investment, and low cost to meet general production needs;
Applicability	More suitable for single product leveling, precise operation, simple and efficient.

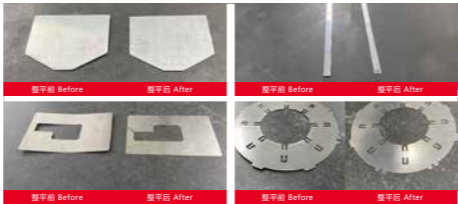
渺 Vague 基础型 四重普通矫平系列

VAGUE (Basic style): Four layers leveling machine series



■ 整平前后对比图

Comparison chart before and after leveling



■ SHS12系列(Series)

厚度(Thickness): 0.03-0.5mm

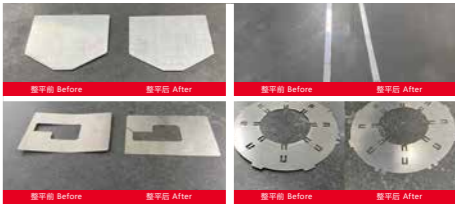
机 型 Model	SHS12-200-19A	SHS12-300-19A	SHS12-400-19A
宽 度 Width	0-200mm	0-300mm	0-400mm
辊 径 Roll diameter	12	12	12
额定厚度 Rated thickness	0.03-0.5mm	0.03-0.5mm	0.03-0.5mm
最大厚度 Maximum thickness	1.0mm	1.0mm	1.0mm
辊 数 Number of rolls	19	19	19
最短工件 Shortest part	20	20	20
矫平速度 Leveling speed	0-10m/min	0-10m/min	0-10m/min
电 压 Voltage	AC三相380VAC 3-phase 380V	AC三相380VAC 3-phase 380V	AC三相380VAC 3-phase 380V
选 配 Optional	<ul style="list-style-type: none">滚轮快速清洁装置 Roller quick cleaning device进出料流水线 Inlet and outflow assembly line	<ul style="list-style-type: none">上下料取料机械手 Loading and unloading manipulator自动堆料升降台 Automatic stacking lifting platform	<ul style="list-style-type: none">上下料取料机器人 Loading and unloading robot自动检测平台 Automatic detection platform
更大、特殊尺寸、更快速度可按需求订制 Larger, special size, faster speed can be customized according to demand			

*设备参数根据材质(Material)Q235/屈服强度(Yield strength)235MPa计算。



■ 整平前后对比图

Comparison chart before and after leveling



■ SHS15系列(Series)

厚度(Thickness): 0.08-1.0mm

机 型 Model	SHS15-200-19A	SHS15-300-19A	SHS15-400-19A
宽 度 Width	0-200mm	0-300mm	0-400mm
辊 径 Roll diameter	15	15	15
额定厚度 Rated thickness	0.08-1.0mm	0.08-1.0mm	0.08-1.0mm
最大厚度 Maximum thickness	1.5mm	1.5mm	1.5mm
辊 数 Number of rolls	19	19	19
最短工件 Shortest part	30	30	30
矫平速度 Leveling speed	0-10m/min	0-10m/min	0-10m/min
电 压 Voltage	AC三相380VAC 3-phase 380V	AC三相380VAC 3-phase 380V	AC三相380VAC 3-phase 380V
选 配 Optional	<ul style="list-style-type: none">滚轮快速清洁装置 Roller quick cleaning device进出料流水线 Inlet and outflow assembly line	<ul style="list-style-type: none">上下料取料机械手 Loading and unloading manipulator自动堆料升降台 Automatic stacking lifting platform	<ul style="list-style-type: none">上下料取料机器人 Loading and unloading robot自动检测平台 Automatic detection platform
更大、特殊尺寸、更快速度可按需求订制 Larger, special size, faster speed can be customized according to demand			

*设备参数根据材质(Material)Q235/屈服强度(Yield strength)235MPa计算。

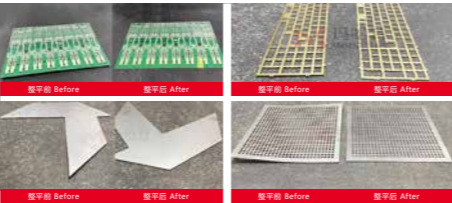
渺 Vague 基础型 四重普通矫平系列

VAGUE (Basic style): Four layers leveling machine series



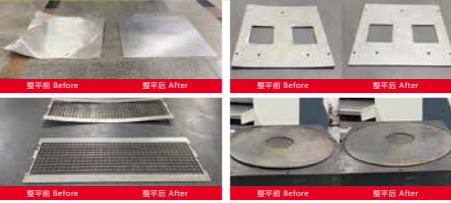
■ 整平前后对比图

Comparison chart before and after leveling



■ 整平前后对比图

Comparison chart before and after leveling



■ SHS32系列(Series)

厚度(Thickness): 0.5-2.0mm

■ SHS20系列(Series)

厚度(Thickness): 0.2-1.5mm

机 型 Model	SHS20-400-19A		SHS20-600-19A	
宽 度 Width	0-400mm		0-600mm	
辊 径 Roll diameter	20		20	
额定厚度 Rated thickness	0.2-1.5mm		0.2-1.5mm	
最大厚度 Maximum thickness	2.0mm		2.0mm	
辊 数 Number of rolls	19		19	
最短工件 Shortest part	40		40	
矫平速度 Leveling speed	0-10m/min		0-10m/min	
电 压 Voltage	AC三相380VAC 3-phase 380V		AC三相380VAC 3-phase 380V	
选 配 Optional	<div><div><ul style="list-style-type: none">● 滚轮快速清洁装置 Roller quick cleaning device● 进出料流水线 Inlet and outflow assembly line</div><div><ul style="list-style-type: none">● 上下料取料机械手 Loading and unloading manipulator● 自动堆料升降台 Automatic stacking lifting platform</div><div><ul style="list-style-type: none">● 上下料取料机器人 Loading and unloading robot● 自动检测平台 Automatic detection platform</div></div>			
更大、特殊尺寸、更快速度可按需求订制 Larger, special size, faster speed can be customized according to demand				

*设备参数根据材质(Material)Q235/屈服强度(Yield strength)235MPa计算。

机 型 Model	SHS32-400-19A	SHS32-600-19A	SHS32-800-19A
宽 度 Width	0-400mm	0-600mm	0-800mm
辊 径 Roll diameter	32	32	32
额定厚度 Rated thickness	0.5-2.0mm	0.5-2.0mm	0.5-2.0mm
最大厚度 Maximum thickness	3.0mm	3.0mm	3.0mm
辊 数 Number of rolls	19	19	19
最短工件 Shortest part	60	60	60
矫平速度 Leveling speed	0-10m/min	0-10m/min	0-10m/min
电 压 Voltage	AC三相380VAC 3-phase 380V	AC三相380VAC 3-phase 380V	AC三相380VAC 3-phase 380V
选 配 Optional	<div><div><ul style="list-style-type: none">● 滚轮快速清洁装置 Roller quick cleaning device● 进出料流水线 Inlet and outflow assembly line</div><div><ul style="list-style-type: none">● 上下料取料机械手 Loading and unloading manipulator● 自动堆料升降台 Automatic stacking lifting platform</div><div><ul style="list-style-type: none">● 上下料取料机器人 Loading and unloading robot● 自动检测平台 Automatic detection platform</div></div>		
更大、特殊尺寸、更快速度可按需求订制 Larger, special size, faster speed can be customized according to demand			

*设备参数根据材质(Material)Q235/屈服强度(Yield strength)235MPa计算。

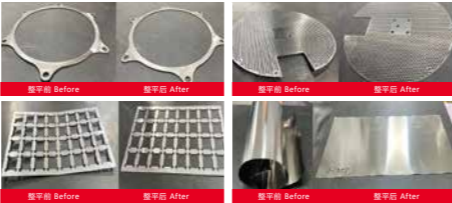
渺 Vague 基础型 四重普通矫平系列

VAGUE (Basic style): Four layers leveling machine series



■ 整平前后对比图

Comparison chart before and after leveling



■ SHS42系列(Series)

厚度(Thickness): 0.6-3.0mm

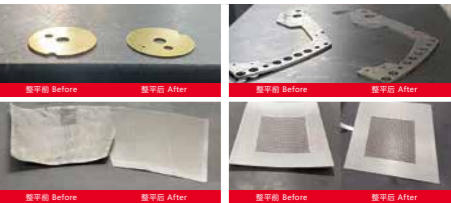
机 型 Model	SHS42-400-19A	SHS42-600-19A	SHS42-800-19A
宽 度 Width	0-400mm	0-600mm	0-800mm
辊 径 Roll diameter	42	42	42
额定厚度 Rated thickness	0.6-3.0mm	0.6-3.0mm	0.6-3.0mm
最大厚度 Maximum thickness	5.0mm	5.0mm	5.0mm
辊 数 Number of rolls	19	19	19
最短工件 Shortest part	70	70	70
矫平速度 Leveling speed	0-10m/min	0-10m/min	0-10m/min
电 压 Voltage	AC三相380VAC 3-phase 380V	AC三相380VAC 3-phase 380V	AC三相380VAC 3-phase 380V
选 配 Optional	<ul style="list-style-type: none">滚轮快速清洁装置 Roller quick cleaning device进出料流水线 Inlet and outflow assembly line	<ul style="list-style-type: none">上下料取料机械手 Loading and unloading manipulator自动堆料升降台 Automatic stacking lifting platform	<ul style="list-style-type: none">上下料取料机器人 Loading and unloading robot自动检测平台 Automatic detection platform
更大、特殊尺寸、更快速度可按需求订制 Larger, special size, faster speed can be customized according to demand			

*设备参数根据材质(Material)Q235/屈服强度(Yield strength)235MPa计算。



■ 整平前后对比图

Comparison chart before and after leveling



■ SHS50系列(Series)

厚度(Thickness): 0.8-3.5mm

机 型 Model	SHS50-400-19A	SHS50-800-19A	SHS50-1000-19A
宽 度 Width	0-400mm	0-800mm	0-1000mm
辊 径 Roll diameter	50	50	50
额定厚度 Rated thickness	0.8-3.5mm	0.8-3.5mm	0.8-3.5mm
最大厚度 Maximum thickness	6.0mm	6.0mm	6.0mm
辊 数 Number of rolls	19	19	19
最短工件 Shortest part	90	90	90
矫平速度 Leveling speed	0-10m/min	0-10m/min	0-10m/min
电 压 Voltage	AC三相380VAC 3-phase 380V	AC三相380VAC 3-phase 380V	AC三相380VAC 3-phase 380V
选 配 Optional	<ul style="list-style-type: none">滚轮快速清洁装置 Roller quick cleaning device进出料流水线 Inlet and outflow assembly line	<ul style="list-style-type: none">上下料取料机械手 Loading and unloading manipulator自动堆料升降台 Automatic stacking lifting platform	<ul style="list-style-type: none">上下料取料机器人 Loading and unloading robot自动检测平台 Automatic detection platform
更大、特殊尺寸、更快速度可按需求订制 Larger, special size, faster speed can be customized according to demand			

*设备参数根据材质(Material)Q235/屈服强度(Yield strength)235MPa计算。

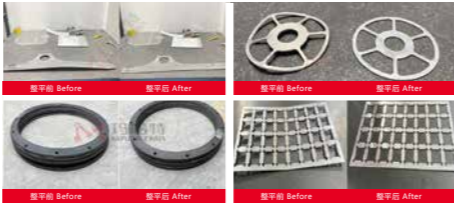
渺 Vague 基础型 四重普通矫平系列

VAGUE (Basic style): Four layers leveling machine series



■ 整平前后对比图

Comparison chart before and after leveling



■ SHS60系列(Series)

厚度(Thickness): 1.0-6.0mm

机 型 Model	SHS60-400-15A	SHS60-600-15A	SHS60-800-15A
宽 度 Width	0-400mm	0-600mm	0-800mm
辊 径 Roll diameter	60	60	60
额定厚度 Rated thickness	1.0-6.0mm	1.0-6.0mm	1.0-6.0mm
最大厚度 Maximum thickness	10.0mm	10.0mm	10.0mm
辊 数 Number of rolls	15	15	15
最短工件 Shortest part	105	105	105
矫平速度 Leveling speed	0-10m/min	0-10m/min	0-10m/min
电 压 Voltage	AC三相380VAC 3-phase 380V	AC三相380VAC 3-phase 380V	AC三相380VAC 3-phase 380V
选 配 Optional	<ul style="list-style-type: none">滚轮快速清洁装置 Roller quick cleaning device进出料流水线 Inlet and outflow assembly line	<ul style="list-style-type: none">上下料取料机械手 Loading and unloading manipulator自动堆料升降台 Automatic stacking lifting platform	<ul style="list-style-type: none">上下料取料机器人 Loading and unloading robot自动检测平台 Automatic detection platform
更大、特殊尺寸、更快速度可按需求订制 Larger, special size, faster speed can be customized according to demand			

*设备参数根据材质(Material)Q235/屈服强度(Yield strength)235MPa计算。



■ 整平前后对比图

Comparison chart before and after leveling



■ SHS80系列(Series)

厚度(Thickness): 2.0-8.0mm

机 型 Model	SHS80-400-15A	SHS80-600-15A	SHS80-800-15A
宽 度 Width	0-400mm	0-600mm	0-800mm
辊 径 Roll diameter	80	80	80
额定厚度 Rated thickness	2.0-8.0mm	2.0-8.0mm	2.0-8.0mm
最大厚度 Maximum thickness	14.0mm	14.0mm	14.0mm
辊 数 Number of rolls	15	15	15
最短工件 Shortest part	130	130	130
矫平速度 Leveling speed	0-10m/min	0-10m/min	0-10m/min
电 压 Voltage	AC三相380VAC 3-phase 380V	AC三相380VAC 3-phase 380V	AC三相380VAC 3-phase 380V
选 配 Optional	<ul style="list-style-type: none">滚轮快速清洁装置 Roller quick cleaning device进出料流水线 Inlet and outflow assembly line	<ul style="list-style-type: none">上下料取料机械手 Loading and unloading manipulator自动堆料升降台 Automatic stacking lifting platform	<ul style="list-style-type: none">上下料取料机器人 Loading and unloading robot自动检测平台 Automatic detection platform
更大、特殊尺寸、更快速度可按需求订制 Larger, special size, faster speed can be customized according to demand			

*设备参数根据材质(Material)Q235/屈服强度(Yield strength)235MPa计算。

渺 Vague 基础型 二重普通矫平系列

VAGUE (Basic style): Two layers leveling machine series



■ 整平前后对比图

Comparison chart before and after leveling



■ STS42系列(Series)

厚度(Thickness): 0.4-3.0mm

机 型 Model	STS42-200-19	STS42-400-19	STS42-600-19	STS42-800-19
宽 度 Width	0-200mm	0-400mm	0-600mm	0-800mm
辊 径 Roll diameter	42	42	42	42
额定厚度 Rated thickness	0.4-3.0mm	0.4-3.0mm	0.4-3.0mm	0.4-3.0mm
最大厚度 Maximum thickness	6.0mm	6.0mm	6.0mm	6.0mm
辊 数 Number of rolls	19	19	19	19
最短工件 Shortest part	70	70	70	70
矫平速度 Leveling speed	0-10m/min	0-10m/min	0-10m/min	0-10m/min
电 压 Voltage	AC三相380VAC 3-phase 380V	AC三相380VAC 3-phase 380V	AC三相380VAC 3-phase 380V	AC三相380VAC 3-phase 380V
选 配 Optional	<div><div><ul style="list-style-type: none">● 滚轮快速清洁装置 Roller quick cleaning device● 进出料流水线 Inlet and outflow assembly line</div><div><ul style="list-style-type: none">● 上下料取料机械手 Loading and unloading manipulator● 自动堆料升降台 Automatic stacking lifting platform</div><div><ul style="list-style-type: none">● 上下料取料机器人 Loading and unloading robot● 自动检测平台 Automatic detection platform</div></div>			
更大、特殊尺寸、更快速度可按需求订制 Larger, special size, faster speed can be customized according to demand				

*设备参数根据材质(Material)Q235/屈服强度(Yield strength)235MPa计算。



■ 整平前后对比图

Comparison chart before and after leveling



■ STS70系列(Series)

厚度(Thickness): 1.0-6.0mm

机 型 Model	STS70-400-13	STS70-600-13	STS70-1300-13
宽 度 Width	0-400mm	0-600mm	0-1300mm
辊 径 Roll diameter	70	70	70
额定厚度 Rated thickness	1.0-6.0mm	1.0-6.0mm	1.0-6.0mm
最大厚度 Maximum thickness	10.0mm	10.0mm	10.0mm
辊 数 Number of rolls	13	13	13
最短工件 Shortest part	120	120	120
矫平速度 Leveling speed	0-10m/min	0-10m/min	0-10m/min
电 压 Voltage	AC三相380VAC 3-phase 380V	AC三相380VAC 3-phase 380V	AC三相380VAC 3-phase 380V
选 配 Optional	<ul style="list-style-type: none">● 滚轮快速清洁装置 Roller quick cleaning device● 进出料流水线 Inlet and outflow assembly line	<ul style="list-style-type: none">● 上下料取料机械手 Loading and unloading manipulator● 自动堆料升降台 Automatic stacking lifting platform	<ul style="list-style-type: none">● 上下料取料机器人 Loading and unloading robot● 自动检测平台 Automatic detection platform
更大、特殊尺寸、更快速度可按需求订制 Larger, special size, faster speed can be customized according to demand			

*设备参数根据材质(Material)Q235/屈服强度(Yield strength)235MPa计算。

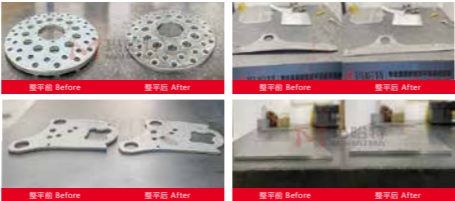
渺 Vague 基础型 二重普通矫平系列

VAGUE (Basic style): Two layers leveling machine series



■ 整平前后对比图

Comparison chart before and after leveling



■ 整平前后对比图

Comparison chart before and after leveling



■ STS90系列(Series)

厚度(Thickness): 2.0-8.0mm

机 型 Model	STS90-600-13	STS90-1000-13	STS90-1300-13
宽 度 Width	0-600mm	0-1000mm	0-1300mm
辊 径 Roll diameter	90	90	90
额定厚度 Rated thickness	2.0-8.0mm	2.0-8.0mm	2.0-8.0mm
最大厚度 Maximum thickness	14.0mm	14.0mm	14.0mm
辊 数 Number of rolls	13	13	13
最短工件 Shortest part	150	150	150
矫平速度 Leveling speed	0-10m/min	0-10m/min	0-10m/min
电 压 Voltage	AC三相380VAC 3-phase 380V	AC三相380VAC 3-phase 380V	AC三相380VAC 3-phase 380V
选 配 Optional	<ul style="list-style-type: none">滚轮快速清洁装置 Roller quick cleaning device进出料流水线 Inlet and outflow assembly line	<ul style="list-style-type: none">上下料取料机械手 Loading and unloading manipulator自动堆料升降台 Automatic stacking lifting platform	<ul style="list-style-type: none">上下料取料机器人 Loading and unloading robot自动检测平台 Automatic detection platform
更大、特殊尺寸、更快速度可按需求订制 Larger, special size, faster speed can be customized according to demand			

*设备参数根据材质(Material)Q235/屈服强度(Yield strength)235MPa计算。

■ STS120系列(Series)

厚度(Thickness): 3.0-10.0mm

机 型 Model	STS120-600-13	STS120-1000-13	STS120-1400-13
宽 度 Width	0-600mm	0-1000mm	0-1400mm
辊 径 Roll diameter	120	120	120
额定厚度 Rated thickness	3.0-10.0mm	3.0-10.0mm	3.0-10.0mm
最大厚度 Maximum thickness	20.0mm	20.0mm	20.0mm
辊 数 Number of rolls	13	13	13
最短工件 Shortest part	195	195	195
矫平速度 Leveling speed	0-10m/min	0-10m/min	0-10m/min
电 压 Voltage	AC三相380VAC 3-phase 380V	AC三相380VAC 3-phase 380V	AC三相380VAC 3-phase 380V
选 配 Optional	<ul style="list-style-type: none">滚轮快速清洁装置 Roller quick cleaning device进出料流水线 Inlet and outflow assembly line	<ul style="list-style-type: none">上下料取料机械手 Loading and unloading manipulator自动堆料升降台 Automatic stacking lifting platform	<ul style="list-style-type: none">上下料取料机器人 Loading and unloading robot自动检测平台 Automatic detection platform
更大、特殊尺寸、更快速度可按需求订制 Larger, special size, faster speed can be customized according to demand			

*设备参数根据材质(Material)Q235/屈服强度(Yield strength)235MPa计算。

自动化智慧工厂

Automated smart factory

自动平面度检测仪

Automatic flatness detector

- 钢板平面度自动检测设备是用于检测和评估钢板平整度的高科技仪器。这种设备通常在金属加工、钢铁生产和质量控制等行业中使用，以确保钢板满足特定的制造标准和客户要求。钢板平面度自动检测设备的关键特点和组成部分：
- 传感器技术：自动检测设备通常配备一系列高精度的传感器，如激光传感器、接触式位移传感器或非接触式光学传感器，用来测量钢板表面的微小高低差异。
- 扫描系统：为了全面检测钢板的平面度，设备可能包含一个扫描系统，能够覆盖整个钢板表面，有时是通过移动钢板或移动传感器来实现。
- 数据采集和处理：检测设备通常包括一个数据采集单元，能够捕获传感器提供的数据，并将其传输到中央处理单元。在这里，数据会被分析和处理，以计算平面度并生成报告。
- 控制软件：专门的软件用来控制检测过程，提供用户界面，显示实时数据，并允许操作人员设置检测参数、启动扫描和查看结果。
- 自动化和集成能力：现代的钢板平面度检测设备可以集成到生产线中，与其他机器和系统自动化地协同工作，提高效率并减少人为错误。
- 报告和文档：设备能够生成详细的检测报告，这些报告可以用于质量保证、客户沟通或进一步的数据分析。
- 标准和规范遵从性：自动检测设备通常设计用来遵守国际和行业标准，确保钢板产品能够满足严格的质量要求。
- 维护和校准：为了保证持续的准确性，这些设备需要定期维护和校准。
- 钢板平面度自动检测设备的使用可以显著提高产品质量控制的效率和准确性，减少废品率，并帮助制造商优化生产流程。这些设备是现代化工业制造中不可或缺的一部分，特别是在对平面度要求较高的应用领域，如汽车、航空航天和精密工程行业。
- The automatic flatness testing equipment is a high-tech instrument used to test and evaluate the flatness of steel plate. Such equipment is commonly used in industries such as metalworking, steel production and quality control to ensure that steel plates meet specific manufacturing standards and customer requirements. Key features and components of automatic flatness testing equipment for steel plate.
- Sensor technology: automatic inspection equipment is usually equipped with a series of high-precision sensors, such as laser sensors, contact displacement sensors or non-contact optical sensors, used to measure small height difference of steel plate surface.
- Scanning system: to fully measure the flatness of a plate, the device may include a scanning system that covers the entire surface of the plate, sometimes by moving the plate or moving the sensor.
- Data acquisition and processing: the detection equipment usually includes a data acquisition unit, which can capture the data provided by the sensor and transmit it to the central processing unit. Here the data is analyzed and processed to calculate flatness and generate reports.
- Control Software: special software to control the detection process, provide user interface, display real-time data, and allow operators to set detection parameters, start scanning and view the results.
- Automation and integration capabilities: modern flatness testing equipment can be integrated into the production line and work with other machines and systems automatically to improve efficiency and reduce human error.

- Reports and documentation: the facility can generate detailed inspection reports that can be used for quality assurance, customer communication, or further data analysis.
- Standard and specification compliance: automatic testing equipment is usually designed to comply with international and industry standards to ensure that steel plate products meet stringent quality requirements.
- Maintenance and calibration: these devices require regular maintenance and calibration to ensure continuous accuracy.
- The use of automatic flatness testing equipment can significantly improve the efficiency and accuracy of product quality control, reduce reject rate, and help manufacturers optimize production processes. These devices are an integral part of modern industrial manufacturing, especially in applications requiring high flatness, such as automotive, aerospace, and precision engineering industries.



自动化智慧工厂

Automated smart factory



- 

自动上料
Automatic feeding
- 

精密矫平
Precision leveling
- 

提升效率
Improve efficiency
- 

高效切割
Efficiency cutting
- 

节省成本
Saving cost
- 

减少浪费
Reduce waste

■ 激光开卷落料线
Laser coil blanking line

激光开卷落料线是使用自动化开卷机和矫平机，可以连续地将卷料展平并送入后续工序。这一生产线不仅能够实现高效、高速的卷料开平操作，且高精度的激光切割机可以根据数字化设计文件对钢板进行快速、精准的切割，可搭配使用机械手臂或自动输送系统，以实现材料的自动收料和上料，减少人工操作，提高生产效率。多功能性使其适用于不同材料和各种应用场景，同时具备优化材料利用率、节能环保、实时监控等多个优势。具有高效生产、精准开平、精细切割、多功能、自动化控制和节省能源等特点，为企业提升生产效率、降低成本、提高产品质量与控制安全隐患提供可靠解决方案。

The laser coil blanking line uses automatic uncoiling machine and Leveler, which can flatten the material continuously and send it to the following process. The production line not only enables efficient, high-speed winding operations in uncoiling, but also high-precision laser cutters that can quickly and accurately cut steel plates according to digital design documents, with the use of robotic hands, or automatic conveying system to achieve the automatic material collection and feeding, reduce manual operation, improve production efficiency. The multi-function makes it suitable for different materials and various application scenarios, and has many advantages such as optimizing material utilization rate, energy saving, environmental protection, real-time monitoring and so on. It is characterized by efficient production, precision uncoiling, fine cutting, multi-function, automatic control and energy saving, to provide reliable solutions for enterprises to improve production efficiency, reduce costs, improve product quality and control safety risks.

机 型 Model	宽度 Thickness	厚度 Width	速度 Speed	定位精度 Accurate positioning	料重 Material weights	加速度 Acceleration	矫平款式 Leveling style	激光功率 Laser power	激光切割幅面 Laser cutting surface
T2	1800	3.0mm	35m/min	±0.02mm	5T-20T可选	1.5g	数控式	2000w-20000w (可选)	3015/4015/ 6015/6020/12020
T2S	2800	10.0mm	35m/min	±0.02mm	5T-30T可选	1.5g	数控式/液压式	2000w-20000w (可选)	3015/4015/ 6015/6020/8020
T3	1800	3.0mm	35m/min	±0.02mm	5T-20T可选	1.5g	数控式	2000w-20000w (可选)	3015/4015/ 6015/6020/12020
T3S	2800	10.0mm	35m/min	±0.02mm	5T-20T可选	1.5g	数控式/液压式	2000w-20000w (可选)	3015/4015/ 6015/6020/12020
T5S双头	2800	10.0mm	35m/min	±0.02mm	5T-30T可选	1.5g	数控式/液压式	2000w-20000w (可选)	6015/6020/8020
T6S多头	2800	10.0mm	35m/min	±0.02mm	5T-20T可选	1.5g	数控式/液压式	2000w-20000w (可选)	6015/6020/ 8020/12020
T7	2800	12.0mm	35m/min	±0.02mm	5T-20T可选	1.5g	数控式/液压式	2000w-20000w (可选)	6020/8020/ 10020/12020
部分参数仅供参考，实际参数信息以按需定制为准 Some parameters are for reference only, the actual parameter information is subject to customization on demand									

选配搭载(Optional loading)



自动化智慧工厂

Automated smart factory

- 

高速上料
High speed
feeding
- 

自动下料
Automatic
blanking
- 

精准切割
Precision
Cutting
- 

精密矫平
Precision leveling
- 

节省成本
Save costs
- 

减少浪费
Reduce waste

机 型 Model	宽度 Width	厚度 Thickness	重量 Weights	精度 Flatness	速度 Speed
M2	600/800/1000/ 1300/1600/2100	0.3-2.0mm	5T-10T	0.1-0.3mm	0-10m(可加速) (Can Be Accelerated)
M3	600/800/1000/ 1300/1600/2100	1.0-6.0mm	5T-20T	0.1-0.3mm	0-10m(可加速) (Can Be Accelerated)
M4	600/800/1000/ 1300/1600/2100	2.0-8.0mm	10T-30T	0.1-0.3mm	0-10m(可加速) (Can Be Accelerated)

部分参数仅供参考，实际参数信息以按需定制为准
Some parameters are for reference only, the actual parameter information is subject to customization on demand

■ 高精密自动开卷矫平剪切线

High-precision automatic uncoiling, leveling and shearing line

高精密自动开卷矫平剪切线是一种先进的金属加工设备，专为高效、精确地处理各种金属材料而设计。该设备集自动开卷、矫平和剪切于一体，能够确保金属材料在加工过程中的平整度和尺寸精度。通过采用高端的控制系统和精密机械结构，高精密自动开卷矫平剪切线能够实现连续、自动化的生产作业，大幅提高生产效率和加工质量。确保剪切后的产品具有更高的质量标准。此外，该设备还具备智能化的操作界面，通过精准的数据分析和实时监控，实现对生产过程的精细管理，从而降低生产成本，提高生产效率，为企业带来更大的市场竞争力。此外，该设备的应用范围广泛，不仅适用于不同类型和规格的金属材料，还能满足汽车、家电、建筑等多个行业的高标准要求。

High-precision automatic uncoiling and leveling shear line is an advanced metal processing equipment, designed for efficient and accurate treatment of various metal materials. The equipment integrates automatic unwinding, leveling and shearing, which can ensure the flatness and dimensional accuracy of metal materials in the process of machining. By using high-end control system and precision mechanical structure, high-precision automatic uncoiling leveling shear line can realize continuous and automatic production, greatly improve production efficiency and processing quality. Ensure that the cut product has a higher quality standard. In addition, the device also has an intelligent operation interface, through accurate data analysis and real-time monitoring, to achieve fine management of the production process, thereby reducing production costs and improving production efficiency, bring greater market competitiveness for enterprises. In addition, the equipment is widely used, not only for different types and specifications of metal materials, but also to meet the automotive, home appliances, construction and other industries of high standards.

选配搭载(Optional loading)

自动桁架 Automatic truss	机器人 Robots	码垛机 Palletizing machine
		

自动化智慧工厂

Automated smart factory



三维检测
Three-dimensional
detection

精密矫平
Precision leveling

实时修正
Real-time correction

提升效率
Improve efficiency

节省成本
Save costs

detection, automatic leveling, automatic plane accuracy detection, automatic determination Ng/OK, automatic classification, automatic blanking, automatic palletizing and so on, the automatic production from raw materials to finished products is realized.

First of all, the automatic feeding link of the joint robot, through the highly flexible manipulator to achieve the accurate grasping and positioning of the steel plate. Subsequently, the automatic size detection link of the steel plate length, width, thickness and other basic dimensions of accurate measurement for the follow-up leveling and flatness detection to provide basic data. In the auto-levelling process, the pressure and speed of the leveler are adjusted by the high-precision control system according to the data of the previous dimension test. Then, in the plane precision automatic detection link, the use of high-precision laser scanner and other detection equipment, real-time on-line monitoring of the flatness and warpage of steel plate to ensure that each plate meets the requirements of high standards of flatness. Once detected, the system will automatically determine as NG (nonconforming product), and through the automatic classification system will be sorted out, to avoid the next production link. For OK (qualified product) steel plate, then continue to carry out automatic blanking, automatic palletizing and other follow-up processing, the final realization of automatic smart factory of finished products.

自动矫平检测线

Automatic detection line

该自动生产线的核心在于实现钢板的高精密矫平和平面度的在线检测，以及依据设定的板翘公差标准自动判定合格品与不合格品（NG/OK），并进行自动分类。整个生产线包括关节机器人自动上下料、自动关产品尺寸检测、自动矫平、平面精度自动检测、自动判定NG/OK、自动分类、自动下料、自动码垛等环节，实现了从原材料到成品的全自动化生产。

首先关节机器人自动上料环节，通过高度灵活的机械臂实现对钢板的精准抓取和定位。随后，自动关产品尺寸检测环节对钢板的长度、宽度、厚度等基本尺寸进行精确测量，为后续的矫平和平面度检测提供基础数据。在自动矫平环节，依据前期尺寸检测的数据，通过高精度控制系统调整矫平机的压力和速度，确保钢板在矫平过程中达到预定的平面度要求。紧接着，在平面精度自动检测环节，采用高精度的激光扫描仪等检测设备，实时在线监测钢板的平面度和翘曲度，确保每一块钢板都符合高标准的平面度要求。一旦检测到不符合设定IPC板翘公差标准的钢板，系统将自动判定为NG（不合格品），并通过自动分类系统将其分选出来，避免进入下一生产环节。对于判定为OK（合格品）的钢板，则继续进行自动下料、自动码垛等后续处理，最终实现成品的自动自动化智慧工厂。

The core of the automatic production line is to realize the on-line detection of high precision levelling and flatness of steel plate, and to judge the qualified and unqualified products (NG/OK) automatically according to the set tolerance standard of plate warping, and to carry out automatic classification. The whole production line includes joint robot automatic loading and unloading, automatic closing product size

选配搭载(Optional loading)



自动化智慧工厂

Automated smart factory



实时修正

Real-time correction



精密矫平

Precision leveling



高速上料

High speed feeding



提升效率

Improve efficiency



杜绝翻工

No rework

机 型 Model	宽度 Width	厚度 Thickness	重量 Weights	精度 Flatness	速度 Speed
M2	600/800/1000/ 1300/1600/2100	0.3-2.0mm	5T-10T	0.1-0.3mm	0-10m(可加速) (Can Be Accelerated)
M3	600/800/1000/ 1300/1600/2100	1.0-6.0mm	5T-20T	0.1-0.3mm	0-10m(可加速) (Can Be Accelerated)
M4	600/800/1000/ 1300/1600/2100	2.0-8.0mm	10T-30T	0.1-0.3mm	0-10m(可加速) (Can Be Accelerated)

部分参数仅供参考，实际参数信息以按需定制为准

Some parameters are for reference only, the actual parameter information is subject to customization on demand

■ 高精密自动开卷矫平冲压线

High-precision automatic uncoiling, leveling and stamping line

高精密自动开卷矫平冲压线是一种集现代化控制技术与精密机械加工于一体的高端设备，广泛应用于金属加工、汽车制造、电子产品等领域。该设备通过自动化控制系统精确调节材料的开卷、矫直、送料等过程，确保材料在冲压过程中的平整度和精确度，大幅提高了生产效率和产品质量。高精密自动开卷矫平冲压线采用先进的传感器和控制算法，能够实时监控和调整生产过程，适应不同厚度和材质的金属板材，满足多变的市场需求。此外，该设备还具有操作简便、维护成本低、能耗低等特点，为制造业带来了革命性的生产力提升。可以显著减少人力成本，提升市场竞争力。同时，高精密的矫平控制系统可以确保每一步骤的加工精度，从而保证最终产品的质量稳定性和一致性。

The high-precision automatic uncoiling, leveling and stamping line is a high-end equipment which integrates modern control technology and precision machining. Through automatic control system, the process of uncoiling, straightening and feeding can be adjusted accurately to ensure the smoothness and accuracy of the material in the stamping process, and greatly improve the production efficiency and product quality. The high-precision auto-uncoiling and levelling stamping line adopts advanced sensors and control algorithms, which can monitor and adjust the production process in real time, adapt to different thickness and material of metal sheet, and meet the changing market demand. In addition, the equipment also has easy to operate, low maintenance costs, low energy consumption and other features for the manufacturing industry has brought a revolutionary increase in productivity. Can significantly reduce human costs, enhance market competitiveness. At the same time, high-precision leveling control system can ensure the precision of each step, thus ensuring the stability and consistency of the final product quality.

选配搭载(Optional loading)

自动桁架

Automatic truss

机器人

Robots

码垛机

Palletizing machine





高精密矫平
High precision leveling



快速去毛刺
Quick deburring





提升效率
Improve efficiency



减少浪费
Reduce waste



节省成本
Reduce costs



节能减排
Energy saving and
emission reduction

■ 矫平去毛刺自动化生产线

Leveling and deburring automated production line

该产线是一种集去毛刺、矫平和生产自动化于一体的自动化产线。它通过整合去毛刺机、矫平机和自动化控制系统，以去除对金属材料或零件切割或冲压后的毛刺，能够快速高效地去除零件表面的各种毛刺和矫平材料表面精度，并大大提高下游工序的顺利进行，是现代钣金加工中必不可少的产线设备。

快速而准确地去除金属卷材表面的毛刺，提高去毛刺的速度和效率，确保金属卷材的平整度和尺寸精度达到要求。能够实现连续、高效的生产作业，且有效减少人力成本，并降低生产过程中的人为误差风险，避免了由于不准确操作而造成的浪费，提高原材料的利用率。

The production line is a set of deburring, leveling and production automation in one of the automatic production line. By integrating deburring machines, levelers and automatic control systems to remove burrs after cutting or stamping of metal materials or parts, it can remove all kinds of burrs and straighten the material surface quickly and efficiently, and greatly improve the downstream process. It is an essential production line equipment in modern sheet metal processing.

The Burr on the surface of the metal coil can be removed quickly and accurately, and the speed and efficiency of burr removal can be improved. It can realize continuous and efficient production, reduce labor cost, reduce the risk of human error, avoid waste caused by inaccurate operation, and improve the utilization of raw materials.

宽度 Thickness	厚度 Width	速度 Speed	最小工件尺寸 Minimum workpiece size	矫平精度 Leveling accuracy
0-600mm	0.5-80mm	20m/min	50x50mm	0.1-0.3mm
0-800mm	0.5-80mm	20m/min	50x50mm	0.1-0.3mm
0-1000mm	0.5-80mm	20m/min	50x50mm	0.1-0.3mm
0-1300mm	0.5-80mm	20m/min	50x50mm	0.1-0.3mm

部分参数仅供参考，实际参数信息以按需定制为准
Some parameters are for reference only, the actual parameter information is subject to customization on demand

选配搭载(Optional loading)

自动桁架
Automatic truss

机器人
Robots

码垛机
Palletizing machine





- 三维检测
3D inspection
- 精密矫平
Precision leveling
- 提升效率
Improve efficiency
- 减少浪费
Reduce waste
- 节省成本
Reduce costs
- 节能减排
Energy saving and emission reduction

bending of materials, and finally complete the production of high-quality products through robot welding technology. The design of the whole production line fully considers the convenience of user operation, ensures the production process with high efficiency and high stability, and greatly reduces the labor cost and time cost. We offer the perfect solution for all kinds of manufacturing needs, whether it is automotive manufacturing, electronics, household appliances or precision machinery manufacturing. Another significant advantage of this one-stop solution is its flexibility and scalability. Due to the modular design, companies can flexibly select and combine different functional modules according to their production needs and scale, such as adding specific functions such as deburring, inspection, welding or bending. This flexibility makes the fully automatic high-precision uncoiling, leveling, feeding, shearing and bending robot welding line not only suitable for large-scale production, but also for small batches and diversified customized production needs. Contributes to the safety of the production process. Traditional production lines often involve a lot of manual operation, and there are certain safety risks. The fully automated production line minimizes direct human involvement, avoids workplace accidents through precise machine operation, and provides a safer working environment for employees. This highly automated production line not only reduces the need for manual operation and labor costs, but also greatly improves production efficiency and processing accuracy, and ensures the consistency and reliability of product quality. It provides strong support for the development of the manufacturing industry! Not only can you optimize your production process, but also can bring you greater market competitiveness, your production efficiency will be a qualitative leap, product quality will also be greatly improved. With the continuous progress of technology and the continuous expansion of applications, its role in the future manufacturing industry will become more and more important, and it deserves extensive attention and active investment inside and outside the industry.

■ 全自动成型线 (含上料、矫平、送料、剪切、折弯、焊接等)
High-precision uncoiling, leveling, feeding, shearing, bending and welding

全自动成型线采用最先进的自动化技术，能够实现材料的快速开卷、精确矫平、自动送料、高效剪切和精密折弯，最终通过机器人焊接技术完成高质量产品的生产。整个生产线的设计充分考虑了用户操作的便捷性，确保了高效率和高稳定性的生产过程，大大减少了人力成本和时间成本。针对各种制造业需求，无论是汽车制造、电子产品、家用电器还是精密机械制造，都能够提供完美的适配方案。这种一站式解决方案的另一个显著优势是其灵活性和可扩展性。由于采用了模块化设计，企业可以根据自身的生产需求和规模，灵活选择和组合不同的功能模块，如增加特定的去毛刺、检测、焊接或折弯等功能。这种灵活性使得全自动高精密开卷矫平送料剪切折弯机器人焊接线不仅适用于大规模生产，也能满足小批量、多样化的定制化生产需求。有助于提高生产过程的安全性。传统的生产线往往涉及大量的人工操作，存在一定的安全风险。而全自动化的生产线最大限度地减少了人工直接参与，通过精确的机器操作来避免工伤事故，为员工提供了一个更安全的工作环境。这种高度的全自动化生产线不仅减少了人为操作的需要，降低了劳动成本，也大大提高了生产效率和加工精度，确保了产品质量的一致性和可靠性。为制造业的发展提供了强有力的支持！不仅能够优化您的生产流程，还能够为您带来更大的市场竞争力，您的生产效率将得到质的飞跃，产品质量也将得到大幅度提升。随着技术的不断进步和应用的不断扩展，其在未来制造业中的作用将越来越重要，值得行业内外外的广泛关注和积极投入。

The fully automatic high-precision uncoiling, leveling, feeding, shearing, bending and welding line adopts the most advanced automation technology, which can realize the rapid uncoiling, precise leveling, automatic feeding, efficient shearing and precision

选配搭载(Optional loading)



客户需求解决方案与案例

Customer demand solutions
and cases

01

高品质焊接提升解决方案

High quality welding improvement solutions

该方案适用于对焊接品质和效率要求较高的金属加工、汽车与机械制造等行业客户。

This solution is suitable for customers in metal processing, automobile and machinery manufacturing and other industries that have high requirements for welding quality and efficiency.

■ 提升焊接品质与标准，巩固产品竞争力

Improve welding quality and standards and
consolidate product competitiveness

使用经过矫平处理的材料和零件进行焊接可以提升产品的质量、稳定性和外观精度。因此，我们的焊接品质提升方案特别适合汽车制造和机械制造行业的客户，帮助他们提高焊接效率，减少前期准备工作，降低温度变化和材料变形，以获得更好的焊接结果。无论是大型制造企业还是小型车间，我们都能根据客户的需求提供定制化的解决方案，以满足其特定行业的要求。



Using leveled materials and parts for welding can improve product quality, stability and appearance accuracy. Therefore, our welding quality improvement program is particularly Suitable for customers in the automotive manufacturing and machinery manufacturing industries to help them improve welding efficiency, reduce preliminary preparation work, reduce temperature changes and material deformation to obtain better Good welding results. Whether it's a large manufacturing company or a small workshop, we can Provide customized solutions based on customer needs to meet their specific industry Require.

02

高性能产品装配解决方案

High performance product assembly solutions

该方案适用于想提升自己产品稳定性、精密的装配操作的机械配件、电子零件等行业客户。

This solution is suitable for customers in industries such as mechanical parts and electronic parts who want to improve the stability of their products and precise assembly operations.



■ 高端数控矫平能力，0.1mm的精度保障

High-end CNC leveling capability, 0.1mm accuracy guarantee

通过采用先进的数控矫平设备和技术以及自动化控制系统，再结合玛哈特专利的制造工艺，可以帮助客户实现特定产品的板材或零件对高精度的矫平要求。通过实时监测材料平整度和应用自动化控制系统，能够实现高精度的矫平。这能确保材料和零件的笔直度和平整度达到所需的精度标准。

By using advanced CNC leveling equipment and technology and automated control systems, combined with MAHATMA's patented manufacturing process, we can help customers achieve high-precision leveling requirements for plates or parts of specific products. By monitoring material flatness in real time and applying automated control systems, high-precision leveling can be achieved. This ensures that materials and parts are straight and flat to the required accuracy standards.

■ 提高装配速度和精确度

Improve assembly speed and accuracy

由于经过矫平处理的零件尺寸稳定，配件在组装时能够更快速、更精确地拼配。这可以提高装配速度，减少调整和校准的时间，提高生产效率。同时，装配的精确度也会得到提高，确保产品在光学和技术方面具有更高的质量。

Because the flattened parts are dimensionally stable, parts can be assembled more quickly and accurately during assembly. This increases assembly speed, reduces adjustment and calibration time, and increases production efficiency. At the same time, the precision of assembly will be improved, ensuring a higher optical and technical quality of the product.

客户需求解决方案与案例

Customer demand solutions
and cases

高精度激光切割解决方案 High-precision laser cutting solutions

03

该方案适用于激光切割/CNC加工过程后，导致材料发生热变形问题的机箱机柜、钣金加工、激光代工、建筑板材等相关行业客户。

This solution is suitable for customers in related industries such as chassis cabinets, sheet metal processing, laser OEM, building panels and other related industries that cause thermal deformation of materials after the laser cutting/CNC processing process.

■ 杜绝材料变形影响，减少材料返工

Eliminate the impact of material deformation and reduce material rework

通过我们的高精度激光切割解决方案，客户可以最大限度地减少热变形对加工结果的影响，保证加工精度和产品质量。我们致力于提供定制化的解决方案，以满足客户在激光切割和CNC加工过程中的高精度要求。通过我们的解决方案，客户可以实现生产效率的提升，废品率和返工率的降低，从而提高竞争力和盈利能力。

Through our high-precision laser cutting solutions, customers can minimize the impact of thermal deformation on processing results and ensure processing accuracy and product quality. We are committed to providing customized solutions to meet our customers' high-precision requirements in laser cutting and CNC machining processes. Through our solutions, customers can improve production efficiency and reduce scrap and rework rates, thereby improving competitiveness and profitability.

Practical case application



高效化快速交付解决方案 Efficient and rapid delivery solutions

04

该方案适用于想要缩短产品交付周期，快速响应市场需求，满足紧迫的项目要求等各类行业客户。

This solution is suitable for customers in various industries who want to shorten product delivery cycles, respond quickly to market demands, and meet urgent project requirements.

■ 缩短交付周期，满足紧迫需求

Shorten delivery cycle and meet urgent needs

我们提供快速交付解决方案，旨在帮助客户缩短产品交付周期，满足紧迫的市场需求。通过采用智慧超矫技术相关设备配置和高效的工艺流程，凭借玛哈特智能制造中心的自动化产线，我们能够快速响应客户的需求，加快设备生产速度，使产品能够尽早送达客户。

We provide fast delivery solutions designed to help customers shorten product delivery cycles and meet pressing market needs. By adopting the equipment configuration and efficient process related to smart super-correction technology, and relying on the automated production line of MAHATMA Intelligent Manufacturing Center, we can quickly respond to customer needs, speed up equipment production, and enable products to be delivered to customers as early as possible.

■ 优化流程和资源调配

Optimize processes and resource allocation

我们有自动化的生产流程和产业链资源调配能力，为实现给客户快速交付，通过分析生产流程中的瓶颈点和优化生产计划，我们能够合理配置资源，提高生产效率，有序推进项目，将产品尽快交付给客户。

We have automated production processes and industrial chain resource allocation capabilities. In order to achieve rapid delivery to customers, by analyzing bottlenecks in the production process and optimizing production plans, we can rationally allocate resources, improve production efficiency, advance projects in an orderly manner, and deliver products Deliver to customers as quickly as possible.

客户需求解决方案与案例

Solutions and cases for customer needs



客户需求

1、用于ipone15生产需求，从传统的不锈钢治夹具更改为钛合金，因钛合金强度高，记忆性强导致生产过程中产品变形大达不到生产需求，客户设计预留平面度偏差0.05mm。

1. For the production needs of ipone15, the traditional stainless steel fixture is changed to titanium alloy. Due to the high strength and strong memory of titanium alloy, the product deforms greatly during the production process. If the production requirements are not met, the customer's design reserves a flatness deviation of 0.05mm.

项目成果

- 1、解决了平面度超差难题，合格率提升99.9%；
- 2、为ipone15量产提供了中国智慧；
- 3、解决了钛合金校平难题，颠覆传统退火压校平，校平效率低、时间长、成本高等问题。

- 1. Solved the problem of out-of-tolerance flatness and increased the pass rate to 99.9%;
- 2. Provide Chinese wisdom for the mass production of iPhone 15;
- 3. It solves the problem of titanium alloy leveling and subverts the problems of traditional annealing and pressure leveling, such as low leveling efficiency, long time and high cost.



客户需求

- 1、需宽厚板高精度矫平工艺；
- 2、配合车间其他设备完成自动化生产任务。

- 1. High-precision leveling process for wide and thick plates is required;
- 2. Cooperate with other equipment in the workshop to complete automated production tasks.

项目成果

- 1、实现一站式加工方式:解决了宽厚度板，矫平加工难点，配合自动化生产，实现了一站式加工方式；
- 2、提升了产品品质：领先于同行，玛哈特携手中联重科致力于打造民族品牌。

- 1. Achieve one-stop processing method: solve the difficulty of flattening and processing of wide-thickness plates, and cooperate with automated production to realize one-stop processing method;
- 2. Improved product quality: Ahead of its peers, Mahat and Zoomlion are committed to building a national brand.



客户需求解决方案与案例

Solutions and cases for customer needs

扬力集团
Yangli Group

客户需求

Customer Needs

1、对毛坯板料进行矫平处理，平面度达不到要求，从而使后续生产加工费时费力，质量达不到标准；

1. The blank sheet is leveled, and the flatness does not meet the requirements, which makes subsequent production and processing time-consuming and laborious, and the quality does not meet the standard;

项目成果

project outcome

1.从毛坯板料矫平到高精平面度。让后续生产加工达到效率与质量的提升。
2.突破行业难题。做行业的标杆。

1. Leveling from blank sheet to high-precision flatness. Improve the efficiency and quality of subsequent production and processing.
2. Break through industry problems. Be a benchmark in the industry.



中航工业

Avic (Aviation Industry of China)

客户需求

Customer Needs

1、解决C919国产大飞机工件国产化平面度难题；
2、军工某超大机型热处理蒙皮一体成型、精度赶超欧美。

1. Solve the problem of localized flatness of C919 domestic large aircraft workpieces;
2. The heat-treated skin of a very large model in the military industry is integrally formed, and its accuracy surpasses that of Europe and the United States.

项目成果

project outcome

1、解决了国产化平面度难题；
2、提升了产品品质：为中国航空相关生产设备国产化提供了奠定基础。

1. Solved the problem of localized flatness;
2. Improved product quality: laid a foundation for the localization of China's aviation-related production equipment.



客户需求解决方案与案例

Solutions and cases for customer needs

金川集团
Jinchuan Group

■ 客户需求

Customer Needs

- 1、电解铜主要生产工具：不锈钢电解板再次重复利用；
- 2、保证电解铜箔厚度一致性。

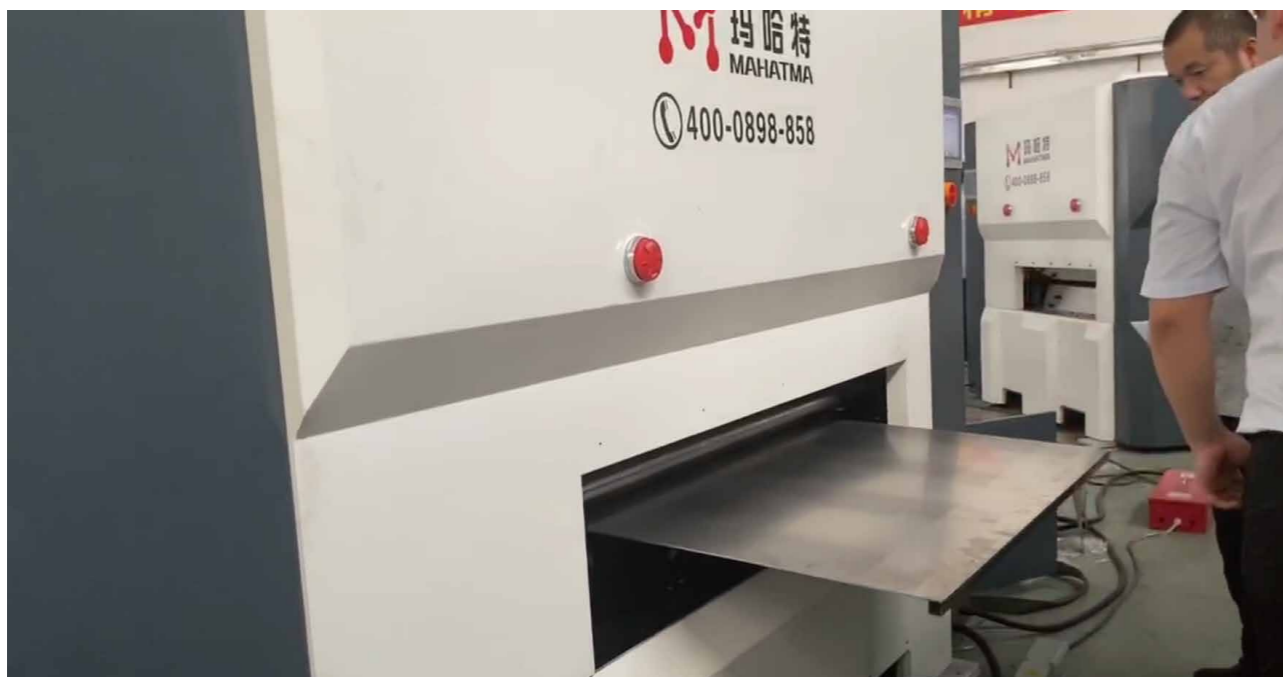
1. The main production tools of electrolytic copper: stainless steel electrolytic plates are reused;
2. Ensure the thickness consistency of electrolytic copper foil.

■ 项目成果

project outcome

1. 不锈钢电解板重复利用十次以上；
2. 近年来，我国电解铜箔产业降本增效取得显著进展，为行业发展注入了新动力。

1. Stainless steel electrolytic plates can be reused more than ten times;
2. In recent years, my country's electrolytic copper foil industry has made significant progress in reducing costs and increasing efficiency, injecting new impetus into the development of the industry.



中兴
ZTE

■ 客户需求

Customer Needs

主要生产数据机柜，一直追求高端钣金制造，制造出的机柜和钣金冲压和激光受热变形，平面度和柜体易产生变形，无法满足市场需求！

It mainly produces data cabinets and has been pursuing high-end sheet metal manufacturing. The cabinets and sheet metal stamping and laser heat deformation produced by it have poor flatness and cabinet bodies that are prone to deformation and cannot meet market demand!

■ 项目成果

project outcome

- 1、全面解决钣金品质问题，提升产品质量和美观度！
- 2、通过矫平之后冲孔板应力去除，折弯后不产生反弹，反弹率不超过2mm以内！

1. Comprehensively solve sheet metal quality problems and improve product quality and aesthetics!
2. After leveling, the stress of the punched plate is removed, and there is no rebound after bending, and the rebound rate does not exceed 2mm!



客户需求解决方案与案例

Solutions and cases for customer needs

铸成集团
Zhucheng Group

客户需求

Customer Needs

- 1、无人化生产:全自动化生产产线，从卷料原材料经过数道工序直接成型；
- 2、高精度平整度需求:解决传统加工方式，不平整问题。

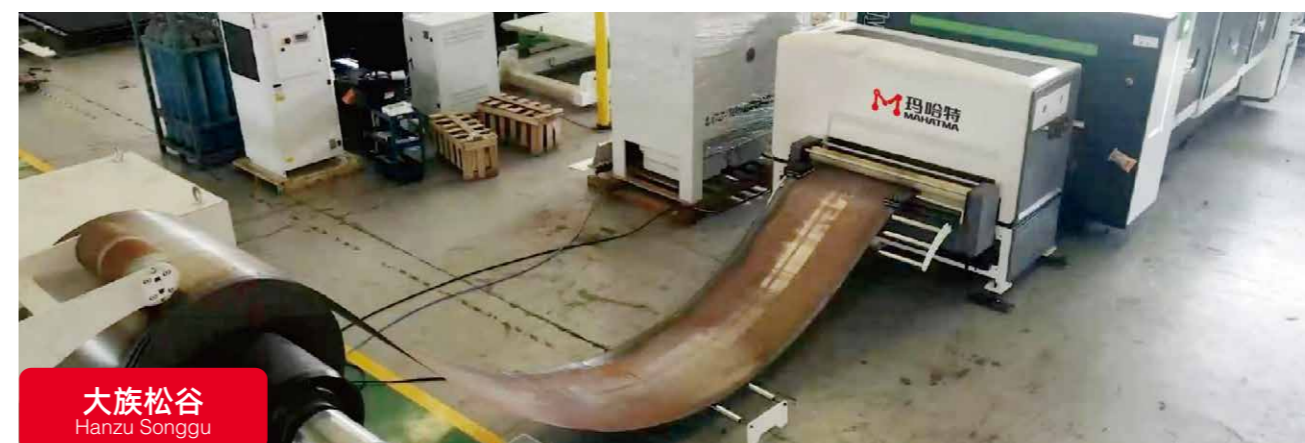
- 1.Unmanned production: fully automated production line, directly formed from coiled raw materials through several processes;
- 2.High-precision flatness requirements: solve the problem of unevenness in traditional processing methods.

项目成果

project outcome

- 1、生产效率极大提升:从原来的单机设备，升级成一整套自动化设备（高精度矫平送料线配套百迪激光切割机），提升了生产效率；
- 2、品质行业标杆水准：通过自动化产线加工的产品精度高，标准化程度高；
- 3、产品多样性强：可任意生产客户各式各样的材料尺寸，得到了众多终端客户的认可。

1. Production efficiency has been greatly improved: the original single-machine equipment has been upgraded to a complete set of automated equipment(high-precision leveling and feeding line equipped with Baidi laser cutting machine), which has improved production efficiency;
- 2.Quality industry benchmark level:Products processed through automated production lines have high precision and high degree of standardization;
- 3.Strong product diversity:It can produce customers' various material sizes at will, and has been recognized by many end customers.



客户需求

Customer Needs

- 1、产品高精度送料矫平；
- 2、配合其激光切割机，形成一套完整生产线。

- 1.Product high precision feeding and leveling;
- 2.Together with its laser cutting machine, it forms a complete production line.

项目成果

project outcome

- 1、提升产品推广：出口印度，产品品质得到终端客户认可，并提升了外贸市场新产品的推广；
- 2、实现产品自动化生产：全程与大族松谷共同开发连线，最终实现了产品自动化生产过程。

- 1.Improve product promotion:Exported to India, product quality has been recognized by end customers and promoted the promotion of new products in the foreign trade market.
- 2.Realize automated production of products:We jointly developed the connection with Han's Songgu throughout the entire process, and finally realized the automated production process of the product.

行业应用

Industry applications



航空航天
aerospace



建筑行业
Construction industry



医疗技术行业
Medical technology industry



风能
Wind energy



储能
Stored energy



锂电行业
Lithium battery industry



交通运输
Transportation



5G通讯
5G communication



电力电气
Electric power



光伏行业
Photovoltaic industry



环保行业
Environmental protection industry



锯片行业
Saw blade industry



激光切割
Laser cutting



汽摩配件
Auto and motorcycle parts



机箱机柜
Chassis cabinet



重工制造
Heavy manufacturing



金属新材料行业
Metal new material industry



机加工自动化行业
Machining automation industry



纺织机械
Textile machinery



金属加工
Metal working



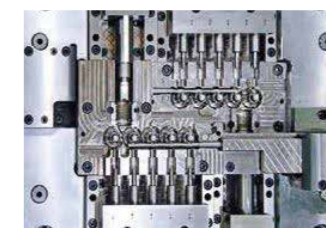
天花幕墙
Ceiling curtain wall



超平铝板行业
Super flat aluminum plate industry



高强度钢板行业
High strength steel plate industry



精密治夹具
Precision fixture

全球合作伙伴

Global partner

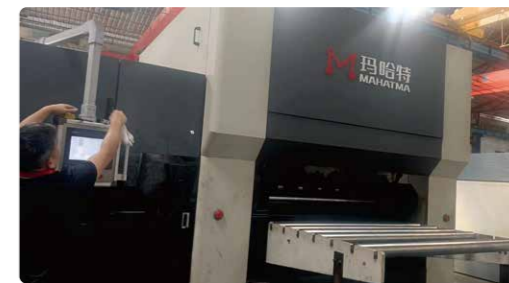
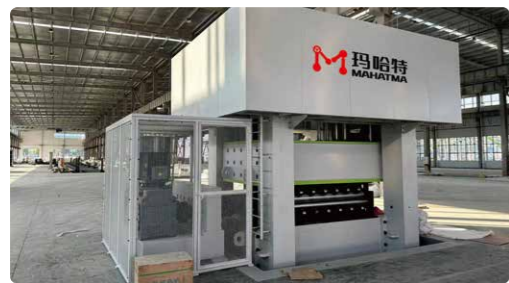
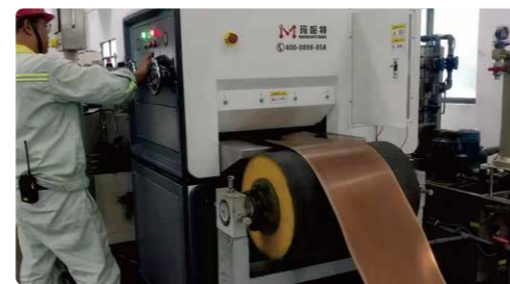
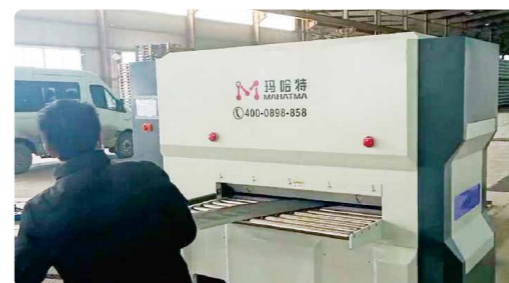
我们与国内龙头企业大族激光、华工等企业还签订了战略合作伙伴关系，并与比亚迪、大疆、中联重科、华为、国家电网有限公司、富士康、中国第一汽车集团有限公司、中国兵器工业集团有限公司、中国铝业集团有限公司、江西铜业集团有限公司、中国电子科技集团有限公司、美的集团股份有限公司、金川集团股份有限公司、宁德时代新能源科技股份有限公司、江苏沙钢集团有限公司、紫金矿业集团股份有限公司、中国核工业集团有限公司、上海电气控股集团有限公司、中兴通讯股份有限公司、三一重工股份有限公司、柳州钢铁股份有限公司、安徽建工集团股份有限公司、中国航空工业集团有限公司等国内500强大型集团形成了长期稳定的合作关系，为客户提供高品质的国产化尖端产品，推动国内智能制造产业升级长久稳定的发展。

We have also signed strategic partnerships with domestic leading enterprises such as Dazhu Laser and HGTECH. And with BYD, DJI, Zoomlion, Huawei, State Grid Co., LTD., Foxconn, China First Automobile Group Co., LTD., China North Industries Group Co., LTD., Aluminum Corporation of China, Jiangxi Copper Group Co., LTD., China Electronics Technology Group Co., LTD., Midea Group Co., LTD., Jinchuan Group Co., LTD., Ningde Times New Energy Technology Co., LTD., Jiangsu Shagang Group Co., LTD., Zijin Mining Group Co., LTD., China National Nuclear Corporation Co., LTD., Shanghai Electric Holding Group Co., LTD., ZTE Corp., Sany Heavy Industry Co., LTD., Liuzhou Iron and Steel Co., LTD., Anhui Construction Engineering Group Co., LTD., Aviation Industry Corporation of China The top 00 large group has formed a long-term and stable cooperative relationship, providing customers with high-quality domestic cutting-edge products, and promoting the long-term and stable development of domestic intelligent manufacturing industry upgrading.



客户应用场景

Customer application scenario



展望未来

Looking forward to the future

开启国际征程，引领智慧超矫
承载时代使命，共创民族品牌

Start the international journey and lead the intelligent super correction
Carrying the mission of the times and creating a national brand